

**ST JOHN'S VILLAGE
BUILDING BY BUILDING**

Volume 2 of 2

by

Trevor R Howard

© 2025

Contents

INTRODUCTION.....	1
HERMITAGE ROAD.....	2
NORTH & EAST SIDE.....	2
BARRACK PATH.....	19
WEST SIDE.....	20
EAST SIDE.....	27
ROBIN HOOD ROAD	37
WEST SIDE.....	37
EAST SIDE.....	44
COPSE ROAD (LEFT).....	56
COPSE ROAD (RIGHT)	61
ST JOHN'S LYE.....	68
WARWICK LANE (EAST SIDE)	100
WARWICK LANE (WEST SIDE)	106
ST JOHN'S RESIDENTS PHOTO GALLERY	109
ACKNOWLEDGEMENTS.....	132
BIBLIOGRAPHY	133
INDEX to Volume 2	134

Table of Figures

Figure 1. Hermitage Road North side from 1967 OS map.....	2
Figure 2. St John’s Bakery, c1910.....	2
Figure 3. The Misses Mills dressmakers, c1925	3
Figure 4. Mills Garage	4
Figure 5. Millie Mills aged 15, 1913	4
Figure 6. Wooden Spoon restaurant, 1966.....	5
Figure 7. Fired Frog.....	6
Figure 8. Bright Dental Surgery.....	6
Figure 9. Not Just Kitchens 2012	6
Figure 10. Lotus take-away	6
Figure 11. Ring-a-Roses & Farmhouse Pizza.....	6
Figure 12. Graphic House 1986.....	7
Figure 13. Coinwash, 1966.....	7
Figure 14. 1-2 Graphic House, 2022.....	8
Figure 15. Italian Inspiration advertisement	8
Figure 16. Graphic House, 2022.....	9
Figure 17. Kilnbridge House	10
Figure 18. Clovelly, 2023.....	10
Figure 19. The Jungle, 2023.....	11
Figure 20. St John’s Cottage, 2023.....	13
Figure 21. School, now Cranstock Day Centre, 2021	13
Figure 22. Walker’s Cottages, 2023	14
Figure 23. Kingfield Cottages, 2023	15
Figure 24. 1-2 Wood’s Terrace, 2023	16
Figure 25. Oak Cottage, 2023.....	17
Figure 26. 2020 map overlaid on 1970s map	18
Figure 27. Barrack Path c1920.....	19
Figure 28. Barrack Path from 1967 OS map	20

Figure 29. Surrey Advertiser 18 September 1875	20
Figure 30. Norfolk Gardens, 2022	21
Figure 31. Bullivant House, 2022.....	22
Figure 32. Nyasa and the Crows Nest, 2022	23
Figure 33. Tynningham, 2022	24
Figure 34. School building, 2022.....	24
Figure 35. 1 & 2 Norley Villas, 2022.....	26
Figure 36. 3 & 4 Norley Villas, 2022.....	26
Figure 37. Woodside	27
Figure 38. Brackendale, 2022	27
Figure 39. 1954 site plan	28
Figure 40. Thirlmere & Avondale, 2022	28
Figure 41. Lynton & Caswell, 2022	29
Figure 42. The Bungalow, 2022.....	29
Figure 43. Site of The Pines, 2022	30
Figure 44. Pen & ink drawing of Salter's Cottages, 1970s	31
Figure 45. Advertisement, 1906	32
Figure 46. <i>Surrey Advertiser</i> , 9 July 1927	32
Figure 47. Glynne, 2022	34
Figure 48. Shaldon House, Tsavo, The Chinnocks, Kersbrook, Aquarius, Arlington, 2022	35
Figure 49. From 1967 OS map	37
Figure 50. Daphne Cottage & St John's Garage.....	37
Figure 51. Daphne Cottage, 2022.....	39
Figure 52. Tithe map 1840.....	39
Figure 53. 1870 OS Map	39
Figure 54. <i>Surrey Advertiser</i> 4 Nov 1916	40
Figure 55. <i>Surrey Advertiser</i> 26 Mar 1921	40
Figure 56. <i>West Sussex Gazette</i> 14 April 1921.....	40
Figure 57. Surrey Advertiser 5 July 1916.....	41

Figure 58. Hill Cottages.....	44
Figure 59. From 1967 OS map	44
Figure 60. St John's Green, c1908	45
Figure 61. Cooper's Boat House.....	45
Figure 62. Uncle Tom's Cabin and Cooper's Boat House	46
Figure 63. Methven's store	46
Figure 64. Advertisement, <i>Surrey Advertiser</i> February 1970	46
Figure 65. MERITyre, 2008	47
Figure 66. 3 Martyr's Cottages, c1907	48
Figure 67. Plot of land purchased in 1862	49
Figure 68. Advertisement, September 1864	50
Figure 69. <i>Prince of Wales</i> c1940	51
Figure 70. The <i>Prince of Wales</i> being demolished	51
Figure 71. No.s 18-20, 2022	52
Figure 72. Ravenswood and Lynthorpe, 2022	53
Figure 73. Glenvalley and Malvern, 2012.....	54
Figure 74. The Bungalow, 2012.....	55
Figure 75. Nursery shown on 1916 OS map	55
Figure 76. Post-war bungalows, 2022.....	56
Figure 77. Copse Road from 1967 OS map	56
Figure 78. Drawing of Young's store.....	57
Figure 79. 1955 telephone directory	59
Figure 80. Mervyn Instruments c1957.....	59
Figure 81. Autocar advertisement 1964	59
Figure 82. Gulton Industries rechargeable lighter	59
Figure 83. Butt's Cottages, 2023	60
Figure 84. May 1934 advertisement for Daily Express Television kit	63
Figure 85. 1954 site plan showing the two factories.....	64
Figure 86. Frontage in 1952	64
Figure 87. Frontage in 1954 plans.....	65

Figure 88. Site of new clubhouse.....	65
Figure 89. West elevation	65
Figure 90. Front elevation	66
Figure 91. Extract from 1951 plans.....	66
Figure 92. The Lye – Laws and byelaws	68
Figure 93. From 1967 OS map	70
Figure 94. The Clock House and The Chestnuts, 1997	70
Figure 95. The forge	71
Figure 96. Lye End Nursery letterhead	72
Figure 97. Le Chalet, 1960s	72
Figure 98. The Old Hayloft, 2022	73
Figure 99. <i>Surrey Advertiser</i> 2 December 1939.....	74
Figure 100. Marton and Gorsewood Cottage 1960s.....	76
Figure 101. Marton and Gorsewood Cottage 2022	77
Figure 102. Public conveniences, 2022.....	77
Figure 103. Carolyn Close, 1960s.....	78
Figure 104. Part of 1954 plans	78
Figure 105. Part of 1967 OS plan	78
Figure 106. Charles Redway’s plaque	80
Figure 107. Lye End & Lye Cottages from 1967 OS map.....	80
Figure 108. Redway Cottages, 1960s.....	82
Figure 109. Lye End Cottage	83
Figure 110. Nursery Cottages 2022	84
Figure 111. Ink drawing of the <i>Fisherman’s Retreat</i> , (c.1900?).....	85
Figure 112. Lye End House, 2016	87
Figure 113. <i>West Surrey Times</i> 22 March 1884.....	87
Figure 114. Modern map showing 2-5 Railway Cottages	88
Figure 115. 2-3 Railway Cottages 2023	89
Figure 116. 4-5 Railway Cottages 2023	90
Figure 117. From 1967 OS map	90

Figure 118. From 1917 street directory	90
Figure 119. Lye View Cottages, 2023	91
Figure 120. Hampton Cottages, 2023	93
Figure 121. Poppy Cottage, 2025.....	94
Figure 122. Heathview, 2023.....	95
Figure 123. Holly Cottage (left) and Linden Cottage, 2022.....	96
Figure 124. Holly Cottage, 1950s?.....	96
Figure 125. M.E.C. Ltd advertisement 1963.....	97
Figure 126. Woking Print, 2022.....	98
Figure 127. Edward Bottom's shop, 1968	98
Figure 128. 1-2 Lye, 2019	99
Figure 129. Warwick Lane from 1967 OS map.....	100
Figure 130. Little Ellingham	100
Figure 131. Sunnyside	101
Figure 132. Lye Cottage.....	102
Figure 133. Fern Cottage & May Cottage, 2023.....	103
Figure 134. Thorne Cottages 2023.....	104
Figure 135. Warwick Lodge 2023.....	105
Figure 136. 3 and 4 Church View Cottages 2023	106
Figure 137. <i>West Middlesex Herald</i> 22 July 1893	107
Figure 138. 1 and 2 Church View Cottages 2023	107
Figure 139. Warwick Lodge 2023.....	108

INTRODUCTION

This is the second volume of two, of a history of the village of St John's in the Borough of Woking, Surrey.

This volume continues directly on from the first volume, covering the north and east side of Hermitage Road, Barrack Path, Robin Hood Road, Copse Road and St John's Lye.

HERMITAGE ROAD

NORTH & EAST SIDE



Figure 1. Hermitage Road North side from 1967 OS map

No. 1 – St John's Bakery

No. 1 Hermitage Road was built as one of a pair of semi-detached houses along with Albany House. It is likely that the name Albany House originally applied to both tenements.

George Wanstall was a baker from Kent. When the Woking Invalid Prison opened at Knaphill in 1859, George became the resident baker. In the mid-1870s, George set up his own business, called St John's Bakery, and started trading from the newly-built Albany House, by Kiln Bridge.

From 1882 until 1895, the two houses are recorded as being owned by Mrs Harriot Bean, widow of George Bean, late of Normandy Park, Worplesdon.¹



Figure 2. St John's Bakery, c1910

George Wanstall died in 1890 and the bakery was taken over by Henry Tyler. In 1922, Henry Tyler retired and the bakery was taken over by his stepson, Thomas Veness – the son of his wife, Sarah, by her first husband.

It was demolished in the mid-1960s to allow for the building of Graphic House - the current parade of shops.

Occupants of St John's Bakery	
1877-1886	George Holton Wanstall, baker
1898	William Underwood jun.r
1891	<i>vacant</i>
1894-1922	Henry Tyler, baker & confectioner
1922-33	Thomas George Veness, baker & confectioner

¹ SHC, CC802/23/4, Surrey Electoral Registers 1832-1962

1937-39	<i>vacant ?</i>
1954	Ernest W Smith
1956	Michael A Bland
1963	G E Clements, turf accountant

No. 3 – Albany House

Albany House was built as one of a pair of semi-detached houses along with No. 1, St John's Bakery. It is likely however that the name Albany House originally applied to both tenements.



Figure 3. The Misses Mills dressmakers, c1925

Albany House was demolished in the mid-1960s to allow for the building of Graphic House - the current parade of shops.

Occupants of Albany House	
1881-88	John Player, grocer
1888-91	<i>vacant</i>
1895	Henry Mayer
1897-1907	James Ansell, furniture & carpets
1915	<i>vacant</i>
1916-21	Henry Gowler
1923-24	The Misses Mills, dressmakers
1928	Frank William Mills
1933-39	Jackson's Cold Meat Stores
1947-56	Albany Café (Arthur F Mephram)
1963	<i>vacant</i>

No. 5

In 1925, Frank Mills (see panel below) moved his garage, from next to Daphne House in Robin Hood Road, to Hermitage Road.



Figure 4. Mills Garage

Frank William Mills

Frank William Mills was born in Worcestershire in 1869. He trained as a motor mechanic and, in 1892, married Amelia Jennings in Stoke D'Abernon, Surrey. After 20 years of moving around the country, they and their seven surviving children arrived in Woking in late 1911. They lived in Daphne House at the junction of Barrack Path and Robin Hood Road.

Next to the house, Frank established St John's Garage and bus station. In 1912, Frank Mills started the first motorised bus service in Woking, running between St John's, Knaphill and Woking; aged just 15, Frank's daughter, Millie, became probably the first conductress in the country.

Frank Mills was very much an entrepreneur. In the 1920s, the garage moved into Hermitage Road, next to Albany House. The family moved into Albany House and, in 1923, the ground floor opened as 'The Misses Mills', dressmakers. The bus depot moved to the top of Hermitage Road (where Wickes now is).

Frank was one-time proprietor of the confectionery and tobacconist shop, across the road at No. 4 Hermitage Road and he also had a boat house near kiln bridge from which he would rent out half a dozen rowing boats.²

Frank Mills was, in 1920, also proprietor of St John's Poultry Farm, located on the left of Hermitage Road, towards the Crematorium.

Frank William Mills died on 4th December 1939 and was buried in St John's churchyard.



Figure 5. Millie Mills aged 15, 1913

² SHC, 10221/1, *Reminiscences of St Johns, Woking, 1912-1998*, by Doris Green (née Mills)

In the 1930s, the garage was taken over by Albert Harry James Cook. During the Second World War, Albert Cook moved his business into Goldsworth Road.

After the war, the premises became home to the Maybury Spray Painting and Cellulosing Company. The business closed in 1964/5 and the building was demolished for the development of Graphic House (below).

Occupants of No. 5	
1925-33	Mills Garage (Frank William Mills)
1936-42	Cook's Garage
1947-64	Maybury Spray Painting & Cellulosing Co.

Graphic House

Graphic House was a parade of seven retail units, built in about 1965/6; in the 1968 *Regency Directory of Woking*, they are listed as 'new shops' and numbered 1-7 in the opposite direction to the current numbering i.e. No. 1 furthest from Kiln Bridge and No. 7 nearest to it).



Figure 6. Wooden Spoon restaurant, 1966

6 & 7 Graphic House were, from the start, a double unit (now 1 Hermitage Road). The first occupant was the Wooden Spoon restaurant.

Occupants of 5-7 Graphic House (now No.s 1 & 3 Hermitage Road)		
1967	<i>vacant</i>	Wooden Spoon, restaurant
1968-69		
1972	Craven & Rylance	
1973	K A Rylance, land surveyors	National Graphical Association (Wey Valley Branch)

1974		Garage Property Management
1975-83		
1984-87		Keelan-Westall, estate agents
1990		Cornerstone, estate agents
1992-2015	Not Just Kitchen Ideas, kitchens & bathrooms	
2018	NJK Interiors	
2021-	Fired Frog	Bright Dental Surgery



Figure 7. Fired Frog



Figure 8. Bright Dental Surgery



Figure 9. Not Just Kitchens 2012



Figure 10. Lotus take-away



Figure 11. Ring-a-Roses & Farmhouse Pizza



Figure 12. Graphic House 1986
Decoretta (behind Van), Children's Thrift Shop (right)

Occupants of 3 & 4 Graphic House (now No.s 5 & 7 Hermitage Road)		
1967-69	<i>vacant</i>	E Tomlin, confectioner & tobacconist
1970-81	Decoretta, wallpaper & paints	The Children’s Thrift Shop
1983	Moto-Bitz	
1990	Ring-a-Roses, florist	
2008		Lotus
2012-		Farmhouse Pizza



Figure 13. Coinwash, 1966



Figure 14. 1-2 Graphic House, 2022



Figure 15. Italian Inspiration advertisement

Occupants of 1 & 2 Graphic House (now No.s 9 & 11 Hermitage Road)		
1966	Coinwash & Dryclean	
1967		P C Ranger
1976		Madoca Furniture
1977-81		P Emberson, prints & framing
1982-83		Suntana
1984-86		
1987-2007		Italian Inspiration, hair & beauty salon
2008-	Laundrette	



Figure 16. Graphic House, 2022

No.s 7 & 9 – Welman's Villas

No.s 7 & 9 Hermitage Road were built in about 1870. They do not appear on the 1870 OS plan but are recorded in the 1871 census. Originally they were named Burgoyne Villa and Burgoyne Cottage³.

From 1882 until 1891, the two houses are recorded as being owned by Mrs Harriot Bean, widow of George Bean, late of Normandy Park, Worplesdon.⁴ Harriot married Joseph Welman in about 1893 and, after her death in 1896, they became known as Welman's Villas.

Welman's Villas were demolished in the 1960s to make way for the building of Graphic House and were replaced in the mid-1970s by Kilnbridge House, a block of six flats.

Occupants of Welman's Villas		
1 Welman's Villas / No. 9		2 Welman's Villas / No. 7
1871	William Stacey	Ebenezer Smith
1872-80		
1881		
1882	G R Waters	Frederick Holman
1885	Mrs Mackay	
1888	<i>vacant</i>	
1891	William Smithers	William Renshaw
1895	Thomas C Ludg??	Henry Dayly
1896-97	? Dawson	
1899	Robert Parker	Thomas Parker
1904-08	George T W Lay	John Church
1905-13		Mrs Jennie Thomas
1915-20	Arthur Daborn	

³ TNA, Class: RG10; Piece: 807; Folio: 97, 1871 England Census

⁴ SHC, CC802/23/4, Surrey Electoral Registers 1832-1962

1925-38		Mrs Maud A Lay
1945-50		
1953-56	Katherine N Woods	Urban Jones
1957	Denis Laney	



Figure 17. Kilnbridge House

No. 11 – Clovelly

Clovelly is a detached house, built in about 1933. From new, until 1981, it was occupied by Douglas Charles Green.



Figure 18. Clovelly, 2023

No. 13 – The Jungle

The Jungle is a detached house, built in about 1935.

Occupants of The Jungle	
1936-46	Augustus Raymond Woods
1951-56	PC John W Green
1963	<i>vacant</i>
1967-81	Kenneth Halls



Figure 19. The Jungle, 2023

No. 15 – Abbotsleigh

Abbotsleigh was a detached house, built in about 1888. Arthur Johnson, who ran the post office and grocery shop by St John's Lye (see Vol 1) bought a plot of land in Hermitage Road, in about 1885. On this, by 1888 he had built Abbotsleigh. Arthur lived in the house until 1890, after which he rented it out. The first tenant, recorded in the 1891 census, was Alice Haygarth, widow.

Abbotsleigh was demolished (in about 1980?) and replaced by the current building.

Occupants of Abbotsleigh	
1888-90	Arthur Johnson, late grocer & sub-postmaster
1891-92	Alice Haygarth, widow
1893-95	Thomas Stent, agricultural labourer
1896-97	William Mortimer, insurance clerk
1900	J Holloway
1902-07	Henry Moulding, butcher's agent
1908	Philip Hills
1909-13	Frederick Thomas Boakes, coachman
1913-19	George Selsby, photographer

1919-21	William Swallow, school teacher
1922-27	Henry Kiely
1927-29	William Stokes
1931-33	Arthur Beminster
1935-36	William Thomas Lody
1939-46	John R Drew
1947-68	Albert M Richards
1975	Richards
1977-78	Beatrice M Evans / William A Hockley

No. 17 – St John’s Cottage

St John’s Cottage was built in about 1860. It was owned from 1870 by a Scotsman, Divie Bethune, who worked as a messenger at Woking Prison from 1861 (or earlier) until 1873. Divie returned to the Isle of Skye but continued to own the cottage and rent it out until 1887.

The first known occupant was William Archibald Wall, an American landscape artist who rented the cottage from 1870 until 1874.

By 1888, the house was owned by Arthur Johnson, late grocer and sub-postmaster.

Occupants of St John’s Cottage	
1870-74	William Archibald Wall, landscape artist
1881	<i>unoccupied</i>
1887	Miss Caroline Freemantle
1888	William Dunkley
1888	Henry Astill
1889-1900	Charles Renshaw, dairyman
1902-08	Edwin Daborn, plate layer
1909-13	Philip Hills, house painter
1913-15	George William Stanley, builder’s labourer
1916-17	T Pannel
1918	Ernest William Piesse, soldier
1919-52	Ernest John Windsor, gardener
1956	Ethel Bacon
1963	J P Weston
1967-78	George J Beake



Figure 20. St John's Cottage, 2023

St John's Council School

St John's School was originally near the Church in St John's Hill Road (see Vol 1). In 1920, the expanding population of St John's meant that the school was too small to meet the requirements. A new school was opened for juniors, between Barrack Path and Hermitage Road, with the main entrance facing onto Hermitage Road. Most of the children probably accessed the school from Barrack Path however (see page 24).

The infants continued to use the original school until 1968.



Figure 21. School, now Cranstock Day Centre, 2021

No.s 19 & 21 – Walkers Cottages

Walker's Cottages are a pair of semi-detached cottages, built in the late 1870s. From 1882 until 1902⁵, they were owned by Mrs Esther Walker, widow of John Walker, late barge-owner, who had died in 1877.

Occupants of Walker's Cottages		
2 Walkers Cottages / No. 19		1 Walkers Cottages / No. 21
1880		Robert George Hall, prison warder
1881-85	George Pafford, prison warder	
1887	George Prior, police constable	
1888		Henry Gosden
1890-93		Thomas Bearman, grocer's ass.t
1895		Edward J Smithers
1897	Sydney Loader, policeman	John Smith
1899		William J Thorp
1900		
1901		Arthur James Renshaw, dairyman
1902	Joseph James Lee, gardener	
1904-5		William Bishop
1908-12		Henry Davey
1915-59		Albert James Hockley, general labourer
1963	Eric J Hockley	
1967	D C Hill	
1975	Beatrice M Evans / William A Hockley	Philip C Moody
1977-78	William A Hockley	Kevin D Dench-Layton



Figure 22. Walker's Cottages, 2023

⁵ SHC, CC802/23/4, Surrey Electoral Registers 1832-1962

No.s 23 & 25 – Kingfield Cottages

Numbers 23 and 25 Hermitage Road are a pair of semi-detached cottages, built in about 1880. From 1882 until 1902⁶, they were owned by Henry Wood, a watch and clock maker of Chobham. Originally, the two cottages were known as Kingfield Cottages but the term Wood's Terrace, which initially applied to No.s 27, 29 & 31, eventually became applied to them as well.

Occupants of Kingfield Cottages		
1 Kingfield Cottages / No. 23		2 Kingfield Cottages / No. 25
1881-82	Joseph William Bowden, prison warden	George Barnes, retired prison warden
1883-86		
1887-88	Mrs Barnett	Isaac Chowney, nursery labourer
1891-96	Elizabeth Bolton	Stephen Collier, nursery labourer
1897		Joseph Lee, general labourer
1899-1915	John Michael Weston, house painter	Mrs Jane Lee, widow
1915-22		Arthur Gregory Howard, nursery lab.r
1922-53		Arthur John Howard, gardener
1953-56	Norman James Hadley	I F Isaacs
1958-63		Roy Bowers
1967-69		
1974-78		



Figure 23. Kingfield Cottages, 2023

⁶ SHC, CC802/23/4, Surrey Electoral Registers 1832-1962

No.s 27-31 – Wood’s Terrace

Woods Terrace consists of a pair of semi-detached cottages and a third, earlier, detached cottage, formerly known as Oak Cottage. They were owned (from about 1880) by, and named after, Henry Wood, a watch and clock maker of Chobham. Oak Cottage is shown on the 1870 OS map so is earlier than that. The pair of cottages are listed in the 1881 census so would have been built between 1870 and 1880. Later references show Wood’s Terrace as also including Kingfield Cottages.

The pair of Cottages (1 & 2 Woods Terrace) have both been extended to the front and side.

Occupants of 1 & 2 Wood’s Terrace		
1881-85	David Orr	Frederick Pamphilon
1886		
1887		William Saulters
1888-95	Joseph Turner	Stephen Spooner
1897-1909	Henry Mayes	
1911-18	William James Spooner	
1933-35		
1936-70	Mrs Phyllis Phoebe Bullman	James William Arthur Goddings
1974-75	Paul G Taylor	
1977-78	Dr Paul Skeffington	



Figure 24. 1-2 Wood’s Terrace, 2023

The first known occupant of Oak Cottage was William Penny, a clerk at the nearby Woking Invalid Prison.

From before 1900 until about 1935, Oak Cottage was known as No. 3 Wood's Terrace. In 1936-39, it was renamed as Thorpe Lodge; in 1948-54, it was Romford.

Occupants of 3 Wood's Terrace (Oak Cottage)	
1868-71	William Byers Penny, clerk at prison
1881-86	William Hampton, carpenter
1887-88	Edward Farley, plumber
1889-91	George Biddle, poultry farm manager
1895	John Moir
1899-1901	Charles Redway, butcher
1904-13	Henry Lucas, carpenter & joiner
1915-16	J Playfoot
1916-17	George Roshier
1918-19	Julianna Wilson
1920-28	Arthur Cheeseman, underman L.S.W.R.
1933	Miss M Gowers
1936-39	Mrs H Cookson
1947-50	Mrs G Play foot Hinde
1956-67	William H Williams
1974	Clive R Fisher
1977	Philip J Dalby



Figure 25. Oak Cottage, 2023

The Bungalow

The Bungalow was built in about 1965. In 1967, it was listed in local directories as being vacant.

The house was demolished for Amstel Way to be built (1989) to connect Hermitage Road with Lockfield Drive. Overlaying the modern map onto the 1970s map (Figure 26) shows that The Bungalow was right where the roundabout now is.



Figure 26. 2020 map overlaid on 1970s map

Occupants of The Bungalow	
1974-75	Charles W Bennett
1877-78	Grant R Brown

BARRACK PATH

A prison, primarily for invalided male convicts, was opened on the common, two miles from Woking Station, in April 1859. Ten years later, in April 1869, the first purpose-built female convict prison in Britain, adjacent to the male invalid prison, was opened.

The male prison was closed in March 1889, as the decline in the convict population made it unnecessary to maintain a separate prison for invalids. The female prison closed in November 1895; the female prisoners were transferred to the new female prison at Aylesbury and the buildings were handed over to the War Office.



Figure 27. Barrack Path c1920
Looking from Knaphill towards St John's

In 1892, the buildings of the male prison were converted into barracks capable of accommodating two infantry battalions, and initially became the home of the 2nd Battalion, the Royal West Surrey Regiment. The barracks were named after the 1854 Battle of Inkerman, a battle during the Crimean War.

Prison Path, ran from the prison to the village of St John's. It was renamed to Barrack Path probably in about 1900⁷.

In the 1980s, it was planned to effect a bypass of St John's by constructing Amstel Way to connect Hermitage Road with Lockfield Drive. This would cross Barrack Path, dividing it in two. Originally, a subway for pedestrians and cyclists was planned but, in 1988, this was changed to a surface crossing. Amstel Way was built in 1989.

⁷ It is listed as Barrack Path in the 1900 street directory, although it still appears as Prison Path on the 1912 Ordnance Survey plan.

Occupants of Norfolk House and Barrack Cottage / Marden		
1879-80	Robert Stevens, grocer & bootmaker	
1881-82		Thomas A Ward, prison officer
1891		Mary Jackman
1898		
1900		Job Savage, bricklayers' foreman
1900-25	Mrs Fanny Ellen Stevens, living on means (property)	Frederick Savage, carpenter
1928-31		
1931-52	Cyril Mills, musician	
1953-56		
1959-69	Edward E Bottom	Denis Laney
1974-75	Malcolm L Avison	Frederick Briggs



Figure 30. Norfolk Gardens, 2022

Bullivant

Bullivant was built in about 1880. From 1881 until 1901, the house was occupied by a number of fairly short-term tenants. The first of these was Edmund Barrymore, who died in 1883 aged just 26.

In around 1904/5, the house was converted into two tenements.

Bullivant was demolished in the early 1970s and the buildings of the current Bullivant House (a block of six flats) erected.

Occupants of Bullivant	
1881-83	Edmund Allison Barrymore, classics master
1884-85	Henry William Sparke, carriage builder
1888-97	Miss Eliza Crawley, registry office for servants
1898	Mrs Alice Calloway, widow
1901	Marion Frances, matron of convalescent home
1904	<i>vacant</i>

1904-05	Revd A Harold Storrs, curate	
1908-10		George Harold Randall, carpenter
1911	James Jackman, incapacitated	
1912-13		
1914-24	Henry Daborn, nursery labourer	
1925-26		Charles Shoesmith Street
1926-27	Mrs Elizabeth Hannah Howard	
1928-30	Daborn, widow	Walter Bourne
1931	Thomas George Kelly,	
1932	bricklayers' foreman	James Arthur Elliott
1933-73	Thomas George Kelly	



Figure 31. Bullivant House, 2022

Nyaso

In 1931, a house called the Bungalow was occupied by Walter James Bulman; it had recently been built. Walter was the grandson of James Walter Bulman who built Tynningham (see below).

The Bungalow was later renamed Nyaso, in about 1950, when another house called The Bungalow was built on the opposite side of the path – see page 29).

Nyaso was demolished in about 1980 and later replaced by the two new houses called Nyasa and The Crows Nest.



Figure 32. Nyasa and the Crows Nest, 2022

Occupants of The Bungalow / Nyasa	
1931-39	Walter James Bulman, garage proprietor
1947-78	Robert W Pegg

Tynningham

A detached house was built in about 1907 – it is listed in the 1908 street directory as ‘new building’. It was probably built by Walter James Bulman, who named it ‘Tynningham’, after his wife’s birthplace in Scotland. Walter is listed as owning the house in 1911¹⁰.

Walter’s son, Walter William Bulman moved in, in about 1915 and stayed in the house for about ten years. After a couple of other short-term tenants, in 1932 it became the home of Edward Pudney and his wife. Edward died in 1944; his wife, Elizabeth, continued to live in Tynningham until her death in 1972.

Occupants of Tynningham	
1907	<i>new building</i>
1910	George William Strudwick, bricklayer
1911-12	Richard Drewitt Smith, launderer
1913	Frederick Faulkner, nursery labourer
1915-25	Walter William Bulman, family garage business
1927-28	Walter Horace Shepherd
1929	Charles Shoesmith Street
1930	Miss Charlotte Stuart Reid
1931	<i>vacant</i>
1932-44	Edward Pudney, mechanic

¹⁰ SHC, 6198/9/76, *General district rate book, parish of Woking (Oct 1911)*

1944-72	Mrs Elizabeth Mary Pudney
1974-78	Edna M McDonald



Figure 33. Tynningham, 2022

School

St John's School was originally near the Church in St John's Hill Road (see Vol 1). In 1915, the expanding population of St John's meant that the school was too small to meet the requirements. A new school was opened for juniors, between Barrack Path and Hermitage Road, with the main entrance facing onto Hermitage Road (see page 13). Most of the children probably accessed the school from Barrack Path however.



Figure 34. School building, 2022

Headmasters	
1915-17	George Bellas Savage
1921-39	Harry Orenzo Matthew Herbert
1947	William Ernest Lunn
1956	Norman Sheilds
1963-68	J Atkinson

Norley Villas

No.s 1 and 2 Norley Villas were built in about 1910, by Walter Charles Slocock, a pair of semi-detached houses; the first record of occupation of No.s 3 and 4 is in 1914, so they were likely built a couple of years later. Sometimes (presumably mistakenly) they are recorded as **Morley** Villas or **Morley** Cottages. Slocock also owned Norley Cottages near Goldsworth Bridge - it is easy to confuse these in the records.

Occupants of 1 & 2 Norley Villas		
1910-11		John Turner, waiter in military canteen
1911-12		Alfred E Slocombe, printer's manager
1913-15	George Edgar May, gardener	
1916-20		
1925	Ellen May, widow	Mrs Alice Mahoney, widow, general servant at Senior Officers' School
1928	Marjorie E May	
1933-38	Leonard John Bennett, way ganger, Southern Railway	
1939	Arthur Haskell, general labourer	Harry Ernest Hampton, general labourer
1947-51		Wilfred N Baigent
1954-67		Peter D Publicover
1974-76		Derek Pitts
1977-78	Ann Conway	
1979		
1981-83	V D Weston	

Occupants of 3 & 4 Norley Villas		
1914-15	Frederick Faulkner, nursery labourer	George A Jackson, lamplighter, gas company
1915-17	John Norton	
1918	Sgt George William Stimpson, soldier, Royal Artillery	
1919		Mrs Grace Froud Molyneux, widow
1920-22	Mrs Mary Ann ‘Molly’ Stimpson, widow	
1922-33		John E Cable, builder’s labourer (married Grace Molyneux in 1922)
1935-37	Mrs Annie Bowers, widow	

1939-51		Mrs Alice Mahoney, widow
1954	Florence H Potter	
1855-58		
1959-68	Dennis A Wells	
1969-72		
1974-78		Neil Goymer



Figure 35. 1 & 2 Norley Villas, 2022



Figure 36. 3 & 4 Norley Villas, 2022

Woodside

Woodside is a detached house which was built in about 1887¹¹, by Thomas Brooking Langman. It was originally called Norley Cottage (Langman also owned Norley Cottages near Goldsworth Bridge).

The first recorded occupant was Mrs Sarah Ellen Overmass, widow, who lived there from 1888 to 1895.

Thomas Langman died in 1903; probate on his estate was granted in June 1904. The house was purchased in about 1907, by Walter Slocock, who changed the name to Woodside.

Occupants of Woodside	
1888-95	Mrs Sarah Ellen Overmass, widow
1897	<i>vacant</i>
1899-1904	Henry Davey, gardener
1905	<i>vacant</i>
1907-09	James Morgan
1911-12	Walter Lynn, grocer's assistant
1913-17	Sydney Cooper, launderer
1918-44	William John Norton, gardener
1947-63	Francis Attwooll Pearce, shipping clerk
1968-81	Dennis A Wells

¹¹ It is not listed in the 1885 Woking rating evaluation, but is in the 1888 list



Figure 37. Woodside

EAST SIDE

Brackendale

Brackendale is a detached house, built in the late 1960s, on land previously belonging to Daphne Cottage (see page 37). It was originally called Kinrara.



Figure 38. Brackendale, 2022

Ivydene & Thirlmere

Ivydene and Thirlmere are one of two pairs of semi-detached houses, built in about 1955 by Catalpa Development Co. Ltd.

The other pair are Hillcrest and Lynton (see below)

Ivydene has since been extended and renamed as Avondale.



Figure 39. 1954 site plan



Figure 40. Thirlmere & Avondale, 2022

Hillcrest & Lynton

Hillcrest and Lynton are one of two pairs of semi-detached houses, built in about 1955 by Catalpa Development Co. Ltd.

Hillcrest has since been renamed as Caswell.

Occupants of Hillcrest and Lynton		
1963-69	C F White	J C Guersouille
1974	Peter Bayliss	Michael Brook
1978		Dennis Aylett
1981		



Figure 41. Lynton & Caswell, 2022

The Bungalow

The Bungalow was built in about 1955.

Occupants of The Bungalow	
1955-60	Joshua W Powney
1961-67	Robert J Woosley
1974-78	Colin Matthews



Figure 42. The Bungalow, 2022

The Pines

The Pines was built probably in the late 1860s. Originally called Pine Cottage, it is shown on the 1870 OS plan. The first known occupant was William Weller, a clerk (1st class) at the female convict prison which had opened in April 1869.

The Pines was demolished in the late-1960s and four new houses built in the grounds: Steteca, Majestra, Halyards and a new house called The Pines.

Occupants of The Pines	
1870-86	William Weller, clerk at female prison
1888-97	James George Grace, agent for discharged convicts
1899-1901	Percy Sherwin, poultry farmer
1904-09	Mrs Sarah Julia Attfield, widow
1913-19	Philip Hills, painter & decorator
1919-25	Mrs Isabella J Hills, widow
1928-52	John Charles Webster, iron moulder (retired)
1959-63	Victor A Lacey
1967	P Cannon



Figure 43. Site of The Pines, 2022

Halyards

Halyards is one of a pair of semi-detached houses, built in the late 1960s. The other of the pair is called The Pines (see above).

Majestra & Steteca

Majestra & Steteca are a pair of semi-detached houses, built in the late 1960s, in the grounds of The Pines.

Salter's Cottages

In the mid-1860s, the increasing population, exacerbated by the building of the Surrey County Asylum and Woking Prison, meant that there was an acute shortage of housing in the area. On 21st July 1865, Thomas Salter (proprietor of the Prince of Wales), with Henry Thomas Cowdery, purchased land alongside Prison Path, from the London Necropolis and National Mausoleum Company.¹²

¹² SHC, 3982/1, *Deed of Partition : Mrs Sarah White and Mrs E A Wratten*, 7 Sept 1893

Thomas Salter began building six houses (three semi-detached pairs of 'villa residences') along the northern side of Prison Path. Initially, known as Salter's Cottages, these were later named: The Conifers, [The] Glynne, Stanley Villa, Harold Villa, Ikaya, and Ivydene.

The first recorded occupant, in the 1871 census, was Mrs Harriet Bickley, widow, work mistress at female convict prison, who was living in No. 3, Stanley Villa. At the time of the 1881 census, two of the houses were vacant; the other four were all occupied by employees at the prisons.

After Thomas Salter's death, in 1875, the houses were put up for auction. They were described as: '... on the first floor, three good bedrooms fitted with stoves, a linen closet &c., and on the ground floor, entrance hall, large sitting room, kitchen, scullery and out offices'. All six houses were let for a gross annual rental of £90 (£15 for each). Presumably, they did not sell as the Woking rating assessment of 1892 lists the owner still as 'Thomas Salter's executors'.



Figure 44. Pen & ink drawing of Salter's Cottages, 1970s¹³

The Conifers

No. 1 Salter's Cottages, a semi-detached house, was built in the late 1860s; it was named The Conifers. The first known occupant was a Mr Smith, in 1876.

After a number of short-term tenants, the building was acquired in 1903 (along with No.2) for a recreational home for soldiers.

¹³ SHC, 6812/6-7, *Woking and environs: scrapbooks compiled by Anthony Bathurst of Guildford*

Woking Soldiers' Home

In 1901, a soldiers' home was founded as 'a place of rest and recreation for the men quartered at Inkerman Barracks'. In 1900, a piece of land had been acquired for £102. It was proposed to erect an iron building at a cost of about £300. As the institution was a charitable endeavour, the money was raised mainly from subscriptions and by the holding of concerts and fetes, such as the one in the garden of Hoe Place on 30th September 1903.¹⁴

The Home was overseen by a Management Committee including: Lady Anstruther, Miss Churchward, Miss Churchill, Miss Bowles, The Revd F J Oliphant, and Col. R Phayre.

By 1903, it had become clear that the building was inadequate; two of Salter's Cottages – No.s 1 & 2 – were acquired and work started on alterations to the buildings. The ground floor provided the soldiers with a recreation room, reading room and library, and a temperance bar.

Miss Annie Oriana Ruthven Pond was appointed as Superintendent; with her sister, Ida, she ran the Home until their retirement in 1915, when Mr & Mrs Trigg took over.

There is no mention of the Home after 1917; it is likely that it was made redundant by the provision of a recreation hut, at the barracks, by the Y.M.C.A.



Figure 45. Advertisement, 1906

From 1925 until 1933, The Conifers was occupied by George Graves and his wife, Rebecca. George was in partnership with William Yeo as landscape gardeners and The Conifers was used as the office for the business.

It then passed to Gerald Oliver Graves.

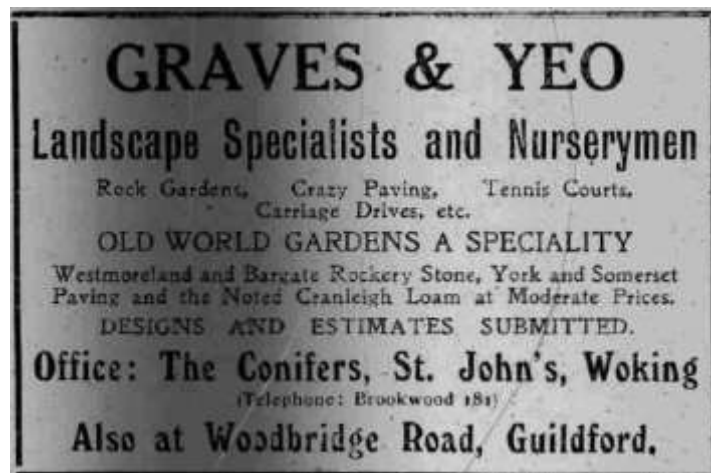


Figure 46. Surrey Advertiser, 9 July 1927

No.s 1 and 2 Salter's Cottages are the only two still standing, the others having been demolished in around 1970.

Occupants of The Conifers	
1876	Mr Smith
1881	Thomas Haydon, prison warder
1882	? Young

¹⁴ West Surrey Times 3 October 1903

1882-91	George White, photographer
1893-97	William Harris
1899-1900	George Brown
1900-01	William John Brown, gardener
1902	Harry Edwards, railway labourer
1903-15	<i>Woking Soldiers' Home</i> (Miss Annie Oriana Ruthven Pond)
1915-20	<i>Woking Soldiers' Home</i> (Mr & Mrs Trigg)
1924-30	George Graves, landscape gardener
1930-39	Gerald Oliver Graves, tailor
1946-47	Iris O Bruton
1948	Edward V B Battrick, company director
1953-55	Thomas Willis
1959	Marianne Taylor
1967-72	A J Quinlan
1973-76	P M Scobie-Trumpers
1976	P D Pezaro
1977-78	Michael V Mount
1981	J Mount

Glynne

Glynne, No. 2 Salter's Cottages, a semi-detached house with The Conifers, was built in the late 1860s. The first recorded occupant, in 1876, was a Mr Moore.

In 1903, 2 Salter's Cottages became part of the Woking Soldiers' Home (see page 31).

Occupants of Glynne		
1876	Mr Moore	
1882-83	William Clarke, prison warder	
1885	George Prior, police constable	
1887-97	Joseph Wallace, prison officer	
1899-1900	Edward Carter	
1901	Jephthah Bearman, retired postman	
1902	Walter Holden	
1903-15	<i>Woking Soldiers' Home</i> (Miss Annie Oriana Ruthven Pond)	
1915-20	<i>Woking Soldiers' Home</i> (Mr & Mrs Trigg)	
1925-29		Frank Green
1935		Henry E Henshaw
1937	P McGavin	
1939-40		Mrs Daisy K Tarrant
1941	Robert C R Cook	

1956-63		Henry Crouch
1967-78		Arthur R Laney



Figure 47. Glynne, 2022

Stanley Villa & Harold Villa

Stanley Villa and Harold Villa were one semi-detached pair of Salter's Cottages, built in the late 1860s.

Stanley Villa and Harold Villa (along with Ikaya and Ivydene) – collectively 3-6 Salter's Cottages – were demolished in the late 1960s. The current terrace of houses (Shaldon House, Tsavo, The Chinnocks, Kersbrook, Aquarius and Arlington) were built in their place.

Occupants of Stanley Villa & Harold Villa		
1871-75	Mrs Harriet Bickley, work mistress at female convict prison	
1876-85		William Weller, clerk at female prison
1888		Wallace Woolnough, solicitor's clerk
1891		Cecil Edwin Percy Bearman, tailor's cutter
1893-95		Thomas White Bearman, grocer's assistant
1897	George Rendel	Joseph Wallace, prison officer
1898-99		
1899-1901	Edward Bailey, nursery labourer	Mrs Julia Wallace, widow
1902-04	William Louis Edward Rousseau	

1905	Mrs Sarah A Gale	
1906-08		
1908	Henry Moulding, butcher	John Peel, carpenter
1909-13		Arthur Ernest Rainbow, lunatic attendant
1914		George Harold Randall, carpenter
1915		Mrs Ellen Florence Jackman
1916-17	Margaret Blellock, widow	
1918-33	William Henry Jenks, baker	
1935-59	Harry James Jackman, bricklayer	Percy James Bigwood
1963-67		



Figure 48. Shaldon House, Tsavo, The Chinnocks, Kersbrook, Aquarius, Arlington, 2022

Ikaya & Ivydene

Ikaya and Ivydene were one semi-detached pair of Salter's Cottages, built in the late 1860s. The first recorded occupants were Robert Humphries in 1874 and a Miss Rose¹⁵ in 1876.

Ikaya and Ivydene (along with Stanley Villa and Harold Villa) – collectively 3-6 Salter's Cottages – were demolished in the late 1960s. The current terrace of houses (Shaldon House, Tsavo, The Chinnocks, Kersbrook, Aquarius and Arlington) were built in their place.

Occupants of Ikaya & Ivydene		
1874-76	Robert Mansfield Humphries, prison warder	Mrs Mary Ann Rose, widow
1881-82	James Brine, scripture reader at prison	
1883-88	Mrs Sarah Ellen Overmass, widow	

¹⁵ This appears to have been Mrs Mary Ann Rose, a widow. In 1879, she remarried (George Newman of Addlestone, with whom she was living in the 1881 census). However she appears in the electoral registers and the ratings assessments as occupying The Conifers for the next seven years under her name of Rose; it is possible she was sub-letting rooms.

1891-92	Frederick Jordan, manager of newspaper	
1893		
1895-96	Simion Gray	
1897	James Blalock, builder's labourer	
1899	Henry Davey, gardener	George Biddle, manager of poultry farm ; waiter; assistant at crematorium
1901	Annie Rousseau	
1902-04	John Dawson	
1906-08	Russell Frederick Charles Bowsher, carpenter	
1910-21	Robert Blunden, gardener	
1922-33		Arthur William Armstrong, commercial traveller
1934-35		
1937-39	Wilhelmina Blunden, widow	James Churn, fitter's labourer
1940-46		
1947-51	Tom Lincoln Honour, painter	
1951-59	Mrs Kathleen Margery Honour (née Blunden), widow	Joseph C Fulcher, stevedore
1963-67		G Evans

ROBIN HOOD ROAD

That part of Robin Hood Road, from Kiln Bridge as far as the boundary wall of Inkerman Barracks on the left and up to and including Copse Road on the right.

Up to and including the 1905 street directory, Robin Hood Road was known as a continuation of St John's Road. The steep hill past the Prince of Wales public house was known as Prince Hill in the early 20th century.

WEST SIDE

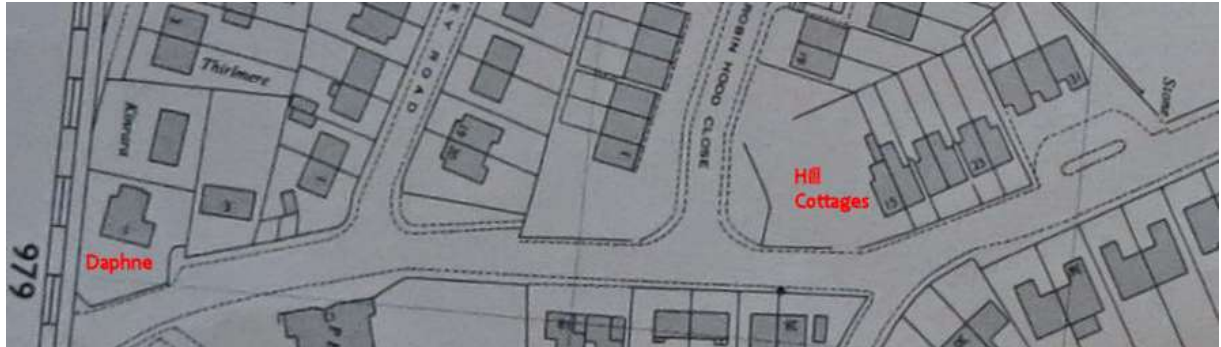


Figure 49. From 1967 OS map

No. 1 – Daphne Cottage

Daphne Cottage, then known just as 'Daphne' was built in about 1880. The first known occupant was George Waterer of Goldsworth Nursery. George married in 1877 and by the time of the 1881 census he and his wife were living in St John's, near or at the place where Daphne Cottage is. The first reference to the name Daphne was when George left in early 1898 (his household furniture was sold at auction in the February¹⁶).

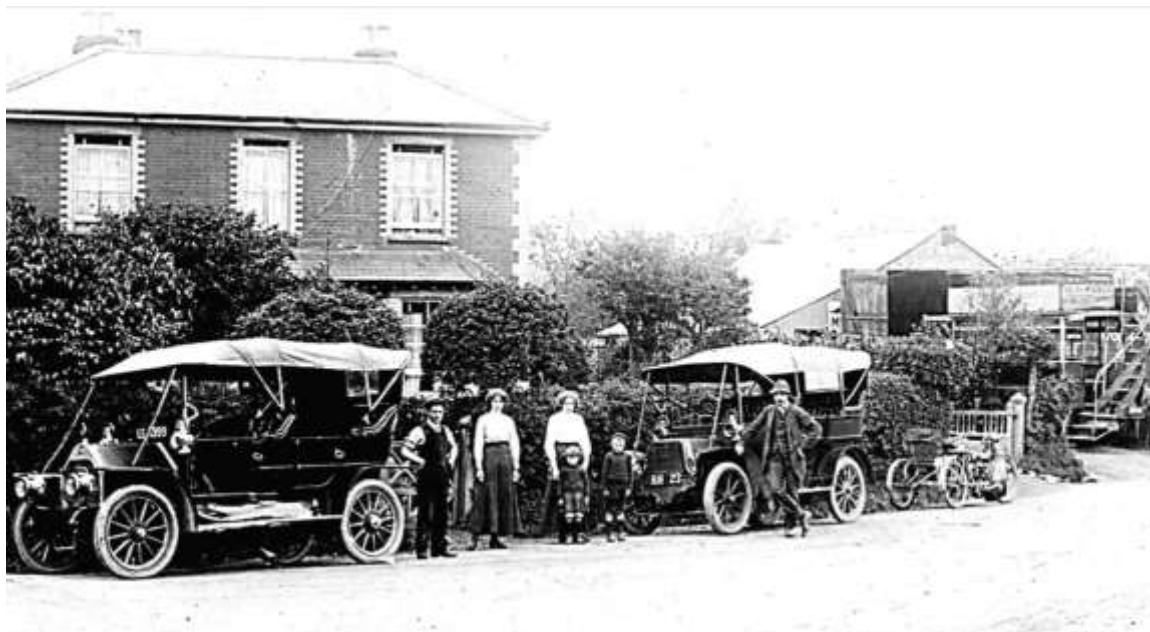


Figure 50. Daphne Cottage & St John's Garage

¹⁶ *Surrey Advertiser* 12 February 1898

Following three short-term tenants, Frank William Mills, motor engineer, and his family moved in in 1911. Alongside the house, Frank Mills established St John's Garage, from where he ran the first motorised bus service to Woking (see also page 3).

In 1922, Frank Mills left Daphne Cottage, moving his garage and bus depot to locations in Hermitage Road.

For most of the 1930s, Daphne Cottage was occupied by James and Ernestine Chadwick, retired circus performers; James had been known as 'Valdo the Clown'.

Frank Colebrook and then his daughter, Margaret, lived in Daphne Cottage for the next forty years.

In 1954, part of the land associated with Daphne Cottage was used to build two pairs of semi-detached houses facing onto Barrack Path. These were Ivydene, Thirlmere, Hillcrest and Lynton (see page 27-29).

From 1981 until 2018, Daphne Cottage was home to a succession of veterinary practices. In 1982-3 a two-storey extension was added to the rear.

The building is Locally Listed for its townscape merit and at time of writing, the house is unoccupied. In 2024, a plan was proposed for the demolition of No.1 Robin Hood Road and erection of a part three-storey, part two-storey building comprising seven self-contained flats and a ground floor commercial unit.

Occupants of Daphne Cottage	
1891-98	George Waterer, retired nurseryman
1898-1901	Edgar William Preece, cab proprietor
1902-03	William Samuel Thomas Davis, brickmaker
1907-09	Emma Bowyer
1911-23	Frank William Mills, motor engineer
1925-31	Edward Pudney, mechanic
1933-38	James Chadwick, music hall artiste ¹⁷
1938-39	Mrs Ernestine Rosa Chadwick, widow
1940-54	Frank Colebrook, printer's valuer
1955-78	Miss Marguerite Alice Muriel Colebrook, teacher
1981-88	I K Nicholls, veterinary surgeon
1990-97	David Callaghan & Ass., veterinary surgery
2008-18	Pet Doctors

¹⁷ Son of Henry 'Valdo the Clown' Chadwick



Figure 51. Daphne Cottage, 2022

No. 3 – Kiln House

Kiln House was built on an irregular oval-shaped piece of land, situated between Robin Hood Road and Barrack Path (shown as Kiln Cottage on the 1870 OS map, Figure 53). The 1840 tithe apportionment¹⁸ shows the same plot (no. 1531 in Figure 52) with an older house in the northern part of the plot. At that time the land was owned by the Earl of Onslow (Lord of the Manor of Woking) and occupied by James Dalvery.



Figure 52. Tithe map 1840



Figure 53. 1870 OS Map

¹⁸ SHC 6198/13/108, *Tithe apportionment for the parish of Woking*, December 1841

Kiln House was probably built by William Jackman, nurseryman who was living there at the time of the 1861 census. This is the only record of William residing at Kiln House; other records (e.g. electoral lists) give his abode as Foulmire (see Vol 1). From at least 1871 until 1893, the house was occupied by William's sister, Mary.

The house came up for sale in 1903, when it was described as an 'eight-roomed detached dwelling house, garden and orchard', currently occupied 'at a rental of £30 per annum'.

To Small Holders and Pig Keepers.
KILN HOUSE, ST. JOHN'S,
About two miles from Woking Station.
MESSRS. HEWETT AND LEE,
are instructed by Mr. E. Head (called
to the Colours) to Sell by Auction, on the
Premises, on
WEDNESDAY, NOV. 13th, 1916,
at two o'clock precisely, the
**STOCK AND EFFECTS OF A
SMALL HOLDER,**
comprising:
TWO COWS, 142 lbs.,
TWO FOUR-WHEEL SPRING VANS,
PONY CART, MILK FLOAT, TRICYCLE,
BICYCLE,
34 HEAD OF SWINE,
including three Breeding Sows, three York-
shire Gilt, a nine-mos. Yorkshire Boar,
eight Porkers, and 19 Fattening Pigs,
80 HEAD OF POULTRY,
pig-tubs and utensils, the erection of four
portable pig-styes, portable fowl-house, 12ft.
square, miscellaneous outdoor effects, two
sets of pony harness,
**SURPLUS HOUSEHOLD FURNITURE AND
EFFECTS.**
On view the morning of Sale. Catalogues
may be obtained on the Premises, and post
free of Messrs. Hewett and Lee, Auctioneers
and Valuers, 144, High-street, Guildford.

Figure 54. *Surrey Advertiser* 4 Nov 1916

After the First World War, throughout the 1920s, the house appears to have had multiple occupancy.

ST. JOHN'S.
CURIOUS DOMESTIC STORY.
At Woking Petty Sessions on Saturday the
Guildford Guardians applied for a mainten-
ance order against George Hodges, Kiln
House, St. John's, in respect of his two
daughters, Elizabeth (10) and Esther (7), who
had become chargeable to the common fund
of the Union.—Mr. Martin said the two girls
were at the Shirley Schools, and cost the
Guardians 19s. 3d. a week each. Defendant
was a nursery labourer earning an average
wage of £3 3s., and he had no rent to pay. He
had four other children, and was living with
another woman, while his wife was living
with another man. He refused to support the
two children.—Ordered to pay 2s. 6d. weekly
in respect of each child.

Figure 55. *Surrey Advertiser* 26 Mar 1921

WOKING.
It is estimated that some 500 families here
are sharing houses, while on a basis of two
persons per room, there are probably at least
150 cases of overcrowding. So states Woking's
Medical Officer of Health, who also records
that there are still several mud huts in oc-
cupation in the district.
"I will do six months rather than pay a
single penny," said Thos. Kingsley, of Kiln
House, St. John's, against whom Elizabeth
Carey applied for an affiliation order on Sat-
urday. Mr. Hunt, for the applicant, said
defendant and the girl had been brought up
in the same house like brother and sister, and
after a long hearing, the Bench dismissed the
application.

Figure 56. *West Sussex Gazette* 14 April
1921

Kiln House was demolished in about 1970, to allow for the building of houses on the south side of the Ashley Road development.

Occupants of Kiln House	
1840	James Dalvery
1851	David Percy, farmer
1861	William Jackman, nurseryman

1871-93	Mary Jackman, living on own means
1893-97	Albert Edward Inwood, publican
1898-1910	George Giddings, plate-layer (railway)
1911-12	William Strudwick, bricklayer
1913-15	Frank George Grainger, parcels delivery agent L.S.W.R.
1915-16	Edward Head, pig breeder, etc
1918-24	Henry Carey, general dealer
1924-25	James Roberts
1926	G Hedges, gardener
1928-51	Samuel John Smith, canal lock-keeper
1954	Clement Toynton
1956	Kenneth G Hartley
1959-63	Arthur C Trowbridge
1967	<i>vacant</i>
1974-75	Jonathen A Trowbridge
1977-78	Michael R Webb

No. 5 – Hill Villa / Hill View

Hill View was built in the late 1870s. The first occupant was George White, a photographer, who is recorded in the 1881 census. The house is recorded as 'Hill Villa' – this name appears in records into the 1890s.

In 1916, Hill View was purchased [presumably from Lionel Sandeman, the previous occupant, an accountant at the Bank of England] in order to provide for a social club for soldiers and their women friends. The driving force behind the club was the pairing of Lady Betty Balfour and Mrs Rosina Savage.

The idea quickly spread across Surrey and to other parts of the country. The clubs were called Kitchener Comrades' Clubs but known colloquially simply as 'Kitchener Clubs'.

The club in St John's was opened on Saturday 1st July 1916.

Figure 57. Surrey Advertiser
5 July 1916

**KITCHENER CLUB AT
WOKING.**
**For Soldiers and their Women
Friends.**

Named after Lord Kitchener, a social club for the joint use of soldiers and their women friends was opened at St. John's on Saturday evening. The idea arose out of the formation of a band of local women patrols by Lady Betty Balfour and others interested in the welfare of soldiers and girls in this district, and it quickly attracted warm support.

Hill View, Robin Hood-road, a large house standing in its own grounds, was secured for the purpose, and this was renovated, furnished and equipped at a cost of about £100. Another £100 is being spent on the erection of a commodious clubroom, opening out of the canteen, which will be completed by the end of this week.

The accommodation includes reading rooms, writing rooms, game rooms, etc., and the premises present a most inviting appearance. Membership is open equally to soldiers and young women, unless the latter are married, when they will only be accepted if their husbands also belong. There was a large attendance at the opening ceremony, which was performed by Lady Betty Balfour, who made a short speech, pointing out that the success of the club would very largely depend on its women members, to whose honour the committee trusted to keep it on right and noble lines, worthy of him whose name it bore.—Colonel Colson addressed a similar appeal to the men, and an enjoyable entertainment followed.

Lady Betty Balfour (1867-1942)

Betty Balfour was born Elizabeth Edith Bulwer-Lytton, in 1867, daughter to The Hon. Robert Bulwer-Lytton, poet and diplomat, and Edith Villiers, a lady-in-waiting to Queen Victoria. She became a suffragist, politician, and writer. A staunch Conservative, she served as Dame President of the Woking Habitation of the Primrose League and was a founding member of the Conservative and Unionist Women's Franchise Association, serving as president of the association's chapter in Edinburgh.

Her father was made Earl of Lytton, in 1870, and she became Lady Betty.

In 1887, Betty married Gerald Balfour, a Scottish aristocrat and Conservative MP; he was brother to the future Prime Minister Arthur Balfour. From 1901, Gerald and Betty lived at Fishers Hill, Hook Heath, Woking (where she died in 1942).

In 1919, Lady Balfour became the first woman to sit on the Woking District Council.

After the war, the premises were taken over by the St John's and District Working Men's Club (see page 59). This survived until the Second World War, when it was forced to move to temporary accommodation. The 1949-50 Woking street directory lists the club in Copse Road.

From 1951 until 1959, Hill View was occupied by Dorothy Hartley; from 1951, her brother Kenneth ran his light engineering business, K G Hartley Ltd, from the premises.

Hill View was demolished, in about 1960, for the building of the Robin Hood Close development.

Occupants of Hill View	
1881-84	George White, photographer
1888-91	Maria J Peterkin, Civil Service pensioner
1895-98	Alfred Dawson, gardener
1899-1900	William Clarke, prison warder
1900-03	William Hutton, builder
1903-04	Henry Gardiner Gribble, architect & surveyor
1904-08	William Samuel Thomas Davis, brickmaker
1912-15	Lionel Fraser Sandeman, accountant at Bank of England
1916-20	Kitchener Club
1923-39	St John's & District Working Men's Club 1921-34 Frederick V Kemp 1936-39 R Binsley
1945-47	Mrs Elizabeth Munds
1951-59	Dorothy Hartley

No.s 15-25 – Hill Cottages

Hill Cottages (originally Princes Hill Cottages) comprise three pairs of semi-detached houses. They were also known as Hutton's Villas, after William Hutton who owned the land on which they were built. 1-4 Hill Cottages were built in around 1902/3. No.s 5 & 5 followed in about 1910.

In 1911, Hill Cottages were owned by W B Styer.

Occupants of 1-2 Hill Cottages		
1903-06	Edward Hebbs, brick burner	Alfred Devonshire, brickmaker
1906	Mary A Hebbs	
1907		Alfred Gibbs
1908-09		George Bigwood
1909	Richard David Vidler	
1911	John Church	Frederick Holmes
1913-17		Mrs Ellen Baker
1918-33		Percy Collyer
1937-48		
1951-54	John Munds	James E Denyer
1956-63	Elizabeth Munds	
1967-75		
1977-78		Thomas Sandland

Occupants of 3-4 Hill Cottages		
1904-08	Alfred Dimon	James Elliot
1911-13	Arthur Daborn	
1915-28	Mrs Frances H Wilson	
1929-32		Mrs M R Elliot
1933	Mrs Denyer	
1937-54	John E W Denyer	
1956	S A Denyer	
1961-63	Thomas A Peatman	Christopher E Mills
1967	Duncan Fraser	K Maynard
1974-75		William Peacock
1977-78		David P Barnett

Occupants of 5-6 Hill Cottages		
1911-20	Herbert Dunford	Walter Sim, baker
1921-39	Frederick H Chapman	
1945-68	Ethel Chapman	
1974		
1977-78		Glen D Packer



Figure 58. Hill Cottages

EAST SIDE

At the end of the nineteenth and the beginning of the twentieth centuries, the area between the Basingstoke Canal (from Kiln Bridge) and the Prince of Wales Hotel, was known as St John's Green (roughly that area shaded green in Figure 59).



Figure 59. From 1967 OS map

In 1862 this area was occupied by the Basingstoke Canal Company Wharf and a coal pen (see Figure 67).



Figure 60. St John's Green, c1908
Martyr's Cottages in the mid-ground; the houses of Copse Road can be seen behind

Boat House

Cooper's boat house was supposedly located on the north-west bank of the Basingstoke Canal, to the north of Kiln Bridge. The only reference found to the boat house is a photograph and pencil sketch, both in a scrapbook compiled by Anthony Bathurst of Guildford in the 1970s.

There are distinct differences between the sketch and the photograph in Figure 61. The sketch suggests that the boat house was contemporary with Methven's greengrocery store (c.1920-1965). It has not been found on any map or in any street directory.



Figure 61. Cooper's Boat House

It seems likely that Cooper's Boat House was a continuation of that run by Frank Mills during the first world war:

"My father [Frank Mills] also had a boat house on the canal near Kiln Bridge and had six rowing boats. Soldiers during the First World War used to hire these boats row them up the canal to Pirbright Camp and sometimes not return them, we then had to go and get them!"

Reminiscences of Doris Green née Mills¹⁹

¹⁹ SHC, 10221/1, DVD of illustrated reminiscences of St Johns, Woking, 1912-98, by Doris Green



Figure 62. Uncle Tom's Cabin and Cooper's Boat House²⁰

Uncle Tom's Cabin

Uncle Tom's Cabin first appears on the 1912 ordnance survey plan. The Woking Directories of 1917 and 1921 describe it as a 'shaving saloon'. William James Seadon was then the manager.

By 1924, it was Prince Hill Stores, a fruiterer and greengrocer's shop, run until about 1965, by Arthur Edward Methven (Figure 63).



Figure 63. Methven's store



Figure 64. Advertisement, *Surrey Advertiser* February 1970

In the mid-1960s, the same site became home to Oliver Cox Ltd. Their newly built tyre centre opened in May 1965. Since 1972, MERITyre have operated from the building.

²⁰ SHC, 6812/6-7, *Woking and environs: scrapbooks compiled by Anthony Bathurst of Guildford*



Figure 65. MERITyre, 2008

Occupants of Uncle Tom's Cabin site	
	Canal store
1915	<i>vacant</i>
1916-21	Shaving saloon
1924-63	Prince Hill Stores (A E Methven)
1965-70	Oliver Cox Ltd, tyre dealer
1973-	MERITyre

No.s 2-8 – Martyr's Cottages

In 1840, Stephen Tilly owned and occupied a plot of land just to the north of Kiln Bridge (plot 1530 on the tithe map).²¹ This measured about $\frac{3}{4}$ acre and was adjacent to and to the east of where the Prince of Wales Hotel would be built.²²

By about 1865, the land was owned by Joseph Martyr (see Vol 1). He built Martyr's Cottages, in the 1860s. There were four, detached, single-storey dwellings (see Figure 60 and Figure 66 below). Each cottage comprised three rooms.²³

²¹ SHC 6198/13/108, *Tithe apportionment for the parish of Woking*, December 1841

²² SHC, 3935/Box9 *Conveyance London Necropolis & National Mausoleum Company to Thomas Salter 1862*

²³ Including the kitchen, but not including scullery, bathroom etc (1911 census)



Figure 66. 3 Martyr's Cottages, c1907

In 1954, when Robin Hood Road was renumbered, 1-4 Martyr's Cottages became 8, 6, 4 & 2 Robin Hood Road, respectively.

Occupants of 1 & 2 Martyr's Cottages		
1870	Edward Wanstall, carpenter	
1871		William H Weller, prison warder
1880	Alfred William Hall, assistant gasman	
1881-85		Henry Candy, farm labourer
1891-1905	James Miller, retired farmer	
1907-12		Frederick George Webb, grocer's porter
1913-15	Percy William Arthur Collyer, gardener	John Henry Jeffrey, gardener
1916-34		
1934-51	Mrs Catherine Miriam Collyer	
1952		
1954-56	Jesse C Buckland	
1958-60	Michael Jackman	Hilda H Monin
1960-68	James M Armstrong	Leslie R Randall
1970-73		H R Pilbeam
1974-77		A J Blower
1978		J P Johnson
1979-81		C Cheesman

Occupants of 3 & 4 Martyr's Cottages		
1867-70	Thomas Bolton, general labourer	
1871		John Clacey, gardener
1881-1900	James Wells, nursery labourer	Elijah Hersey, farm labourer
1901		John Denyer, navvy
1907-08	Stephen Spooner, blacksmith	
1909		

and *Prince of Wales Tavern*).

Thomas Salter, applied for a [full] license for the *Prince of Wales* in March 1863. The license was refused. In making his case, he stated that the building had been built by Thomas Taunton, at a cost of upwards of £900.²⁷

Thomas presumably went ahead offering accommodation and serving beer to his customers (he would not at this time have needed magistrates' approval for a beer license). The following year, a license **was** granted to Thomas Salter, in March 1864; it was pointed out that the stabling accommodation had been increased [in 1876 there was stabling for 12 horses]. The chairman said that, since the last licensing day, several of the magistrates had visited the premises and, in his opinion, they had been mistaken to refuse the license the previous year.²⁸

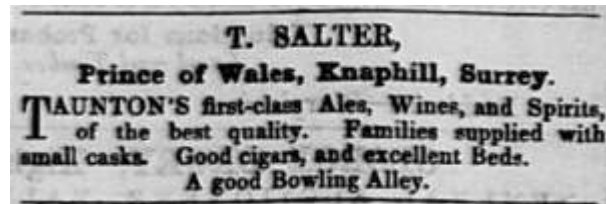


Figure 68. Advertisement, September 1864

Thomas Salter died on 31st January 1875.

From 1891 to 1898, the licensee was Albert Edward Inwood. When he died in 1898, his widow Mabel took over the license until 1901.

Mabel, in 1901, then remarried to Daniel Jelley. Daniel was the son of Thomas Jelley, landlord of the *Queen's Head*, Knaphill from 1870-1901. Daniel and Mabel then ran the *Queen's Head* until 1905.

One of the more interesting characters who became licensee of the *Prince of Wales* was George Hirsch (aka George Jackley). Even though he was only there for a short time (about 5 years) he had his name on the pub building when the brewery had official photographs taken in about 1940 (Figure 69). George was a comic actor who was the leading comedian for the Melville Brothers at the Lyceum Theatre, during the inter-war years. George, himself, was the son of Nathan Jackley who, with his own troupe, The Jackley Wonders, performed in circuses throughout Europe and the United States.

George Jackley retired in the late 1930s and took over the *Prince of Wales* in 1939. After leaving in 1944, he lived in Horsell, where he died in 1950.

²⁷ *West Surrey Times* 7 March 1863

²⁸ *West Surrey Times* 12 March 1864



Figure 69. *Prince of Wales* c1940



The *Prince of Wales* was demolished in the early 1990s; the houses of Capstans Wharf now cover the site.



Figure 70. The *Prince of Wales* being demolished

Proprietors/managers of the <i>Prince of Wales</i>	
1863-74	Thomas Salter
1874-76	William Fowler
1880-81	George Brown
1881-82	Edwin Caiger
1887-91	William Wickens
1891-98	Albert Edward Inwood

1898-1900	Mrs Mabel Thurston Inwood (widow of Albert)
1900-1907	David Jackson
1907-1913	James Thomas Ayres
1913-14	Mrs Alice Ayres (widow of James)
1914-29	Frederick Campbell Sleigh
1930-38	Victor Henry Greaves (previously at <i>Queen's Head</i> , Byfleet)
1939-44	George Philip Jackley Hirsch (aka George Jackley) ²⁹
1944-47	John Edward Farmer
1947-56	Mrs Irene E Farmer (widow of John)
1957-68	Kenneth Reginald Peacock (previously at the <i>Drummond Arms</i> , Dorking)
1973	Ron and Lillian Nicholls

Between the Prince of Wales and Copse Road, the 1895 OS plan shows an 'old gravel pit'. No.s 18-28 Robin Hood Road and most of the houses on the south side of Copse Road were subsequently built thereon.

No.s 18 & 20

No.s 18 and 20 Robin Hood Road were built in the 1960s.

Occupiers of No.s 18 & 20		
1967-69	T B Tuck	D A Berry
1970-74	D A Eaves	
1975-76	Richard J H Winslade	Ronald M Buchanan
1978		Ruth Buchanan
1980-81		S D Bosley



Figure 71. No.s 18-20, 2022

²⁹ George Jackley was, for 30 years, a well-known star of music halls and pantomimes

No.s 22-24 – Ravenswood and Lynthorpe

Ravenswood and Lynthorpe are a pair of semi-detached houses, constructed in the 1920s, probably by Sidney Charles Renshaw, engineer, who owned the land from 1922 until 1929.

Occupiers of Ravenswood and Lynthorpe		
1925	William Mersh	
1926		A Constable
1928-39	Sidney Charles Renshaw, HY-RIB fixer	Albert G Blake
1946	Gerald D Echlin	
1949-56	Bernard Manning	
1961-63	Fred A Downes	
1967-69	Anthony D Duddy	J C Ansell
1972-75		Reginald G Snelling
1977-78		Winifred E Conway
1979-81		
1983		B Windsor



Figure 72. Ravenswood and Lynthorpe, 2022

No.s 26 & 28 – Glenvalley and Malvern

Glenvalley and Malvern are a pair of semi-detached houses, built in the 1930s.

Occupiers of Glenvalley and Malvern		
1939-48	Arthur Breeds	Seymour Ewens
1949-54		Vera J Ewens
1945-56		

1967-68	Leslie L Cook	
1969-70		Peter J Standing
1972-75		Ronald A Clark
1976		
1977-78	Grant Watson	Robert H Marchant
1979-83		



Figure 73. Glenvalley and Malvern, 2012

No.s 30 & 32 – The Bungalow

The Bungalow was built in about 1920. From the start, it was divided into two tenements, known as No.s 1 & 2 The Bungalow.

Occupiers of The Bungalow		
1921	George J Pinner	George Harold Randall
1936	Albert M Richards	
1939-45	Madge Thomas	
1946-49		
1951-63	Albert Henry Denyer	William H Randall
1968	<i>vacant</i>	
1974-75	Alice E E Gibson	
1977-78		
1980-83	D W Petrie	



Figure 74. The Bungalow, 2012

Orchard Nursery

The area immediately beyond Copse Road (see below) was, from 1902, the site of an orchard or nursery. It had previously been a part of Jackman's Nursery (see Vol 1). On the 1840 Tithe map, it is plot 1533 and was part of the land rented by George Jackman from William Chandler.

The 1895 OS plan shows several large greenhouses on the site.

In the twentieth century, the name seems to alternate between Orchard Nursery and Victoria Orchard.



Figure 75. Nursery shown on 1916 OS map

Occupiers of the nursery	
1840-67	George Jackman
1867-87	George Jackman junior
1902-04	John Gilpin
1904-17	Orchard Nursery (Arthur George Smith)

1918-29	Victoria Orchard (James Scott)
1930-33	Orchard Nursery (H Cook)
1935-39	Victoria Orchard (Frederick William Morris)

During World War II, the land was probably put over to food production.

No.s 34-72

At the end of the Second World War, a row of twenty houses, mainly semi-detached bungalows, were built on the site of Victoria Orchard. These were initially numbered 1-20 Robin Hood Road. They were later renumbered 34-72. Most have since been extended into the roof-space and many sideways and/or rearwards.



Figure 76. Post-war bungalows, 2022

COPSE ROAD (LEFT)

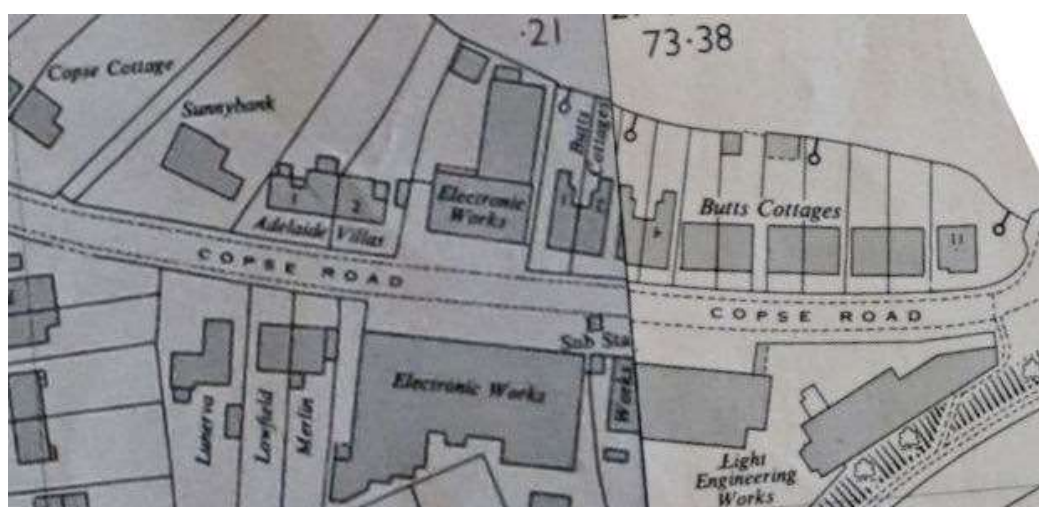


Figure 77. Copse Road from 1967 OS map

Copse Hill Villa

Copse Hill Villa was built on the north side of Copse Road, at its junction with Robin Hood Road, in about 1898. The first occupants were Job Savage, a bricklayers foreman and his wife Jane. They later moved to Norfolk House in Barrack Path.

By the 1920s, the name was appearing in directories as Copsehill Villa; by 1957, it was known as Copse Cottage.

Occupiers of Copse Hill Villa	
1898-1900	Job Savage, bricklayers foreman
1902-06	William Collins, brickmaker
1907	Ashton J C Shrubsole, gardener
1908-14	William Steele, gardener
1915-47	William Denyer, grocer
1950-56	Eric C Telfer
1963	<i>vacant</i>
1967-93	Albert Henry Denyer

Sunny Bank

Sunny Bank was built in the late 1880s. The first occupants were Andrew Young, a civil servant in the prison service, and his wife Annie Theresa. After Andrew died in 1915 (his wife pre-deceasing him), the house was occupied briefly by his married daughter, Isabella.

In 1918, Andrew's son, Arthur, took possession of the house and opened a general store in an extension to the side of the house.

Arthur died in 1841 and his son, Arthur Andrew, then carried on the store until his death in 1987.



Figure 78. Drawing of Young's store³⁰

³⁰ SHC, 6812/6-7, *Woking and environs: scrapbooks compiled by Anthony Bathurst of Guildford*

Occupiers of Sunny Bank	
1889-1915	Andrew Young, prison officer
1915-17	Mrs Isabella Evans
1918-41	General Shop (Arthur Young)
1941-87	General Shop (Arthur Andrew Young)

Adelaide Villas

Adelaide Villas are a pair of semi-detached houses, built in the late 1880s. The first recorded occupants were Charles William Howard, a cattle dealer, and his family.

By 1897, both houses were in the possession of William Sherman, who lived in one and rented out rooms in the other.

Occupants of Adelaide Villas		
1888		Charles William Howard, cattle dealer
1889-91	Daniel Goodyer, nursery labourer	
1892		
1897-1902	William H Sherman, lodging house keeper	
1903	Christopher Akehurst, carpenter	
1904		Edward Bullman, coachman
1905-06		
1907	A Rainbow; G Knight	E J Hood
1908		Henry Shrubsole
1911-13	A Dawson	Ashton J C Shrubsole
1915-20		Edward John Howard
1925-28	George Andrews	
1933	T Brindly	
1937	A E Martin	Alfred J Stedman
1939	<i>vacant</i>	
1940-45		
1947-63	James Povey	Alfred E Adams
1968-74	M Sultan	
1975-76	Charmaine M Sultan	
1977-78	James G Balwave	
1979-81		

Electronic Works

In about 1953, Mervyn Instruments Ltd (a subsidiary of Mervyn Sound & Vision Co. Ltd) built an industrial building in Copse Road. Mervyn Sound & Vision already had a factory on the opposite side of the road (where 1-5 St Johns Waterside now is) – see page 62.

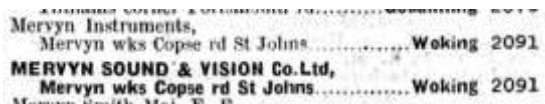


Figure 79. 1955 telephone directory



Figure 80. Mervyn Instruments c1957

In 1963, Gulton Industries (Britain) Ltd, a British subsidiary of an American firm moved in. Gulton Industries were best known for their battery technology producing rechargeable torches, emergency lights and a cigarette lighter which used neither fuel nor flints.



Figure 81. Autocar advertisement 1964



Figure 82. Gulton Industries rechargeable lighter

Gulton Industries had facilities in several parts of the country. Although it is listed in the 1964 Woking Street Directory, it seems the facility in Copse Road did not last long enough to make it into the telephone directory.

By 1965, Miniature Electronic Components (M.E.C.) Limited had taken over the building; they also took over the other Mervyn building across the road (see page 62).

It appears that, in about 1970, M.E.C. Ltd moved to Sunderland and went into voluntary liquidation in November 1972.³¹

The building has been refurbished and converted into flats. It is now known as Friar House.

Butt's Cottages

Butt's Cottages are a row of eleven cottages; two pairs of semi-detached cottages, three pairs of larger, semi-detached cottages and a detached cottage called Melita Villa. They were built by a Woking builder, developer (and councillor) called William John Butt, between 1904 and 1906.

William Butt was born, in 1841, in Kington Magna, Dorset. By 1871, he and his family were living in Woking. During a Council debate in 1905, about the provision of workers' cottages and their possible provision by the Council, William Butt stated that he had built between 400 and 500 houses in the Woking area.³²



Figure 83. Butt's Cottages, 2023

Melita Villa

Melita Villa was constructed, in about 1905, alongside Butt's Cottages as a detached dwelling. It was later referred to as No. 11 Butts Cottages.

³¹ *The London Gazette* 14 November 1972

³² *West Surrey Times* 8 April 1905

Occupiers of Melita Villa	
1908-11	Percy Arthur William Collyer, gardener
1913-17	Harry Hall
1920-47	Mrs Mary Ann Wells
1956-70	George Hubert Allen
1973-83	George S D Allen

COPSE ROAD (RIGHT)

The right-hand side of Copse Road remained undeveloped until about 1930, when Lowfield and Merlin were erected. In 1903, the London Necropolis & National Mausoleum Company had conveyed to Edwin Small, builder, a piece of land fronting Robin Hood Road, adjoining the Prince of Wales public house. In 1922, Small's widow sold the land to Sydney Charles Renshaw, engineer. Renshaw, in 1928, conveyed most of the land, together with a semi-detached house, known as Linthorpe, on the south-west side, to John Charles Renshaw, dairyman. John Renshaw built two houses on part of the land, 'Merlyn' and 'St Agnes' (later 'Lowfield').

Today, the whole of the road has been infilled with modern housing.

Lunerva

Lunerva was built in the early to mid-1950s.

Occupiers of Lunerva	
1954-68	Beatrice Young
1974-75	Leslie Young
1977-81	R Harrison

St Agnes / Lowfield

St Agnes was built in about 1936. The first occupant was Ethelbert Leonard Foster, who moved in from 2 Butts Cottages. Ethelbert died in 1943 and his widow, Agnes, and son continued to live in the house. By 1938 the name had been changed to Lowfield.

Agnes Foster died in 1968 and, in 1972, her son, Edward, purchased the freehold.

Occupiers of St Agnes / Lowfield	
1937-43	Ethelbert Leonard Foster
1943-68	Mrs Agnes L Foster
1968-78	Edward Leonard S Foster

Merlin

Merlin was built in about 1936, along with St Agnes. The first occupant was Henry Grant.

Occupiers of Merlin	
1937-39	Henry Grant
1945-51	George R Bugler
1954-56	Hilda C Cockland
1957-68	Leslie V S Douglas
1973-81	Margaret J Douglas

Factory 1

Mervyn Sound & Vision Company Ltd, established in London in the 1930s, were pioneers of electro-mechanical television.



The instrument ready for the first test.



Showing the mounting of the motor to uprights and fixing to the base board. Note the second upright from the base facing inward, which is not appearing on the complete.

See how easy it is to build the DAILY EXPRESS TELEVISION KIT

The DAILY EXPRESS TELEVISION KIT produced by "MERVYN" can be readily built by all. Just glance at the photographs reproduced on this page and judge the simplicity of the assembly and connecting up.

In one evening it can be ready and tested for the reception of the B.B.C. Broadcast.

This Kit carries on the box the following, and no other kit should be accepted as an official Kit.

"This Television Kit produced only by The Mervyn Sound and Vision Co., Ltd., after the most exhaustive tests, has been approved by the 'Daily Express.' The 'Nu-Glo' 16 Television Lamp which is incorporated has made possible results of a brilliancy and success hitherto unobtainable with the more general type of Neon-Lamp. The 'Nu-Glo' Lamp has justified the 'Daily Express' approving this Kit and no other Kit of parts is recognised by them as conforming to their specification, nor can they accept any responsibility if any other Lamps or parts are substituted for those described in their specification."

The "Daily Express," 27th March, 1934.

THE MERVYN "NU-GLO" 16

lamp allows you to see the pictures in a normally lighted room, is exclusive to this Kit, and is included in the

PRICE £5 9 6

Ask your dealer for details

A leaflet is available giving full information.

THE MERVYN SOUND & VISION CO. LTD.
4, HOLBORN PLACE, LONDON, W.C.1.

Managing Director: W. J. NOBBS. Telephone: Holborn 6332 French Office: 8, Square Henri-Delormel Paris 14e.



Showing the top frame in position and rightening up the screen so that the top frame is just held.



Completing the simple wiring.

There is news in the "Television" advertisements

Figure 84. May 1934 advertisement for Daily Express Television kit

In about 1952 (the plans were approved in September 1951), Mervyn established a factory in Copse Road, where 1-5 St Johns Waterside now is. They had previously been in Maybury Road, Woking and then Thornash Road, Horsell.

The factory was opposite the factory of their subsidiary,, Mervyn Instruments Ltd (see page 59) on the other side of the road.

In 1953, plans were submitted and approved for an extension to the factory almost doubling its size. The following year a further extension was approved.³³

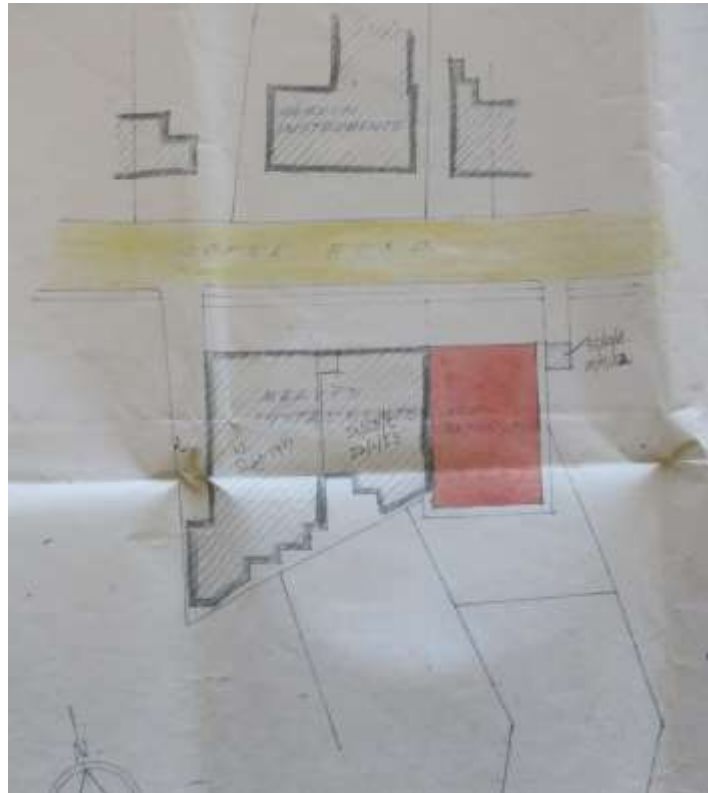


Figure 85. 1954 site plan showing the two factories

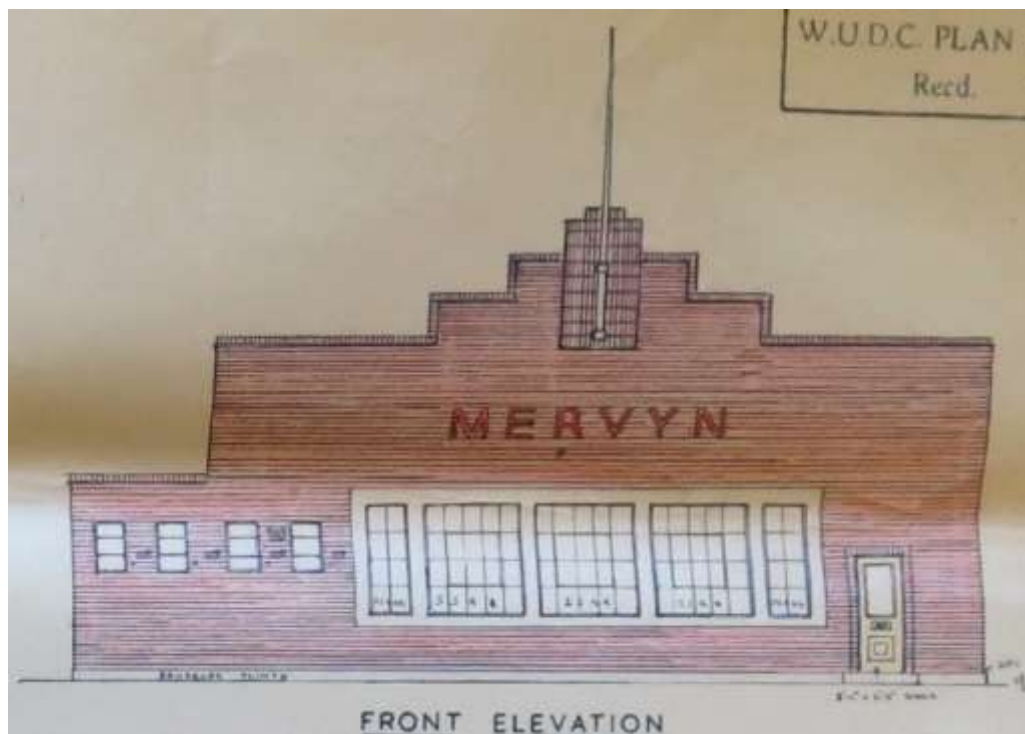


Figure 86. Frontage in 1952

³³ SHC, 8789/50/43, St Johns, Copse Road: additions to workshop. Owner: Mervyn Sound & Vision Co. Ltd. With 53, dated 20 Sep 1951: St Johns, Copse Road: steel framed factory. Owner: Mervyn Sound & Vision Co. Ltd.



Figure 87. Frontage in 1954 plans

By 1965, Miniature Electronic Components Limited had taken over the building.

It appears that, in about 1970, M.E.C. Ltd moved to Sunderland and went into voluntary liquidation in November 1972.³⁴

Working Men's Club

The St John's and District Working Men's Club and Institute had occupied Hill View, in Robin Hood Road, since 1921 (see page 41). With the outbreak of the Second World War, it appears to have been compelled to leave those premises and move into a temporary wooden building.³⁵ The 1949-50 Woking street directory lists the club in Copse Road.

Prior to the war, the club had a membership of 200. Owing to the restricted accommodation of the temporary building, the straitened economic conditions of the late 1940s, and loss of men in the fighting, by 1950 the membership had dropped to 50.

In 1950, plans were submitted and approved for the building of a new clubhouse, at the eastern end of Copse Road.³⁶ Initially, a building permit was refused by the Ministry of Works.³⁵

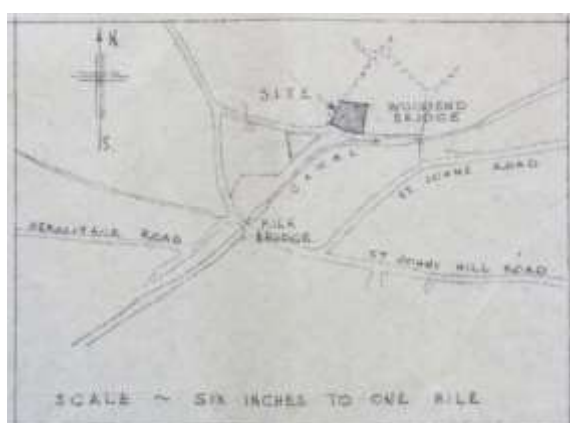


Figure 88. Site of new clubhouse

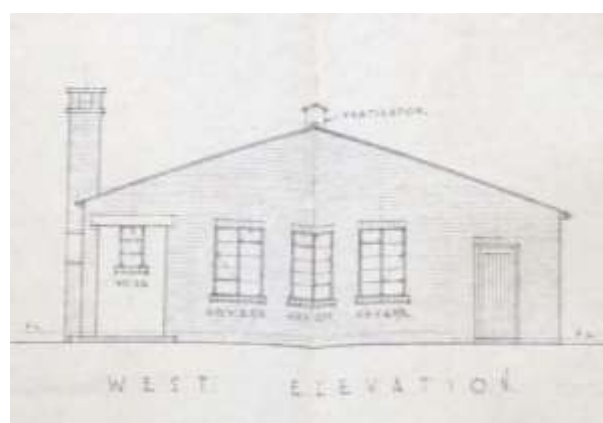


Figure 89. West elevation

³⁴ *The London Gazette* 14 November 1972

³⁵ SHC, 7562/5/29, Proposed Working Men's Club, St John's with related correspondence to and from O C A Slocock

³⁶ SHC, 8789/50/204, St John's, Copse Road: St John's Working Men's Club new premises

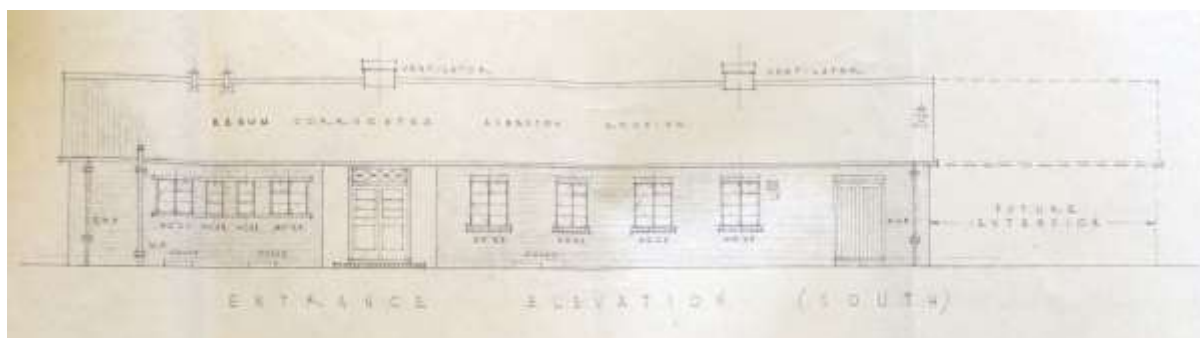


Figure 90. Front elevation

The club did not have the resources to afford the estimated cost of the new building, of £4000. Despite removing one section of the building from the plans (to be added later as an extension) and planning to do much of the construction work with volunteers, it was still not viable. The club, in March 1951, approached their beer supplier, H G Simonds Ltd of Reading, for a loan of £1500 but this was refused.

It appears the club folded; it is probable that some of the membership went to Woking and some to Knaphill. Alternatively, they may have joined the St John's Men's Club (see Vol 1) with which the Working Men's Club would have been in competition.

Factory 2

In 1951, The Rowan Property Company Ltd submitted plans for a factory to be built at Thorn ash the eastern end of Copse Road.

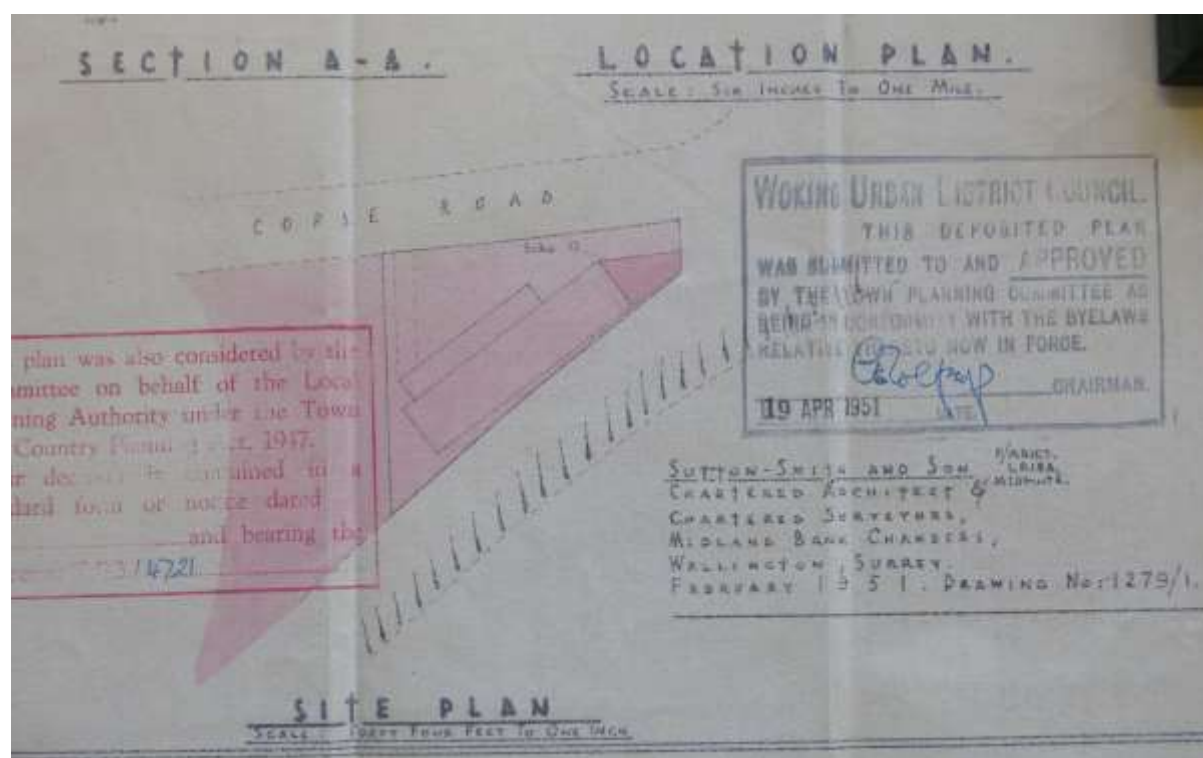


Figure 91. Extract from 1951 plans

By 1953, the building was occupied by Farner Ltd. From 1953 to 1955 Farner Ltd was described as refrigeration manufacturers; from 1957-68 as precision engineers

The Rowan Property Company Ltd went into liquidation in March 1976.³⁷

Farner Ltd went into liquidation in March 1979³⁸, at which time they were described as general engineers.

³⁷ *The London Gazette*, 12 March 1976

³⁸ *The London Gazette*, 22 March 1979

ST JOHN'S LYE

THE LYE

Before St John the Baptist church was built (see Vol 1) and the area took the name of St John's, the Lye seems to have been a part of and known as Brookwood Lye.

In 1854, the Lye was part of the land proposed to be purchased by the London Necropolis Company for their cemetery (see Vol 1). The Lye exists as it is today because of the intervention by the then Vicar of Woking, the Reverend Bowles, who was concerned that the inhabitants of St John's would lose all their common rights. He negotiated for the 60 acres of St John's Lye to be excluded from the sale.

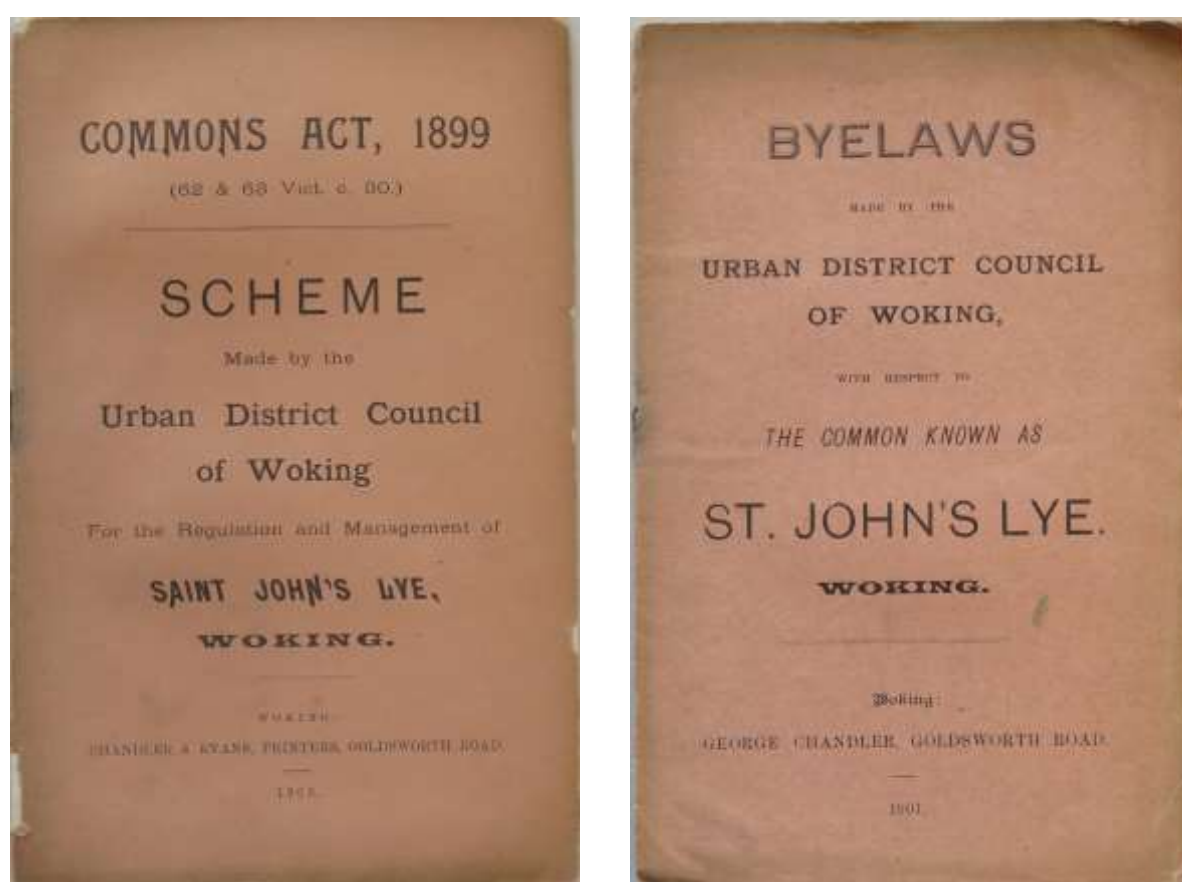


Figure 92. The Lye – Laws and byelaws

SPORTS

Cricket

By the time of the 1895 OS map, a cricket ground had been laid out on the southern half of the Lye, near the railway. The St John's Cricket Club was in existence by 1888.



Between the wars, the cricket ground became the football ground and a new cricket ground was established on the northern part of the Lye (1934 OS map). This may have been a consequence of Woking Council taking over the care and allocation of the cricket pitches from January 1928.³⁹



ST. JOHN'S CRICKET CLUB.

The members of this club closed the present season with a match on the St. John's Recreation Ground on Wednesday, September 19th, between sides captained by Mr. T. Gloster and Mr. G. Collyer, the latter team winning by an innings and 5 runs. After the match the players and their friends sat down to a capital tea supplied by Mr. Jackson, at the Row Barge Inn. The cloth being cleared, a very enjoyable evening was spent in harmony. Score :

MR. T. GLOSTER'S TEAM.			
J. Daborn b Collyer	.. 13	c Howard b Chaplin	8
T. Bearman c Chaplin b Smithers	0	run out	2
C. English b Collyer	.. 0	b Collyer	6
T. Gloster run out	.. 3	c and b Smithers	6
W. Underhill b Smithers	.. 1	c Chaplin b Smithers	0
H. Bowden c Chaplin b Smithers	0	run out	4
G. Mayham b Smithers	.. 0	c Collyer	0
T. Murphy not out	.. 2	c and b Smithers	4
J. Daysh run out	.. 2	not out	1
C. Chaplin b Collyer	.. 0	run out	1
Extras	.. 4	Extras	9
Total	.. 25	Total	.. 38

MR. G. COLLYER'S TEAM.

R. Bevis c Bearman b Bowden	8
J. Smithers b Bearman	0
B. Burchett b Bowden	14
G. Collyer b Daborn	22
T. Daysh b English	12
T. Howard b Daborn	1
H. Chaplin lbw b Gloster	2
W. Hussey b Daborn	0
J. Vaughan b Daborn	0
J. Collis not out	1
Extras	8
Total	68

Football

The St John's Football Club was in existence by 1905.

Tennis

The 1967 OS map shows that two tennis courts had been laid down between the football ground and the railway.

In 1840, the tithe map⁴⁰, shows a plot of land, cut from the common, stretching from where the clock house now is, past the memorial hall and including where the house named Gorsewood Cottage now is. This land, measuring just under an acre, was owned and occupied by Thomas West; the 1841 census describes Thomas as an agricultural labourer. Thomas had a cottage on the canal-side opposite to where the chemist shop now is.

³⁹ *Surrey Advertiser* 27 December 1927

⁴⁰ SHC 6198/13/108, *Tithe apportionment for the parish of Woking*, December 1841

In 1871 Thomas West, then aged 67, was living in Hampshire, with his daughter. The 1870 OS map shows the beginning of development on the Lye site.

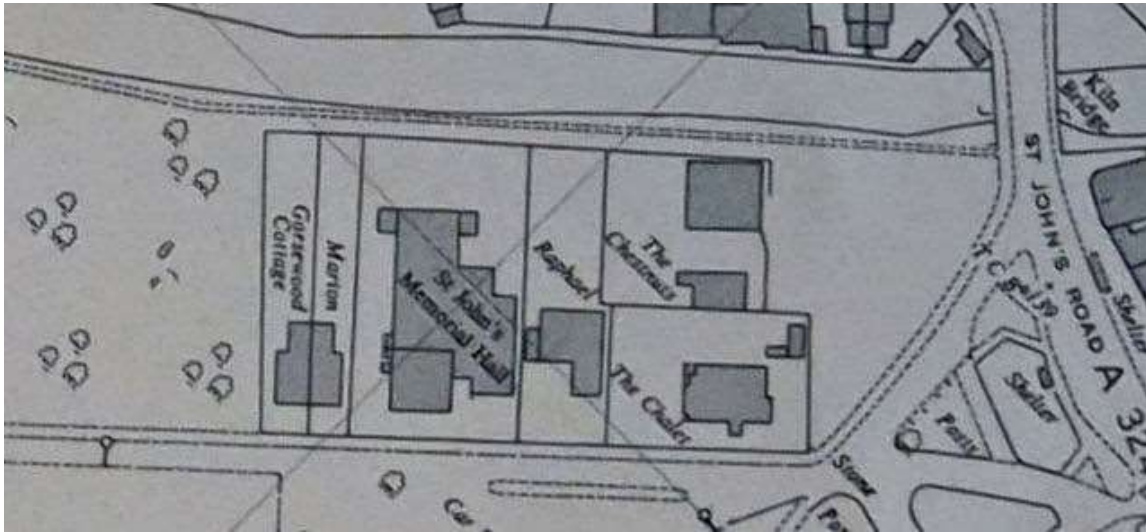


Figure 93. From 1967 OS map

The Clock House

The Clock House was built upon the site of Stephen Spooner's smithy (see below), in about 1990. It comprises two, 2-bedroom flats.



Figure 94. The Clock House and The Chestnuts, 1997

The Chestnuts

Stephen Spooner was born in Woking in 1877. He was living in Croydon, in 1901, when he married Emily Bond.

Stephen and Emily moved to St John's in about 1904 and Stephen established a smithy - more or less where the Clock House now is.

After short spells living in Hermitage Road, St Johns Road and Robin Hood Road, Stephen and Emily moved into a house next to the smithy, called The Chestnuts.



Figure 95. The forge

Stephen died in 1960, the smithy subsequently closing. Emily died a few years later, in 1967.

The Chestnuts was subsequently converted into two flats, one ground floor, one first floor.

Occupants of The Chestnuts	
1910-60	Stephen Spooner
1960-67	Mrs Emily Spooner
1968	<i>Vacant</i>
1974	<i>Two flats</i>

Festival Path

The narrow road which runs along the north-western edge of St John's Lye is shown on maps and in directories as 'St John's Lye'. However, it is also known as Festival Path.

Le Chalet

The house known as Le Chalet was built in the mid-to-late 1890s. Originally, it was called Lavendar Cottage. The first occupant was Joseph Stoker, baker.

Wilfred Brattle moved in, in 1914, and it appears he changed the name to Le Chalet.

After the first World War, the house was jointly occupied by Miss Rose Pole and Miss Lottie Robinson, a gymnastics teacher and school headmistress respectively.

In 1924, George Savage and his wife, Rosina (who had moved from Westfield to be headmaster and headmistress of the St John's Schools) moved into the house.

Miss Rose Beatrice Pole

Miss Rose Beatrice Pole moved to St John's on 23rd December 1918. She worked as a gymnastics teacher at Miss Atkin's school in The Gables, West Byfleet.

Rose lived in several houses around St John's Lye:

- Le Chalet, as joint householder with Miss Lottie Robinson (1918-23)
- Marton (1924-28)
- Bides Cottages aka Lye End House (1930-37)
- Lye End Cottage (1937-75)

In the 1930s, Rose started (or took over) Lye End Nursery, which she ran alongside her teaching job. She became a Fellow of the Royal Horticultural Society.⁴¹ She bred a new variety of Aster – the Lye End Beauty.

In 1973, Rose's reminiscences about her life in St John's and the changes she had observed appeared in the programme for that year's St John's Edwardian Fete.

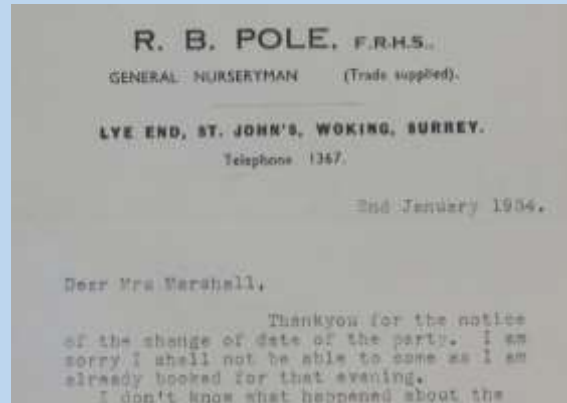


Figure 96. Lye End Nursery letterhead

In 1934, Le Chalet was rented (for £20 per week – a lot at the time) for the ill and dying Princess Shumshere Jung of Nepal. After her death, her body, in accordance with Hindu tradition, was carried over water (the Basingstoke Canal) and cremated on an outdoor funeral pyre in the grounds of Woking Crematorium (see Vol 1).

George Savage died in 1931 and Rosina in January 1940, after which Le Chalet passed to their daughter, Beatrix, known as 'Trixie'.



Figure 97. Le Chalet, 1960s

⁴¹ At that time, all members of the RHS were known as Fellows

Today, Le Chalet is known as The Old Hayloft.

Occupants of Le Chalet	
1897-1909	Joseph John Stokes, baker
1914-15	Wilfred Herbert Brattle, civil servant
1916-17	Mrs Gunton
1919-23	Miss Rose Beatrice Pole, gymnastics teacher & Miss Lottie Bay Robinson, school headmistress
1924-31	George Bellas Savage, school headmaster
1932-39	Mrs Rosina Savage, school headmistress
1940-47	Miss Beatrix Annie Savage, secretary
1948-50	Major Thomas M O Lowe
1951	Betty May
1956	E M Butler
1958-60	Lt Col Victor James Senior
1961-69	Victor C Gunn
1969-78	Harold Keir Hanson
1978-83	Mrs Winifred Hanson



Figure 98. The Old Hayloft, 2022

Little Thurlow

Little Thurlow was built on part of the garden of Le Chalet, next to Raphael, in about 1971.

Raphael

Raphael, a three bedroom detached bungalow, was built between Le Chalet and the Memorial Hall in about 1966.

St John's Memorial Hall

In 1939, the land next to Le Chalet was owned by Rosina Savage, widow. It was probably her daughter, Beatrix [who was due to inherit when her mother died – which she did in January 1940], who gave the land for a Young Men's Christian Association (Y.M.C.A.) recreational hut to be built, primarily for the Canadian soldiers stationed at Inkerman Barracks. Beatrix had arranged more than 500 concerts for servicemen during the First World War.

The hut, which cost £2,500, was opened on 4th May 1940 by HRH Princess Helena Victoria of Schleswig-Holstein, after whom the hut was to be named (the same Princess Victoria who, in 1916, had previously opened the earlier Y.M.C.A. hut in Barrack Path).⁴²

Although termed 'a hut', the main hall, which measured 100ft by 30ft, contained a stage with full lighting. There was provision for billiards and table-tennis and a 'well-equipped lounge'. It also had six baths.⁴³ The hut had four full-time staff including the manager, a member of the Y.M.C.A. Canadian branch, plus 60 volunteer part-time employees.

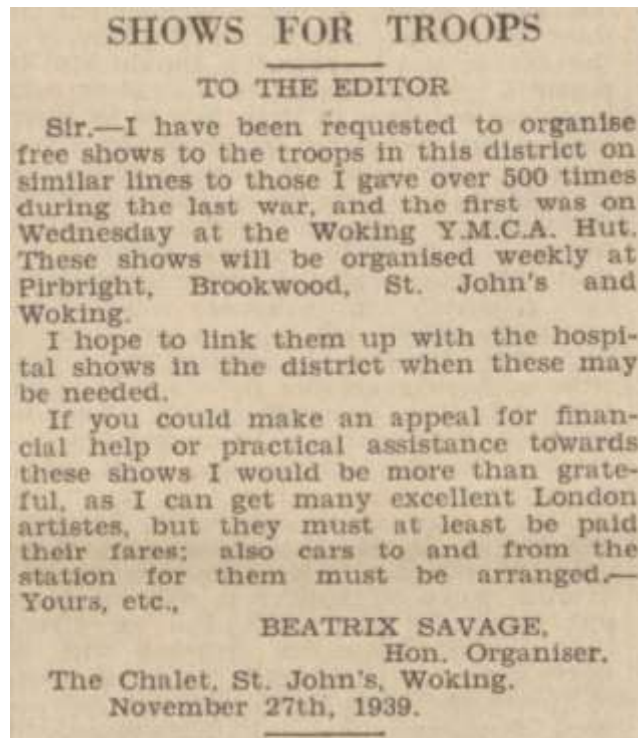


Figure 99. *Surrey Advertiser*
2 December 1939

After the war, it was decided that St John's should have a memorial, independent of anything that Woking provided. It was also decided that this memorial should be a village hall. One of the options suggested was that the village purchase the Y.M.C.A. hut.⁴⁴ This is the option that was eventually chosen; Sir William Norman Raeburn Bart of The Mount, St John's Hill Road purchased the freehold for £2000, on behalf of the residents of St John's. The hall is managed and owned by the St John's Village Memorial Hall Association.

As with many timber buildings of its era, wear and tear left its mark on the lightly constructed wooden structure. The hall's structural integrity deteriorated rapidly to a point beyond economic and practical repair; the roof regularly leaked, the floor become twisted and uneven, windows could

⁴² *Surrey Advertiser* 8 May 1940

⁴³ *Surrey Advertiser* 4 May 1940

⁴⁴ *Surrey Advertiser* 6 April 1946

no longer be closed in misshaped openings and the lack of sound insulation restricted use with significant limitations on letting opportunities. In addition, the hall was very expensive to heat with little or no thermal insulation provided in the roof space or walls. The kitchens and toilets were of a poor standard and were just about serviceable.



In 2003, a set of plans were commissioned by the Hall Committee which detailed a new 2 story hall on the existing site. Planning permission was granted but the building was never built, due to the significant lack of funds.

The Hall Committee turned to Woking Borough Council (WBC) and together came up with another set of plans, this time to move the location of the hall onto St John's Lye itself and pass the existing land onto the council for housing. However, following a campaign from many St John's villagers objecting strongly to a new hall being built on the Lye, this application was turned down at a planning committee meeting in November 2008.

An alternative plan was devised by a largely new Committee, jointly with the St John's Village Society (Residents Association), to build on the existing site and to generate the shortfall in funds by building 4 town houses that would be sold to generate cash in support of closing the funding gap. The plans were prepared and presented and this scheme was approved by WBC planning committee.

Finally, with the knowledge that even with the sale of the 4 houses there was still a funding gap to close to enable the construction of a new hall, WBC intervened and agreed to fully fund the project in its entirety, negating the need for the town houses at the rear of the site. Yet another set of plans were drawn up, this time by WBC's architects, and planning permission was granted for a new contemporary hall maximizing the use of the current site.

On 9th March 2012, the old hall closed its doors for the last time and demolition commenced in preparation for the building work to begin on the new St John's Village Memorial Hall.

The new hall opened on 31st May 2014.

Marton & Roydon

Marton and Roydon are a pair of semi-detached houses, built in about 1910; they are first mentioned in the 1911 census.

Violet Cox changed the name of Roydon to Gorsewood Cottage, after she moved in, in 1961.



Figure 100. Marton and Gorsewood Cottage 1960s

Occupants of Marton & Royden		
1911-17	Alfred Ernest Ferguson	Harry Spooner
1917-19	Mrs Amy Florence Maud Ferguson	
1920-21		Gerald Oliver Graves
1922-25	George Bellas Savage	
1925-28	Miss Rose Beatrice Pole	
1929	Richard Stanley Hoare	
1930-32		Leonard Arthur Kohler
1933		James Page
1934-38	Albert Edward Bright	Hilda Dorothy Hollebon
1939		
1940-43		Patrick McGonagle
1944-53		Mrs Rose McGonagle
1954		Edward Joseph McGonagle
1955-57	Mrs Alice Mabel Bright	
1958-60		Violet C Cox
1961-67		Robert Scott
1974-78		
1981		



Figure 101. Marton and Gorsewood Cottage 2022

Public conveniences

The public conveniences situated on the north-western edge of the Lye, was built by Woking Council in the 1960s. Planning permission was applied for in 1965.⁴⁵



Figure 102. Public conveniences, 2022

⁴⁵ *Surrey Advertiser* 9 January 1965

Carolyn Close

Carolyn Close is a development of four detached houses, built in about 1960.

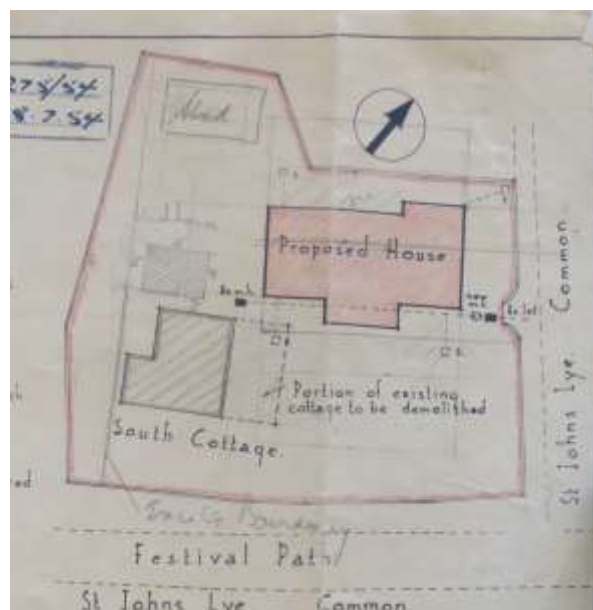


Figure 103. Carolyn Close, 1960s

South Close

South Close was built in the grounds of South Cottage (see below). Plans were submitted and approved in 1954, but the erection depended on the partial demolition of South Cottage but that could not be done until the evacuation by the then tenant.

Figure 104. Part of 1954 plans



South Close first appears on the 1968 OS map which was surveyed in 1967. It does not however appear in the 1968 nor 1969 Woking street directories.

By the time South Close was built, the Carolyn Close development had been completed. This and the requirement for access to 1-4 Redway Cottages meant that the position of South Close had to be adjusted.

Figure 105. Part of 1967 OS plan



South Close was occupied from 1974 to 1981 by Thomas A McLaurin

South Cottage

South Cottage was first recorded in the 1891 census. It was likely built in the mid-1880s; Mrs Eliza Mathis (the first known occupant) was living in staff accommodation at Woking Prison, with her husband, prior to his death in 1883.

Occupants of South Cottage	
1891-1918	Mrs Eliza Mathis, widow
1921-47	Ernest F Mathis
1949-63	Mrs Violet E Mathis
1967	<i>vacant</i>

Lye Cottages

Lye Cottages refers to about a dozen cottages which were built, in several phases, along the southern side of the Basingstoke canal, between 1870 and 1900. They were built on three plots of land shown on the 1840 tithe map (1515,1516, & 1517), owned respectively by William Fenn, Peter Eales and Samuel Newey.

In the 1930s, Lye Cottages were renamed as Redway Cottages. Prior to this, due to the scattered positioning of the cottages, it is difficult to be sure who was living in which cottage.

1-4 Lye Cottages

In 1840, the tithe map⁴⁶, shows a plot of land, cut from the common, where 1-4 Redway Cottages now are. This land, measuring three-quarters of an acre, was owned and occupied by Samuel Newey; the 1841 census describes Samuel as of independent means. Samuel had a cottage facing onto the canal towpath. It is possible that this was a squatter settlement and likely built at or just after the building of the Basingstoke Canal.

Although neither appear in either the 1851 or 1861 censuses, the electoral rolls show Samuel having joint occupation of the cottage with his son-in-law, William Hardy until the mid-1860s.

⁴⁶ SHC 6198/13/108, *Tithe apportionment for the parish of Woking*, December 1841

1-4 Lye Cottages were built, on the site of Samuel's land, by Charles Redway, in 1896 – recorded by a plaque on the rear (canal-facing side) of the cottages.

In about 1938, 1-4 Lye Cottages were renamed as 1-4 Redway Cottages.



Figure 106. Charles Redway's plaque



Figure 107. Lye End & Lye Cottages from 1967 OS map

Occupants of 1-2 Lye Cottages		
1899	John Jones	Henry Pearce
1901		Arthur Smith
1904		Alfred Smith
1907		Charles Green
1908	Frank Hall	
1909-11	Henry A Hall	
1913-31	Thomas Barnett	
1933-36		J Wye
1939		Eleanor H Smith
1947		Leonard W Smith
1951-56	Mrs Lucy Barnett	
1961-69	Peter A Redway	Trevor R Smith
1974-78		Eleanor M Smith
1979-81		

Occupants of 3-4 Lye Cottages		
1891	James Matthews	
1895		Sellwell
1899		Henry Underwood
1901		Alfred Smithers

1902		James Burchett
1904-05		
1907-35	William John Poulter	James Edwin Matthews
1935-39	Mrs Ellen F Poulter	
1946-49		Mrs E M Matthews
1951-63		
1967-69	C R Pullen	Alfred H W Wheeler
1974-78	Barry J Pullen	

5 & 6 Lye Cottages

The 1840 Tithe Map, shows a plot of land, adjacent to and to the west of that of Samuel Newey (see above), cut from the common. This land, measuring two-thirds of an acre, was owned and occupied by Peter [H]Eales; the 1841 census describes Peter as an agricultural labourer. Peter's plot, which had a cottage on it, was separated from the canal towpath by a narrow strip of common perhaps one and a half times the width of the canal. It is possible that this was a squatter settlement and likely built at or just after the building of the Basingstoke Canal. Peter, with his family, occupied the cottage until his death in 1864; his wife, Celia, having died a few months earlier the same year.

5 & 6 Lye Cottages were built, on the site of Peter's land, in about 1870 – they are shown on the 1870 OS map.

5 & 6 Lye Cottages were demolished in about 1938.

Occupants of 5-6 Lye Cottages		
1882	John Howard	
1898-99		James Matthews
1901		Charles P Shurven
1906		? Young
1907		
1911-12	Charles Burchett	
1913-14		Thomas G Sexton
1918	Arthur Cheeseman	Samuel Smith
1921-25	Thomas G Sexton	George Busby
1928-34	William Barney	John A Reed
1935-36	Sidney J Lintott	

7-12 Lye Cottages

In 1840, the tithe map⁴⁷, shows a plot of land, adjacent to and to the west of that of Peter Eales (see above), cut from the common. This land, measuring slightly less than half an acre, was owned and occupied by John Fenn; there are no other records of John Fenn and the 1841 census has the cottage

⁴⁷ SHC 6198/13/108, *Tithe apportionment for the parish of Woking*, December 1841

occupied by a William Fenn⁴⁸, described as an agricultural labourer. William had a cottage facing onto the canal towpath. It is possible that this was a squatter settlement and likely built at or just after the building of the Basingstoke Canal.

William Fenn died in February 1859; his wife, Jane, died in the same month.

7-12 Lye Cottages were built, on the site of William's land, in about 1870 – they are shown on the 1870 OS map.

In about 1950-55, 7-12 Lye Cottages were renamed as 7-12 Redway Cottages.



Figure 108. Redway Cottages, 1960s

Occupants of 7-9 Lye Cottages			
1895-98			Cyrus Cranham
1899	Arthur Smith	Charles Sherwin	
1901	Benjamin Baker		
1902-06	George Harding		
1907-14		Harry Hall	
1915-18	Stimshlane Vincent		
1921	William N Burchett		
1924-29			
1933-34			
1935-36		Walter Bowers	George Wye
1939-49	Thomas R Wye	Alice O'Rourke	

⁴⁸ William's father was called James and he died at the end of 1840, so it is conceivable that 'James' was mis-transcribed as 'John'

1951-55		Kenneth D Blake	
1956-63			Miss Lizzie M Wye
1969			Frank A L Lintott
1974-78			

Occupants of 10-12 Lye Cottages				
1895	James Moses	Maria Bullen	Henry Chowney	
1899		John Smith		
1905		Samuel Smith	Charles Chandler	
1913	Henry Hall			
1915	George Harding		Charles Burchett	
1916-21				Miss Burchett
1924				
1925-26			Albert Burchett	
1928-29		James Ledger		
1933		Joe Harding		
1934-56	Mrs Lois Burchett	Annie M Pearce		
1958-63				
1967-69		R A Mears		
1970-72	Michael F Russell			
1974-78		James T Pegman	Ronald V Pitt	

Lye End Cottage

Lye End Cottage is a single storey building, situated just to the west of where Nursery Cottages were later built.

Although, it was sometimes referred to in records as No. 13 Lye Cottages, Lye End Cottage is of a different design and construction to Lye Cottages.



Figure 109. Lye End Cottage

Occupants of Lye End Cottage	
1901-11	George Harding
1915-17	William Russell
1921	Mary Marshall
1925-36	Ernest F Barnett
1937-76	Miss Rose Beatrice Pole
1977-81	Barbara Burt

Nursery Cottages

Nursery Cottages were built in about 1936, between South Cottage and 7-12 Lye Cottages. They are numbered 1-6 from left to right looking from the road.



Figure 110. Nursery Cottages 2022

Occupants of 1-2 Nursery Cottages		
1937-61	William N Burchett	Edwin A Collyer
1963-69	B Burchett	
1974-78	Jessie C S Burchett	

Occupants of 3-4 Nursery Cottages		
1937-51	John A Reed	Eric William Barney
1955-78		Mrs Lucy M Barney

Occupants of 5-6 Nursery Cottages		
1937-39	Sidney J Lintott	Henry Boylett
1945-63	Mrs Doris G Lintott	
1967-75	Frederick W Tolnhurst	
1977	Stuart Craven	

Lye End House

Lye End House appears on the 1840 Tithe Map⁴⁹, as two cottages (plots 1513 & 1514). 1513 was owned and occupied by Samuel Hills; 1514 was owned and occupied by John Woolley. Neither of the cottages, nor either Samuel or John, appear in the 1841 census.

Probable that during the 1860s, the cottages were used as a beerhouse called the Fisherman's Retreat.

Fisherman's Retreat [<1866-1869]

One of only two references to the *Fisherman's Retreat* is in a press report of August 1866; Thomas Clarke 'of the Fisherman's Retreat, Woking' was fined 6s 6d with 18s 6d costs for 'selling beer at unlawful hours on a Sunday'.⁵⁰

There is no Thomas Clarke listed in Woking in the 1861 census. In 1871, a Thomas Clarke, agricultural labourer, was living in Providence Street (now Church Street East).

In 1869, Thomas's son, also named Thomas, died; the burial register records his abode as "Fishermans Retreat", The Lye, Woking'. Lye End House is a likely location for the *Fisherman's Retreat*, fronting onto the canal bank, so it could serve bargemen.

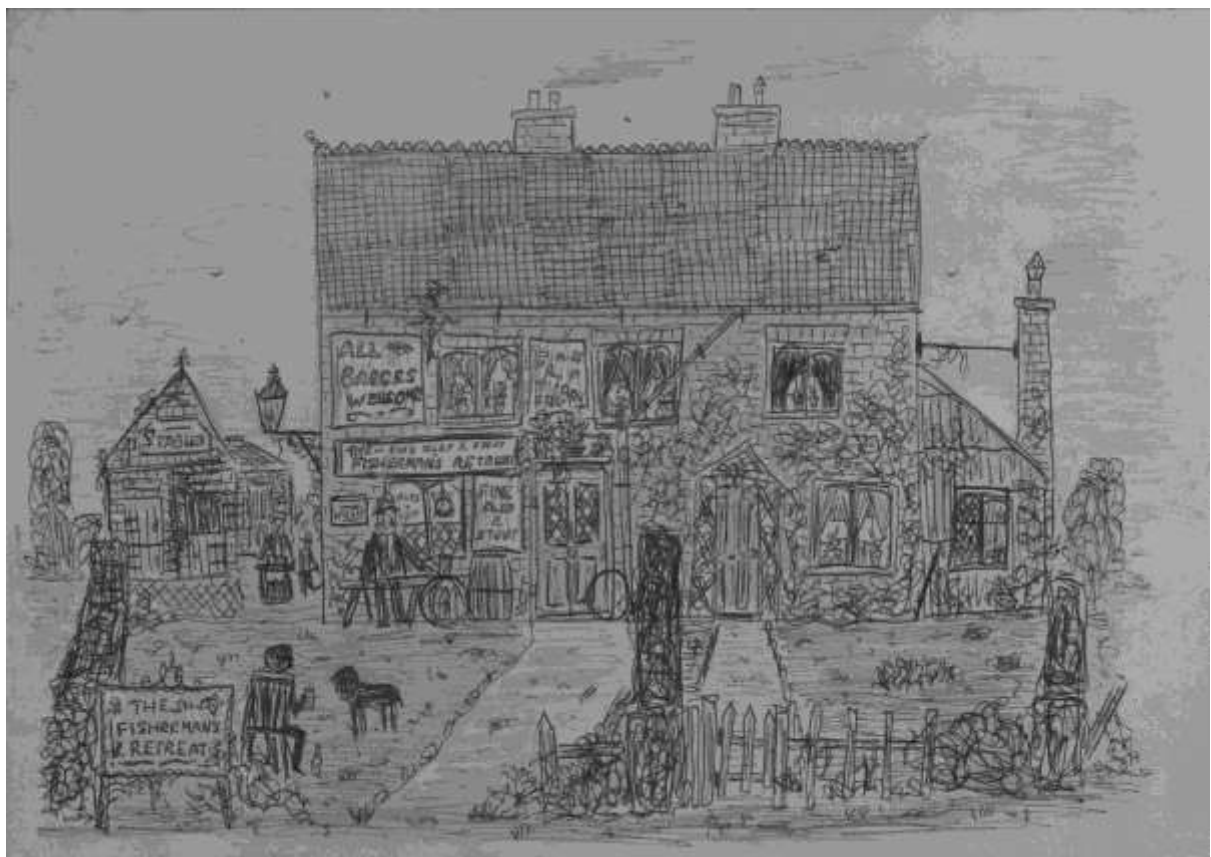


Figure 111. Ink drawing of the *Fisherman's Retreat*, (c.1900?)

After Samuel Bide established his nursery in the late 1890s (see Vol 1), these cottages were acquired by him and became known as Bides Cottages.

⁴⁹ SHC 6198/13/108, *Tithe apportionment for the parish of Woking*, December 1841

⁵⁰ *Surrey Advertiser* 25 August 1866

Bides Cottages were bought by Miss Rose Pole in about 1930. She had them converted into one house.⁵¹ From 1939, Rose Pole rented the house out; she herself moved into nearby Lye End Cottage and built up a nursery business.

Rose Pole, put the house up for sale in 1954. It was described:

“Charming Period House completely surrounded by lovely common land. Hall (17 by 14), 2 living rooms, 4 bedrooms, bathroom and separate w.c., small kitchen (part tiled) with view of woods from window over sink.

Garage (brick), Good outbuildings. One of the main features of the property is the garden, a small part of which is very attractively laid out with lawns surrounded with clipped yew hedges and topiary-work. The remainder (about 1½ acres) is now run as a nursery, well-stocked and in a high state of cultivation.”

Occupants of Lye End House		
1840	John Woolley	Samuel Hills
1851-61	Elizabeth Chapman	James Fisher
1862-67		
	Fisherman's Rest ?	
1908-10	Charles Edwin Young	
1911-26		Samuel Smith
1930-36	Miss Robinson	Miss Rose Beatrice Pole
1939	Edward Godfrey Masters	
1942	Miss Edith Ellen Scurr Barton	
1945	Ronald Dudley Farrington	
1945-47	John Humphrey Sears	
1949	M M Hanson	
1951-52	Barbara H Ellis	
1952-53	Alfred Emery	
1955-81	Patrick Cornelius Cahill	

⁵¹ *St John's Edwardian Fete Programme, 1973 – Reminiscences of St John's*



Figure 112. Lye End House, 2016

Railway Cottages

Railway Cottages are situated alongside the railway just to the East of the footbridge leading to the Woking Golf Club. They were constructed, between about 1895 and 1902, by the London & South Western Railway, for use by members of their staff.

No. 1 Railway Cottages was built south of the railway and appears on the 1970 OS plan. It was originally known just as Railway Cottage. The first confirmed occupancy record is in 1884, when George Cook was accidentally killed, whilst working on the railway line at Stoughton.

FATAL ACCIDENT.—We regret to record a fatal accident to an inhabitant of this locality. On Thursday morning, a man named George Cook, of Railway Cottage, St. John's, was engaged with a number of platelayers near Stoughton bridge, Guildford. An engine was observed to be coming from the direction of Guildford, and the men moved off the line to allow it to pass. Cook went to pick up a tool, and was warned several times to get out of the way, but he failed to do so, and was run over and terribly injured. He was immediately conveyed to the Royal Surrey County Hospital, where he received every attention. The poor fellow did not regain consciousness, however, and died shortly after his admission. The explanation as to the accident is very simple. The portion of line where the accident occurred is very straight, and anyone standing on the permanent way and looking at an approaching engine might imagine that it was scarcely moving. Deceased had not been long at the work, and probably thought the engine was not so near at hand.

Figure 113. *West Surrey Times*
22 March 1884

The other cottages were north of the railway; they are now numbered 2-5 from east to west, with No. 5 being nearest to the footbridge. Originally they were known as 1-4 Railway Cottages, whilst the other was still known as Railway Cottage.

The 1895 OS map shows only the semi-detached pair, No.s 2 & 3 (originally 1 & 2), which were built in about 1893. Another semi-detached pair, No.s 4 & 5 (originally 3 & 4), shown on later maps, were built later. They are not recorded in the 1901 census but are in the 1902 Woking Rate Evaluation so were presumably built in 1901/2.



Figure 114. Modern map showing 2-5 Railway Cottages

It appears to have been after the Second World War that Railway Cottage was numbered as 1 Railway Cottages and No.s 1-4 became 2-5. No. 1 Railway Cottages was demolished in the 1950s.

Occupants of Railway Cottage	
1884	George Cook, plate-layer
1897-1924	William James Cook, foreman platelayer
1926-39	Thomas West, permanent way labourer
1945	Ellen West, widow
1946-51	Albert E West
1953-54	Eliza West

2-3 Railway Cottages

Occupants of 2-3 Railway Cottages		
1895		James Henry White, signalman
1896-97	William Spooner	
1899-1902	Samuel Spooner, signalman	George Miller
1905		Ernest Ewart Young
1907		John Skinner, railway porter
1908-26		Mrs Mary J Skinner
1933-37	Percy A T H Chown	
1939-47	Ernest F Rainbow	
1950	Frank H Warren	

1956	<i>vacant</i>	
1961	Frederick H Glanville	
1963		T A G Palmer
1967	W Edwards	Derek V Gane
1974-78	Terence W Edwards	
1979-81		



Figure 115. 2-3 Railway Cottages 2023

4-5 Railway Cottages

Occupants of 4-5 Railway Cottages		
1902-08	Thomas Nutcher	William Henry Willoughby, railway lengthman
1911-28	Arthur J Hutchings, railway goods foreman	
1933-39	Burrice William Leggett	
1945-81		Samuel H Pitts



Figure 116. 4-5 Railway Cottages 2023

1 & 2 Lye View Cottages

1 & 2 Lye View Cottages were built in about 1890 by Edward Newman, a builder, who had moved to St John's, from Battersea, in about 1888.

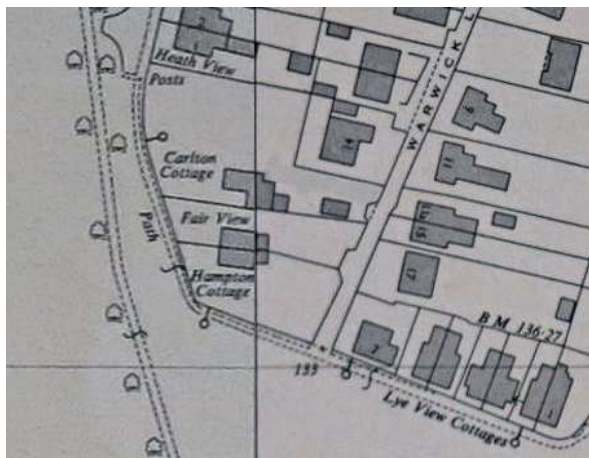


Figure 117. From 1967 OS map

They comprised a pair of semi-detached houses. No.s 3 & 4 were built in about 1896, and then 5-7 some ten years later. When Edward died, in 1915, all seven cottages were put up for auction; they were described as having a rental value of £124 16s per annum.

No.s 5 & 6 were built between 1 & 2 and 3 & 4. The cottages were thus originally numbered 1,2,5,6,3,4,7 as shown in the 1917 street directory.

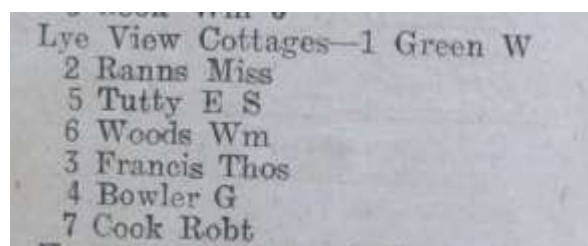


Figure 118. From 1917 street directory

Occupants of 1 & 2 Lye View Cottages		
1891	James Burchett	John G Fillimore
1898-99		Henry Fillimore
1901	Sarah A Daborn	Leonard Skipper
1904-05		George Prout
1907-14	Edgar Newman	Thomas Cranham
1915	Robert Chalcraft	
1916-18	William Green	Agnes S Ranns
1921-28		Boaz G Huggins
1933-39	Mrs Alice Cook	Mrs Emma Huggins
1945		Edwin Collyer
1947		H B Platter
1951		Alice Campbell
1956	M Fisher	
1961	Ann Hawkins	Edith M Weedon
1963	<i>vacant</i>	
1967	Michael R Webb	
1968-73		
1974-75		Raymond P Tyrrell
1978	David C E Barclay	



Figure 119. Lye View Cottages, 2023

3 & 4 Lye View Cottages

No.s 3 & 4 Lye View Cottages were built in about 1896 and were originally numbered 1 & 2.

Occupants of 3 & 4 Lye View Cottages		
1901	Albert E Dicker	Ernest E Eastman
1904	Albert Ernest Skilling	John Legg
1905-07		
1909	George Saunders	Charles Sermon Hobbs

1911	John Molyneux	
1913-18	Edward Samuel Tutty	George J Bowler
1921	William Henry Iverson	William Callingham-Woods
1925-28		Harry Reginald Bramall
1933		William Smith
1934		
1936		Ernest H Errett
1939-47		
1950-78	John MacPherson	
1979-81		

5 & 6 View Cottages

No.s 5 and 6 Lye View Cottages were a third pair of semi-detached houses, built in about 1906, the first occupants being listed in the 1908 Woking directory.

Occupants of 5 & 6 Lye View Cottages		
1907	Mrs Davis	G Barker, G
1909-11	Edward Samuel Tutty	Arthur Gibbons
1913	James Giles	
1918	Thomas G Francis	William Calling
1919-47		George G Bowler
1951	Mary L Burrows	
1955-67	W T Cox	
1968-73		
1974-78	Marcelle Cox	Elsie A Bowler
1979-81		

7 Lye View Cottages

No. 7 Lye View Cottages was the last of the seven to be built, in about 1910 (the first occupant, Edward Howard is shown living there in the 1911 census). Unlike the other Lye View Cottages, it is a detached dwelling.

Occupants of 7 Lye View Cottages	
1911-14	Edward John Howard
1918-28	Robert Cook
1933-39	William Green
1945-47	Mrs Sarah A Green
1951-67	Augustus R Woods
1974	Violet M Woods
1977	Nicholas S Turnbull

Hampton Cottages

Hampton Cottages are a semi-detached pair and were built in about 1890. From about 1950, No. 1 Hampton Cottages has been known as Fairview, whilst No. 2 is known as Hampton Cottage.

Fairview has been extended to the north side, nearly doubling its size.

Occupants of Hampton Cottages		
Fairview		Hampton Cottage
1891	George Collyer	Albert Jackson
1899		J Dodd
1901-05		Harriett Dodd
1907-16		
1916-17	Mrs Collyer	Charles Richard Shurven
1918-36	Mrs Annette Brown	
1939		
1945	Matthew J Langley	John Dillon
1951-56	Stanley R J Stent	
1961-78	Dennis D Bloomfield	



Figure 120. Hampton Cottages, 2023

Carlton Cottage

Carlton Cottage was previously known as Welcome Cottage or The Welcome. Welcome Cottage was built as a detached cottage in the mid-1880s. It was renamed to Carlton Cottage, by George Northcott, in about 1932.

More recently it was renamed Poppy Cottage.

The original cottage has been extended to the north side (left in Figure 121) and to the south-west corner.

Occupants of Carlton Cottage	
1885-89	John Sidney Francis
1889-95	Henry Burchett
1897-99	Albert Jackson
1901	Henry Turner
1904-07	George J Reader
1908-11	Albert Ernest Skilling
1913	John F Hampton
1914-28	John Henry Hayball
1932-75	George E C Northcott
1977	Donald R Adams



Figure 121. Poppy Cottage, 2025

Heathview

Heathview is a pair of semi-detached cottages built in about 1903.

Occupants of Heathview		
1903	John Holloway	
1904-05		
1908-28	Henry Strudwick	Charles Redway
1933-36	Maurice R Stevens	
1939-51		
1956-67	M M J Stevens	
1974	Trevor Fox	
1977-78		Anthony J Emerson



Figure 122. Heathview, 2023

Linden Cottage

Linden Cottage is one of a pair of detached cottages, along with Holly Cottage, built in the late 1880s.

In recent years, Linden Cottage has been extended to the ground-floor front, chimneys have been removed and larger windows installed on the first floor (see Figure 123).

Occupants of Linden Cottage	
1888-91	John Foster
1897-1901	Walter H Jackman
1904	Thomas Burchett

1907	Andrew Mansell
1911-16	Arnold Collyer
1916-21	Frederick Boakes
1925-56	Mrs Rosa J Boakes
1961-78	Ethel R Arkell



Figure 123. Holly Cottage (left) and Linden Cottage, 2022

Holly Cottage

Holly Cottage is one of a pair of detached cottages, along with Linden Cottage, built in the mid-1880s.



Figure 124. Holly Cottage, 1950s?

Occupants of Holly Cottage	
1891	William H Hawthorne
1895	Harry Theodore Roads, bricklayer
1896-1900	Charles Bigwood
1901	Henry Moulding
1904-08	William Pullen
1911	Silas Hills
1913-17	William Rose
1918-21	William F Hall
1925-63	Charles A Redway
1967-78	Dennis M Bannister

Charles Redway

Charles Redway was born in 1851 in Islington, London. He moved to the Woking area in about 1890, establishing a butcher's shop in Knaphill. In 1904, he moved from Hermitage Road to 2 Heathview at St John's Lye.

The 1911 Rating Valuation shows that, at that time, he owned, all the houses from Holly Cottage to Lye View: Holly Cottage, Linden Cottage, 1 & 2 Heathview, Welcome Cottage, 1 & 2 Hampton Cottages and 1-7 Lye View Cottages.

Charles Redway died in August 1937 and was buried in Brookwood Cemetery.

Works

After the Second World War, an industrial plant was built, in about 1948. The first occupier, in 1949, was St John's Products Ltd, who produced pressed aluminium work. They were joined on the site, in 1950, by Crater Precision Ltd, switch manufacturers. There is no mention of St John's Products after 1950 and it is possible they merged with Crater Precision.

Crater Precision Ltd moved in 1958/9 to Lower Guildford Road and changed name to Crater Controls Ltd in 1964.

Crater Precision was superseded in 1959 by Miniature Electronic Components (M.E.C.) Ltd. M.E.C. Ltd had facilities at St John's Lye and Manor Way, Old Woking.

In 1962 and 1963, M.E.C. Ltd were granted exemptions to the

MINIATURE ELECTRONIC COMPONENTS LTD.

A vacancy exists for a

SECRETARY TO THE BUYER

Good shorthand and typing essential. 25—40 years. Must not be afraid of hard work and capable of some record keeping and filing. An important and interesting job for the right person.

Applicants should write to Mr. A. Muirhead.

FEMALE SUPERVISORS

Due to expansion, M.E.C. Ltd. have vacancies for Female Supervisors. Applicants must have been in charge of female labour carrying out assembly operations in a factory manufacturing light electrical goods. The hours of work are from 8.45 a.m. to 5.15 p.m. The scale of pay is between £10 10s. 0d. to £12 10s. 0d. per week, and only those with previous experience in supervising posts should apply, in writing in the first instance, to the Production Superintendent.

THE LYE, ST. JOHN'S, WOKING, SURREY

Figure 125. M.E.C. Ltd advertisement 1963

Factories Act 1961 with regard to the employment of women and young persons.⁵²

In about 1965, M.E.C. Ltd took over the two Mervyn facilities in Copse Road (see pages 62 and 59) and, in about 1968, left the St John’s Lye premises.

Since 1977, when it was established, Woking Print has occupied the site.

Occupants of industrial site	
1949-50	St John's Products Ltd, aluminium press work
1950-58	Crater Precision Ltd
1959-68	Miniature Electronic Components (M.E.C.) Ltd.
1977-	Woking Print



Figure 126. Woking Print, 2022

1 Lye

In about 1960, two retail units were built next to Dudley House (see Vol 1). Of these, one faced onto St John’s Road; the other towards St John’s Lye. The one that faced onto the Lye had the address of 1 Lye. The first occupant was Edward E Bottom, greengrocer.



Figure 127. Edward Bottom’s shop, 1968

The shop had been occupied by Heaters Bakery since 1990. In 2024, Heaters was taken over by the Christmas Bakery of Worplesdon.

⁵² *The London Gazette* 11 December 1962, 10 December 1963
Page 98

Occupants of 1 Lye	
1968-70	Edward E Bottom, greengrocer
1990-2024	Heaters Bakery
2024-	Christmas Bakery



Figure 128. 1-2 Lye, 2019

2 Lye

In about 1990, a third retail unit was added next to the two already adjacent to Dudley House.

Occupants of 2 Lye	
1990-96	Body Lines
2008-12	Equilibrium, beauty salon
2015-22	Vanity House

WARWICK LANE (EAST SIDE)

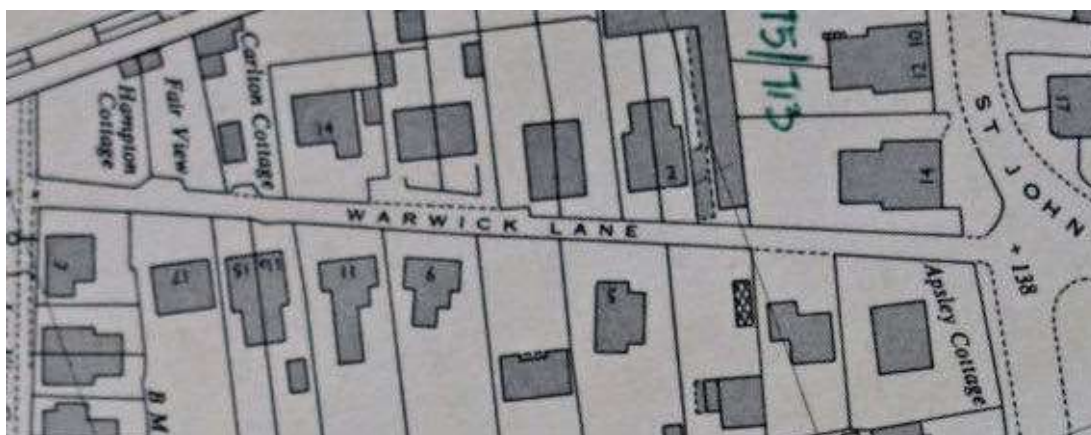


Figure 129. Warwick Lane from 1967 OS map

On the 1840 Tithe Map⁵³, the area where Warwick Lane now is was a number of strip fields (plots 1521-1526), owned and occupied by the Churchwardens and Overseers of the Poor of Woking.

No. 1 The Keep

No. 1 Warwick Lane was built in the early 1970s. The house is called The Keep.

No. 3

The 1968 and 1969 street directories show No. 3 as 'new house' and vacant, so it was presumably built in 1967. Originally called Tally Ho, the house is now named Little Ellingham.



Figure 130. Little Ellingham

⁵³ SHC 6198/13/108, *Tithe apportionment for the parish of Woking*, December 1841

5 - Sunnyside

Sunnyside was built in the 1890s. The first occupant, Henry Guttridge, lived there for 36 years, from 1895. Arthur Hardy and his family then occupied the house for the next thirty years.

Occupants of Sunnyside	
1895-1931	Henry Guttridge, retired gardener
1932-45	Arthur Hardy, cake maker & salesman
1945-61	Mrs Mabel W Hardy
1963-66	P F F Van Reysen
1967-74	Alexander Duff
1975-79	Michael Powell



Figure 131. Sunnyside

7 - Lye Cottage

The 1968 street directory shows Lye Cottage as 'new house' and vacant, so it was presumably built in 1967. The first occupant was Philip K Young, who lived there until the mid-1970s.



Figure 132. Lye Cottage

Fern Cottage

Fern Cottage is a detached house, built in 1889, as a pair with May Cottage; both have the date picked out in bricks on the front. They were the first two houses constructed in Warwick Lane. The first occupant, George Strudwick, moved in, in 1890. He and his wife (later his widow), Betsy, lived there for over sixty years. Thereafter it was occupied by their daughters, Edith and Florence.

Occupants of Fern Cottage	
1890-1929	George Strudwick, postal service
1929-51	Mrs Betsy Strudwick
1951-79	Miss Edith Lottie Strudwick
1981-83	A G Hunter

May Cottage

May Cottage is a detached house, built in 1889, as a pair with Fern Cottage; both have the date picked out in bricks on the front. They were the first two houses constructed in Warwick Lane.

The first occupant, James Gosden, moved in, in 1890. After James's death in 1924 and that of his wife, Mary, in 1928, the cottage passed to their eldest daughter, Jane, who had married Alfred Kimber. Following the deaths of Alfred and Jane, Jane's sister, Maud, lived in the house until 1955. It was thus in the same family for 65 years.

Occupants of May Cottage	
1890-1924	James Gosden, bricklayer
1924-28	Mary Anne Gosden
1930-42	Alfred Kimber, bricklayer
1942-50	Mrs Jane Louise Kimber
1950-55	Maud Louise Gosden
1956	<i>vacant</i>
1959-60	Leonard Floyd
1960-67	Annie A Floyd
1972-83	Douglas F Errett



Figure 133. Fern Cottage & May Cottage, 2023

Thorne Cottages

Thorne Cottages are a pair of semi-detached houses, built, probably, in the mid-1890s.

In 1909, John Hampton, a nursery gardener, moved from Jubilee Cottage in Church Road into No. 1 Thorne Cottages. John died in 1910 and his widow, Martha, in 1913. The cottage passed to their daughter, Flory, who, in 1912, had married William Henry Jordan, an ex-soldier with the Coldstream Guards.

When the Great War broke out, William, having remained as a reservist, was immediately called up. With his regiment, he was posted to the Western Front, where, on the 29th October 1914, during the first battle of Ypres, he was reported as 'missing in action'. Flory received confirmation of this on 19th February the following year. The exact circumstances of his death were never known. Flory remarried in 1920 – to William Bowley. Flory lived in the house almost continuously from 1909 until her death in 1961.

Between the publication of the 1934 and 1937 street directories, 1 Thorne Cottages was renamed as Thorn Cottage and No. 2 was renamed to Thorndene.

Occupants of Thorne Cottages		
1897-98	Silas Hills, gardener	
1899		
1901	James A Wilson, engine fitter	George James Reader, painter
1903	Mrs Jennie Thomas	
1906-07		
1909-10	John Hampton, nursery labourer	
1910-13	Martha Hampton	William Fennell, plumber
1912-13	John Hamilton	
1914-15	George Frederick Tillman	
1915-20	Mrs Flory M Jordan	
1920-24	William Frederick Bowley, plumber	
1925		Gilbert H Green, overseer at post office
1925-51	Mrs Flory M Bowley	
1956-61		
1967-79	Stella E Bowley	
1980-81		



Figure 134. Thorne Cottages 2023

Warwick Lodge

Warwick Lodge is a detached house, built in about 1892. The first occupant was Henry Moulding, butcher. It is unlikely that he built it though. From as early as 1902 until at least 1915⁵⁴, Warwick Lodge was owned by John Moverly Sharp, solicitor, of Criterion Chambers, Jermyn Street, London.

⁵⁴ SHC, 6198/137a, *Rates: Valuation List Woking 1902*; SHC, CC802/34/4, *Surrey, England, Electoral Registers, 1915*

For the majority of the time from 1900 until the Second World War, Warwick Lodge appears to have been rented out as two separate tenements.

Today Warwick Lodge is 5 bed-room detached house with three bathrooms, that sits in a plot of 570 square metres.

Occupants of Warwick Lodge		
1892-99	Henry Moulding, butcher	
1901	Henry Burchett, labourer	Mrs Mary Randolph
1902-10	George Ernest William Sutherland	
1911	Henry Burchett, labourer	
1912-15	<i>vacant ?</i>	<i>vacant ?</i>
1915-16		
1916-17	Walter Hunt	
1918		Meshack Pike, soldier
1919-25	William Henry Arthur	
1926-28	Aubrey G Davis	Meshack Pike, soldier
1929	James Gartry	
1930-32		Leonard Cutt
1932-33	<i>vacant</i>	<i>vacant</i>
1933-34	Percy George Gooch	Donovan Charles Cobbett
1934-36	William Ernest Daborn	
1936-38		John Wye
1938-75	Sidney E Durrant, brewer's drayman	
1977-78	Emily Durrant	



Figure 135. Warwick Lodge 2023

WARWICK LANE (WEST SIDE)

No.s 2 & 4 – 4 & 3 Church View Cottages

3 and 4 Church View Cottages are a pair of semi-detached cottages and were built in about 1920, some thirty years after 1 & 2 Church View Cottages.

From 1948, the name Church View Cottages was dropped from No.s 3 & 4 and they became No.s 2 and 4 Warwick Lane.

Occupants of 3 & 4 Church View Cottages		
1928	Hampshire / Stevens	
1933	<i>vacant</i>	F A Harding
1935	J O Jones	George Thorn
1939		Herbert H P Rose
1947	H W Smith	
1956-67	James D Wayte	
1974-78	Harry Tyerman	Peter D Finch



Figure 136. 3 and 4 Church View Cottages 2023

No.s 6 & 8 – 2 & 1 Church View Cottages

1 and 2 Church View Cottages are a pair of semi-detached cottages and were built in about 1892.

In 1893, the houses were sold at auction, both with sitting tenants. The cottages were described as having four rooms; presumably a kitchen and living room downstairs and two bedrooms upstairs.

The 1897 and 1902 Woking rate books show a Mrs Chown owning the two cottages.

MR. G. A. McEWEN begs to announce that he has been favoured with instructions to offer for Sale by Auction, at the Prince of Wales Hotel, St. John's, Woking, on FRIDAY, the 14th of August, 1893, at 5 o'clock in the evening, the following well-built and conveniently situated FREEHOLD COTTAGES.

Lot 1.—A pair of Detached Cottages, facing the common at St. John's, Woking, and known as Holly and Linden Cottages, each containing sitting-room, three bedrooms, kitchen, scullery, w.c., and other conveniences, good gardens and plentiful supply of excellent water. This property is admirably adapted for summer residence, as common rights over about 40 acres is held by the owner.

Lot 2.—A pair of Semi-detached Cottages in rear of above, and named 1 and 2, Church View, facing a road connected with the main road to Woking Station. The cottages contain four rooms, with gardens, and the usual conveniences. The above properties are situated in the centre of this rapidly improving neighbourhood, are all let to respectable tenants at rentals producing £54 12s. per annum, and are within a few yards of St. John's Church, Board Schools, and post-office. An omnibus passes four times daily, conveying passengers to and from Woking Station.

Figure 137. *West Middlesex Herald*
22 July 1893



Figure 138. 1 and 2 Church View Cottages
2023

Occupants of 1 & 2 Church View Cottages		
1894-97	Alfred Mant	Daniel Goodyear
1899		George Sandon
1901	Robert Matthews	Mrs Charlotte Sandon
1902		
1903		Alfred Kimber
1904-11	Albert John Weller	
1913-20	Edward C May	
1925	William Henry Jones	
1928-30	Thomas G Jones	Aubrey G Davis
1933		John Charles Renshaw
1935		F A Harding
1939-45		Doris Luxton
1947-68		Samuel Luxton
1969-74		
1977-78	Aileen Barclay	Doris F Luxton



Figure 139. Warwick Lodge 2023

No. 10 - Wayteover

Wayteover is one of a pair (with Ormlie) of semi-detached houses built in 1954.

No. 12 - Ormlie

Ormlie is one of a pair (with Wayteover) of semi-detached houses built in 1954.

No. 14 – The Bungalow

The Bungalow is a detached single-storey house, built in 1954. Today it is named Hazelview Cottage.

No. 22 – Trelye

Trelye is a five bedroom detached house which was built in the 1970s.

ST JOHN'S RESIDENTS PHOTO GALLERY



William Charles Anstis
1905-1996



Sir John A F Aspinall
1852-1937



James Babbage
1862-1951



Elizabeth Hannah Howard
Balchin 1863-1944



Lady Betty Balfour 1867-
1942



E A Barbour 1883-1966



Ernest Frederick Bascombe
1929-1993



Elizabeth Mary Barnes



Edith Ellen Scurr Barton
1854-1942, 1868



Frederick George Bascombe
1904-1982



Cecil E P Bearman
1871-1956



Francis Bickley
1828-65



Mabel Winifred Boorman
1887-1966



Revd Charles B Bowles
1807-1885



Russell F C (1878-1938) &
Annie L (1877-1957)
Bowsher



Frederick Boylett
1888-1918



Arthur Henry Brodribb
1879-1939



Henry Burchett (1856-
1944) & 3 of his daughters



William John Butt 1841-1919



Patrick Cornelius Cahill
1908-81



Thomas Henry Carpenter
1886-1916



Evelyn Maud Jane Chubb
1888-1959-



Ernest John (1896-1969) & Georgina (1899-1989) Candy



Maria Chitty late Waterer
née Stevens 1808-1890



Henry A Chowney
1886-1917



Sir William Ovens Clark
1849-1937



Mabel Annie Coleman
1896-1921



Ernestine Rosa Cook
1869-1955



Joan Cooper 1920-



Philip Cooper
1877-1971



Percy A W (1881-1943) &
Catherine Meriam Collyer
(1880-1951)



Simon Philip W Corbett
1914-76



James Laidlaw Cross
1846-1937



John E C Cross
1873-1967



Albert Edgar Dale
1909-



Alfred Charles Dawson
1896-1920



Ivor John (1906-2002) & Dorothy R
Cunningham (1908-95)



Albert E Devereux
1897-1916



John Dalton Deverell
1905-82



Henry Herbert (1881-1950)
& Emma A (née Temple)
(1882-1960) Ellis



Mary Anne Chapman (née
Eales)
1846-96



Muriel Ethel Faulkner-
Wilkinson 1882-



Edward James Field
1888-1918



John Alexander Field
1884-1917



Charlotte Maud Geary
1895-1966



William James Godfrey
1876-1916



Henry Goodyer
1879-1967



Thomas W Graham
1872-1959



Christopher C Gray
1881-1918



William Green
1871-1921



Leonard Mundy Gribble
1877-1954



Herbert Otho Hamilton
1892-1915



Revd Joseph Montague
Harris
1865-1964



Ellen Harvey
1842-1932



Charles Basil Hawkes
1896-1915



Harry Urmson Hayes
1896-1915



Hilda Dorothy Hollebon
1895-1981



Leonard Hills
1849-1932



Edward John Hodkinson
1886-1924



Arthur A Howell C.M.G
1862-1918



Arthur Gregory(1878-1953)) & Alice (née
Yeatman) (1893-1938)Howard



Evelyn Hurt
1920-80



Albert E (1864-98) & Mabel (1865-1945)
Inwood



George Jackley
1884-1950



George Jackman 1801-69



George Jackman junior
1837-87



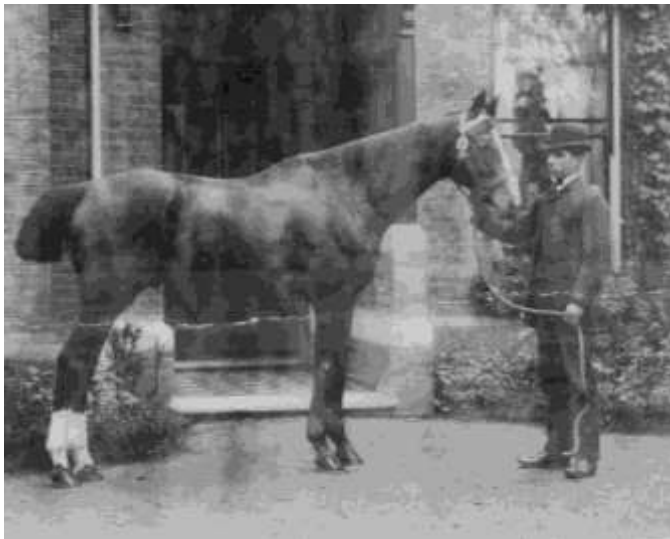
Percy Jackman
1872-1934



George Jackman & staff c1880



Arthur George Jackman
1866-1926



Walter Henry Jackman 1870-1956



Albert Jackson
1836-1902



Mabel (1865-1945) & Daniel (1865-1940) Jelly



Ellis Jeffreys (1872-1943)



William Henry Jordan
1886-1914



John Alfred Knight
1882-1916



George Henry Kingham
1856-1946



Roderick L Keller M.C.
1892-1918



James George Kurn
1893-1916



George H T Kingham
1892-1965



Frederick William Lintott



William Absalom Lock
1895-1915



Frederick Oswald
McDonnell
1890-1972



John Doran MacDonald
1867-1916



William Kenaz Marriott
1847-1927



Joseph Martyr
1829-1916



Roderick George McLeod
1892-1986



George Edgar May
1885-1975



George Edgar & Louisa (1884-1968) May



Maria Maycock
1846-1911



William A May 1895-1918



Charles John Albert Mead
1895-1989



Mrs Lily Moore
1899-1962



Owen Ernest Moore
1867-1947



David Stuart Mitchell
1880-1918



Marmaduke R H Morley
1894-1916



Walter William Moulding
1882-1917



Marjorie Evelyn Nevile
1906-91



Cynthia Irene Norfolk
1907-86



Revd Frederick James
Oliphant
1845-1911



Andrew Pears
1846-1909



William Sydney Penley
(1853-1912) with his son
(c1900, probably at St
James' House)



Ernest William (1875-1949)
and Susan (1874-1953)
Piesse



Stanley Percival 1820-190



Stephen Pannell (1878-1917) and family



Edward Pudney
1882-1944



Elizabeth Pudney
1882-1972



Arthur Rathbone
1889-1964



Henry, Philip, Joseph & Charles Redway c.1880



Sir William H Raeburn
1850-1934



Charles Renshaw
1841-1905



Rhoda (née Gardner) (1872-1951) & Rennie Ross
(1869-1947) Rogers



Fred, Emily, Job, Rosa & Jane Savage



Job Savage (1845-1925) and his wife, Jane
(1849-1942)



George Bellas (1855-1931) & Rosina (1857-1940) Savage



Catherine M Simmonds
1883-1951



John Rookley 1881-1917



Edward Stephen Spooner 1881-1917



George Barker Searle (1823-1905)
pictured outside of Belmont c1901



Maj Victor John Senior M.C.
1916-2007



George Barker Searle
1823-1905



Herbert Skelton (1871-1921)



Walter Charles Slocock
1854-1926



Ethelbert (1880-1963) &
Elspeth (1888-1977)
Smithers



William Buchanan Smellie
1902-86



Stephen(1877-1960) & Emily (1881-1967) Spooner



Harry (1887-1964) & Mary
(1885-1971) Spooner



Harry Spooner in his Morris Oxford



Stephen & Emily Spooner, May & Nora, the Jones brothers



Harold Rolleston Stables
1886-1914



Caleb Stevens 1843-1900



Sir Henry Thompson
1820-1904



Hubert Maitland Turnbull
1875-1955



John Russell Townsend
1896-1916



Valdo Brothers



Col Eden Vansittart D.S.O.
1856-1936



Honorah Walton
1907-84



Walter J Warrell-Bowring
1893-1916



Maria Waterer
1831-88



June Stuart Fleming Wilkie
1922-89



William F R Webster
1880-1949



Maj Gen Michael Edward
Willoughby C.M.G C.B. C.S.I.
1864-1939



Marcus Warren Zambra
1849-1914



Marcus William Zambra
1877-1952



St John's Football Club, 1912-13



St John's Football Club, 1922-23 - the season in which they won six trophies



St John's Football Club, 1956-57



St John's Football Club, 1958-59



St John's Football Club, 1960-61

ACKNOWLEDGEMENTS

British Newspaper Archive

Surrey History Centre

National Archives, Kew

London Metropolitan Archives

Iain Wakeford

1:2500 Ordnance Survey Plans for 1871, 1896, 1914, 1935, 1965 and 1976 have been used extensively

Wikipedia

www.stjohnsmemorialhall.co.uk

BIBLIOGRAPHY

- 'A Guide to the Industrial History of Woking and its Borough', Iain Wakeford, published by Surrey Industrial History Group, 1995.
- 'A History of Woking', Alan Crosby, published by Phillimore & Co. Ltd, 2003.
- 'Around Woking', Lyndon Davies, published by Tempus Publishing Ltd, 2004.
- 'Bygone Woking', Iain Wakeford, published by Phillimore & Co. Ltd, 1983.
- 'Jackmans of Woking', Pamela Gauntlett, published by the author, 1995.
- 'Memories of Woking', published by True North Books Ltd, 2000.
- 'London's Lost Route to Basingstoke', P A L Vine, published by Alan Sutton, 1998.
- 'Nurserymen to the World', E J Willson, published by the author, 1989.
- 'Surrey in the Sixties', Mark Davison & Ian Currie, published by Frosted Earth, 1994.
- 'Surrey in the Seventies', Mark Davison & Ian Currie, published by Frosted Earth, 1995.
- 'Wok's Tribe A Woking Miscellany', published by Woking Association for the Single Homeless, 1984.
- "Woking: An Urban Centre in the London Region", T Rhodes, a B.A. Dissertation, 1962.
- 'Woking & District A Dictionary of Local History', published by Martin & Greenwood, c.1960.
- 'Woking & Ripley With their Surroundings', Homeland Handbook, 1905.
- 'Woking as it Was', Iain Wakeford, published by Phillimore & Co. Ltd, 1985.
- 'Woking Buses 1911-1939', Laurie James, published by Amberley Publishing, 2012.
- 'Woking Past', Arthur Locke, published by Woking Urban District Council, 1930 (reprinted 1980).

INDEX to Volume 2

A

Abbotsleigh, 11
Adams, Alfred E, 58
Adams, Donald R, 94
Addlestone, 35
Adelaide Villas, 58
Akehurst, Christopher, 58
Albany Café, 3
Albany House, 2, 3, 4
Alfred Dimon, 43
Allen, George Hubert, 61
Allen, George S D, 61
Amstel Way, 18, 19
Andrews, George, 58
Ansell, J C, 53
Ansell, James, 3
Anstis, William Charles, 109
Anstruther, Lady, 32
Aquarius, 34, 35
Arkell Ethel R, 96
Arlington, 34, 35
Armstrong, Arthur William, 36
Armstrong, James M, 48
Arthur, William Henry, 105
Ashley Road, 40
Aspinall, Sir John Audley Frederick, 109
Astill, Henry, 12
Atkinson, J, 25
Attfield, Mrs Sarah Julia, 30
Avison, Malcolm L, 21
Avondale, 28
Aylesbury, 19
Aylett, Dennis, 28
Ayres, James Thomas, 52
Ayres, Mrs Alice, 52

B

Babbage, James, 109
Bacon, Ethel, 12
Baigent, Wilfred N, 25
Bailey, Edward, 34
Baker, Benjamin, 82
Baker, Mrs Ellen, 43
Balchin, Elizabeth Hannah Howard, 109
Balfor, Lady Betty, 109
Balfour, Arthur, 42
Balfour, Gerald, 42
Balfour, Lady Betty, 41, 42
Balwave, James G, 58
Bank of England, 41, 42
Bannister, Dennis M, 97
Barbour, E A, 109
Barclay, Aileen, 107
Barclay, David C E, 91
Barker, 92
Barnes, Elizabeth Mary, 109
Barnes, George, 15

Barnett, David P, 43
Barnett, Ernest F, 84
Barnett, Mrs, 15
Barnett, Mrs Lucy, 80
Barnett, Thomas, 80
Barney, Mrs Lucy M, 84
Barney, William, 81, 84
Barrack Cottage, 20, 21
Barrack Path, 1, 4, 13, 19, 20, 24, 38, 39, 57, 74
Barrymore, Edmund Allison, 21
Barton, Miss Edith Ellen Scurr, 86, 109
Bascombe, Frederick George, 110
Basingstoke Canal, 44, 45, 72, 79, 81, 82
Basingstoke Canal Company, 44
Bathurst, Anthony, 45, 46
Battersea, 90
Battle of Inkerman, 19
Battrick, Edward V B, 33
Bayliss, Peter, 28
Beake, George J, 12
Bean, George, 2, 9
Bean, Mrs Harriot, 2, 9
Bearman, Cecil Edwin Percy, 34, 110
Bearman, Jephthah, 33
Bearman, Thomas, 14
Bearman, Thomas White, 34
Belmont, 125
Beminster, Arthur, 12
Bennett, Charles W, 18
Bennett, Leonard John, 25
Berry, D A, 52
Bethune, Divie, 12
Bickley, Francis, 110
Bickley, Mrs Harriet, 31, 34
Biddle, George, 17, 36
Bide, Samuel, 85
Bides Cottages, 72, 85, 86
Bigwood, Charles, 97
Bigwood, George, 43
Bigwood, Percy James, 35
Binsley, R, 42
Bishop, William, 14
Blake, Albert G, 53
Blake, Kenneth D, 83
Blalock, James, 36
Bland, Michael A, 3
Blellock, Mrs Margaret, 35
Bloomfield, Dennis D, 93
Blower, A J, 48
Blunden, Miss Kathleen Margery, 36
Blunden, Mrs Wilhelmina, 36
Blunden, Robert, 36
Boakes, Frederick, 96
Boakes, Frederick Thomas, 11
Boakes, Mrs Rosa J, 96
Body Lines, 99
Bolton, Elizabeth, 15
Bolton, Thomas, 48

Bond, Miss Emily, 71
 Bond, William Charles, 49
 Boorman, Mabel Winifred, 110
 Bosley, S D, 52
 Bottom, Edward E, 21, 98, 99
 Bourne, Walter, 22
 Bowden, Joseph William, 15
 Bowers, Mrs Annie, 25
 Bowers, Roy, 15
 Bowers, Walter, 82
 Bowler, Elsie A, 92
 Bowler, George G, 92
 Bowler, George J, 92
 Bowles, Miss, 32
 Bowles, Revd Charles Bradshaw, 68, 110
 Bowley, Mrs Flory M, 104
 Bowley, Stella E, 104
 Bowley, William Frederick, 103, 104
 Bowsher, Annie Louise, 110
 Bowsher, Russell Frederick Charles, 36, 110
 Bowyer, Emma, 38
 Boylett, Frederick, 110
 Boylett, Henry, 84
 Brackendale, 27
 Bramall, Harry Reginald, 92
 Brattle, Wilfred, 71
 Brattle, Wilfred Herbert, 73
 Breeds, Arthur, 53
 Brickfield House, 49
 Briggs, Frederick, 21
 Bright Dental Surgery, 6
 Bright, Albert Edward, 76
 Bright, Mrs Alice Mabel, 76
 Brindly, T, 58
 Brine, James, 35
 Brodribb, Arthur Henry, 110, 111
 Brook, Michael, 28
 Brookwood Cemetery, 97
 Brookwood Lye, 68
 Brown, George, 33, 51
 Brown, Grant R, 18
 Brown, Mrs Annette, 93
 Brown, William John, 33
 Bruton, Iris O, 33
 Buchanan, Ronald M, 52
 Buchanan, Ruth, 52
 Buckland, Jesse C, 48
 Bugler, George R, 62
 Bullen, Maria, 83
 Bullivant, 21
 Bullivant House, 21, 22
 Bullman, Edward, 58
 Bullman, Mrs Phyllis Phoebe, 16
 Bulman, James Walter, 22
 Bulman, Walter James, 22, 23
 Bulman, Walter William, 23
 Bulwer-Lytton, Miss Elizabeth Edith, 42
 Bulwer-Lytton, The Hon. Robert, 42
 Bungalow, The, 18, 22, 23, 29, 54, 108
 Burchett, Albert, 83
 Burchett, Charles, 83
 Burchett, Henry, 110

Burchett, James, 81, 84, 91, 94, 104, 105
 Burchett, Jessie C S, 84
 Burchett, Miss, 83
 Burchett, Mrs Lois, 83
 Burchett, Thomas, 95
 Burchett, William N, 82
 Burgoyne Cottage, 9
 Burgoyne Villa, 9
 Burrows, Mary L, 92
 Burt, Barbara, 84
 Busby, George, 81
 Butler, E M, 73
 Butt, William John, 60, 111
 Butt's Cottages, 60
 Byfleet, 52

C

Cable, John E, 25
 Cable, Mrs Grace Froud, 25
 Cahill, Patrick Cornelius, 86, 111
 Caiger, Edwin, 51
 Calling, William, 92
 Callingham-Woods, William, 92
 Calloway, Mrs Alice, 21
 Campbell, Alice, 91
 Candy, Ernest John, 111
 Candy, Henry, 48
 Candy, Mrs Georgina, 111
 Cannon Brewery, 49
 Cannon, P, 30
 Capstans Wharf, 51
 Carey, Henry, 41
 Carlton Cottage, 94
 Carolyn Close, 78
 Carpenter, Thomas Henry, 111
 Carter, Edward, 33
 Caswell, 28, 29
 Catalpa Development Co. Ltd, 28
 Chadwick, Ernestine Rosa, 38
 Chadwick, James, 38
 Chadwick, Mrs Ernestine Rosa, 38
 Chandler, Charles, 83
 Chandler, William, 55
 Chapman, Elizabeth, 86
 Chapman, Ethel, 43
 Chapman, Frederick H, 43
 Chapman, Mrs Mary Anne, 113
 Cheeseman, Arthur, 17, 81
 Cheesman, C, 48
 Chestnuts, The, 70, 71
 Children's Thrift Shop, 7
 Chinnocks, The, 34, 35
 Chippenham, 49
 Chitty, Mrs Maria, 111
 Chobham, 15, 16
 Chown, Mrs, 107
 Chown, Percy A T H, 88
 Chowney, Henry, 83
 Chowney, Henry Alfred, 111
 Chowney, Isaac, 15
 Christmas Bakery, 99

Christmas Bakery, 98
 Chubb, Evelyn Maud Jane, 111
 Church Road, 103
 Church Street, 85
 Church Street West, 85
 Church View Cottages, 106, 107
 Church, John, 9, 43
 Churchill, Miss, 32
 Churchward, Miss, 32
 Churchwardens and Overseers of the Poor of Woking,
 100
 Churn, James, 36
 Clacey, John, 48
 Clark, Ronald A, 54
 Clark, Sir William Ovens, 111
 Clarke, Thomas, 85
 Clarke, William, 33, 42
 Clements, G E, 3
 Clock House, 71
 Clovelly, 10
 Cobbett, Donovan Charles, 105
 Cockland, Hilda C, 62
 Coinwash, 7, 8
 Coldstream Guards, 103
 Colebrook, Frank, 38
 Colebrook, Miss Marguerite Alice Muriel, 38
 Coleman, Mabel Annie, 112
 Collier, Stephen, 15
 Collins, William, 57
 Collyer, Arnold, 96
 Collyer, Catherine Meriam, 112
 Collyer, Edwin, 91
 Collyer, Edwin A, 84
 Collyer, George, 93
 Collyer, Mrs, 93
 Collyer, Mrs Catherine Miriam, 48, 124
 Collyer, Percy, 43
 Collyer, Percy Arthur William, 61, 112
 Collyer, Percy William Arthur, 48
 Conifers The, 31
 Conifers, The, 31, 32, 33, 35
 Conservative and Unionist Women's Franchise
 Association, 42
 Constable, A, 53
 Conway, A, 25
 Conway, Winifred E, 53
 Cook, Albert, 5
 Cook, Albert Harry James, 5
 Cook, Ernestine Rosa, 112
 Cook, George, 87, 88
 Cook, Leslie L, 54
 Cook, Mrs Alice, 91
 Cook, Robert, 92
 Cook, Robert C R, 33
 Cook, William James, 88
 Cook's Garage, 5
 Cookson, Mrs H, 17
 Cooper, Joan, 112
 Cooper, Philip, 112
 Cooper, Sydney, 26
 Cooper's boat house, 45
 Copse Cottage, 57

Copse Hill Villa, 57
 Copse Road, 1, 37, 42, 45, 52, 55, 56, 57, 59, 61, 64, 65,
 66, 98
 Copsehill Villa, 57
 Corbett, Simon Philip Wolferstan, 112
 Cornerstone, 6
 Cowdery, Henry Thomas, 30
 Cox, Marcelle, 92
 Cox, Violet C, 76
 Cox, W T, 92
 Cranham, Cyrus, 82
 Cranham, Sarah Jane, 82
 Cranham, Thomas, 91
 Cranstock Day Centre, 13
 Crater Controls Ltd, 97
 Crater Precision Ltd, 97, 98
 Craven & Rylance, 5
 Craven, Stuart, 84
 Crawley, Miss Eliza, 21
 Crimean War, 19
 Cross, James Laidlaw, 112
 Cross, John E C, 112
 Crouch, Henry, 34
 Crows Nest, The, 22, 23
 Croydon, 71
 Cunningham, Dorothy R, 113
 Cunningham, Ivor John, 113
 Cutt, Leonard, 105

D

Daborn, Arthur, 9, 43
 Daborn, Edwin, 12
 Daborn, Henry, 22
 Daborn, Mrs Elizabeth Hannah Howard, 22
 Daborn, Sarah A, 91
 Daborn, William Ernest, 105
 Dalby, Philip J, 17
 Dale, Albert Edgar, 112, 113
 Dalvery, James, 39, 40
 Daphne Cottage, 27, 37, 38, 39
 Daphne House, 3, 4
 Davey, Henry, 14, 26, 36
 David Callaghan & Ass., 38
 Davies, Arthur Lloyd, 133
 Davis, Aubrey G, 105, 107
 Davis, Cecil G, 104
 Davis, Mrs, 92
 Davis, William Samuel Thomas, 38, 42
 Dawson, 9, 58
 Dawson, Alfred, 42
 Dawson, Alfred Charles, 113
 Dawson, John, 36
 Dayly, Henry, 9
 Decoretta, 7
 Dench-Layton, Kevin D, 14
 Denyer, Albert Henry, 54, 57
 Denyer, James E, 43
 Denyer, John, 48
 Denyer, John E W, 43
 Denyer, Mrs, 43
 Denyer, S A, 43

Denyer, William, 57
 Deverell, John Dalton, 113
 Devonshire, Alfred, 43
 Dicker, Albert E, 91
 Dillon, John, 93
 Dodd, Harriett, 93
 Dodd, J, 93
 Dorking, 52
 Dorset, 60
 Douglas, Leslie V S, 62
 Douglas, Margaret J, 62
 Downes, Fred A, 53
 Drew, John R, 12
Drummond Arms, Dorking, 52
 Duddy, Anthony D, 53
 Dudley House, 98, 99
 Duff, Alexander, 101
 Dunford, Herbert, 43
 Dunkley, William, 12
 Durrant, Emily, 105
 Durrant, Sidney E, 105

E

Eales, Miss Mary Anne, 113
 Eales, Mrs Celia, 81
 Eales, Peter, 79, 81
 Eastman, Ernest E, 91
 Eaves, D A, 52
 Echlin, Gerald D, 53
 Edwards, Harry, 33
 Edwards, Terence W, 89
 Edwards, W, 89
 Elliot, James, 43
 Elliot, Mrs M R, 43
 Elliott, James Arthur, 22
 Ellis, Barbara H, 86
 Ellis, Charles, 114
 Ellis, Dorothy, 114
 Ellis, Florence, 114
 Ellis, Gertrude, 114
 Ellis, Henry Herbert, 113
 Ellis, James Edward, 114
 Ellis, Millicent, 114
 Ellis, Mrs Emma Amelia, 113
 Emberson P, 8
 Emerson, Anthony J, 95
 Emery, Alfred, 86
 Equilibrium, 99
 Errett, Douglas F, 103
 Errett, Ernest H, 92
 Evans, Beatrice M, 12, 14
 Evans, G, 36
 Evans, Mrs Isabella, 57, 58
 Ewens, Seymour, 53
 Ewens, Vera J, 53

F

Factories Act 1961, 98
 Fairview, 93
 Farley, Edward, 17

Farmer, John Edward, 52
 Farmer, Mrs Irene E, 52
 Farmhouse Pizza, 6, 7
 Farner Ltd, 67
 Farrington, Ronald Dudley, 86
 Faulkner, Frederick, 23, 25
 Faulkner-Wilkinson, Muriel Ethel, 113
 Fenn, James, 82
 Fenn, John, 81
 Fenn, Mrs Jane, 82
 Fenn, William, 79, 82
 Fennell, William, 104
 Ferguson, Alfred Ernest, 76
 Ferguson, Mrs Amy Florence Maud, 76
 Fern Cottage, 102, 103
 Festival Path, 71
 Field, Edward James, 113
 Fillimore, Henry, 91
 Fillimore, John G, 91
 Finch, Peter D, 106
 Fired Frog, 6
 Fisher, Clive R, 17
 Fisher, James, 86
 Fisher, M, 91
 Fisherman's Retreat, 85
 Fishers Hill, 42
 Floyd, Annie A, 103
 Floyd, Leonard, 103
 Foster, Edward, 61
 Foster, Edward Leonard S, 61
 Foster, Ethelbert Leonard, 61
 Foster, John, 95
 Foster, Mrs Agnes L, 61
Foulmire, 40
 Fowler, William, 51
 Fox, Trevor, 95
 Frances, Marion, 21
 Francis, John Sidney, 94
 Francis, Thomas G, 92
 Fraser, Duncan, 43
 Freemantle, Miss Caroline, 12
 Friar House, 60
 Fulcher, Joseph C, 36
 Fury, Ron W, 49

G

Gale, Mrs Sarah A, 35
 Gane, Derek V, 89
 Garage Property Management, 6
 Gardner, Miss Rhoda, 123
 Gartry, James, 105
 George Holton Wanstall, 2
 George Wanstall, 2
 Gibbons, Arthur, 92
 Gibbs, Alfred, 43
 Gibson, Alice E E, 54
 Giddings, George, 41
 Giles, James, 92
 Gilpin, John, 55
 Glanville, Frederick H, 89
 Glenvalley, 53, 54

Glynne, 31, 33, 34
 Goddings, James William Arthur, 16
 Godfrey, William James, 114
 Goldsworth Bridge, 25, 26
 Goldsworth Nursery, 37
 Goldsworth Road, 5
 Gooch, Percy George, 105
 Goodyer, Daniel, 58, 107
 Goodyer, Henry, 114
 Gorsewood Cottage, 69, 76
 Gosden, Henry, 14
 Gosden, James, 102, 103
 Gosden, Mary Anne, 103
 Gosden, Miss Jane Louise, 102
 Gosden, Miss Maud Louise, 102, 103
 Gosden, Mrs Mary Anne, 102
 Gowers, Miss M, 17
 Gowler, Henry, 3
 Goymer, Neil, 26
 Grace, James George, 30
 Graham, Thomas William, 114
 Grainger, Frank George, 41
 Grant, Henry, 62
 Graphic House, 2, 3, 5, 7, 8, 9
 Graves, George, 32, 33
 Graves, Gerald Oliver, 32, 33, 76
 Graves, Mrs Rebecca, 32
 Gray, Christopher Charles, 115
 Gray, Simion, 36
 Greaves, Victor Henry, 52
 Green, Charles, 80
 Green, Douglas Charles, 10
 Green, Frank, 33
 Green, Gilbert H, 104
 Green, John W, 11
Green, Mrs Doris, 45
 Green, Mrs Sarah A, 92
 Green, William, 91, 92, 115
 Gribble, Henry Gardiner, 42
 Gribble, Leonard Mundy, 115
 Guersouille, J C, 28
 Guildford, 49
 Gulton Industries (Britain) Ltd, 59
 Gunn, Victor C, 73
 Gunton, Mrs, 73
 Guttridge, Henry, 101

H

H G Simonds Ltd, 66
 Hadley, Norman James, 15
 Hall, Alfred William, 48
 Hall, Frank, 80
 Hall, Harry, 61, 82
 Hall, Henry, 83
 Hall, Henry A, 80
 Hall, Robert George, 14
 Hall, William F, 97
 Halls, Kenneth, 11
 Halyards, 30
 Hamilton, Herbert Otho, 115
 Hamilton, John, 104

Hampshire (county), 70
 Hampshire (person), 106
 Hampton Cottage, 93
 Hampton Cottages, 93, 97
 Hampton, Harry Ernest, 25
 Hampton, John, 103, 104
 Hampton, John F, 94
 Hampton, Martha, 104
 Hampton, Miss Flory M, 103, 104
 Hampton, Mrs Martha, 103
 Hampton, William, 17
 Hanson, Harold Keir, 73
 Hanson, M M, 86
 Hanson, Mrs Winifred, 73
 Harding, F A, 106, 107
 Harding, George, 82, 83, 84
 Harding, Joe, 83
 Hardy, Arthur, 101
 Hardy, Mrs Mabel W, 101
 Hardy, William, 79
 Harold Villa, 31, 34, 35
 Harris, Revd Joseph Montague, 115
 Harris, William, 33
 Harrison, R, 61
 Hartley, Kenneth G, 41, 42
 Hartley, Miss Dorothy, 42
 Harvey, Ellen, 115
 Haskell, Arthur, 25
 Hawkes, Charles Basil, 115
 Hawkins, Ann, 91
 Hawthorne, William H, 97
 Hayball, John Henry, 94
 Haydon, Thomas, 32
 Hayes, Harry Urmson, 115
 Haygarth, Mrs Alice, 11
 Hazelview Cottage, 108
 Head, Edward, 41
 Heaters Bakery, 98, 99
 Heathview, 95, 97
 Hebbs, Edward, 43
 Hebbs, Mary A, 43
 Hedges, G, 41
 Henshaw, Henry E, 33
 Herbert, Harry Orenzo Matthew, 25
 Hermitage Road, 1, 2, 3, 4, 5, 7, 8, 9, 11, 13, 15, 18, 19, 24, 38, 71, 97
 Hersey, Elijah, 48
 Hill Cottages, 43, 44
 Hill View, 41, 42, 65
 Hill Villa, 41
 Hill, D C, 14
 Hillcrest, 28, 38
 Hills, Leonard, 116
 Hills, Mrs Isabella J, 30
 Hills, Philip, 11, 12, 30
 Hills, Samuel, 85, 86
 Hills, Silas, 97, 104
 Hinde, Mrs G G, 17
 Hirsch, George Philip Jackley, 50, 52
 Hoare, Richard Stanley, 76
 Hobbs, Charles Sermon, 49, 91
 Hobbs, Miss Emily Elizabeth, 49

Hockley, Albert James, 14
Hockley, Eric J, 14
Hockley, William A, 12, 14
Hodkinson, Edward John, 116
Hoe Place, 32
Holden, Walter, 33
Hollebon, Hilda Dorothy, 76, 115
Holloway, J, 11
Holloway, John, 95
Holly Cottage, 96, 97
Holman, Frederick, 9
Holmes, Frederick, 43
Honora Walton, 128
Honour, Mrs Kathleen Margery, 36
Honour, Tom Lincoln, 36
Hood, E J, 58
Hook Heath, 42
Horsell, 50, 64
Howard, Alice, 116
Howard, Arthur Gregory, 15, 116
Howard, Arthur John, 15
Howard, Charles William, 58
Howard, Edward John, 58, 92
Howard, John, 81
Howell, Brig Arthur Anthony C.M.G, 116
Huggins, Boaz G, 91
Huggins, Mrs Emma, 91
Humphries, Robert Mansfield, 35
Hunt, Walter, 105
Hunter, A G, 102
Hurst, Henry, 92
Hurt, Evelyn, 116
Hutchings, Arthur J, 89
Hutton, William, 42, 43
Hutton's Villas, 43

I

Ikaya, 31, 34, 35
Inkerman Barracks, 32, 37, 74
Inwood, Albert Edward, 41, 50, 51, 117
Inwood, Mrs Mabel, 50, 117
Inwood, Mrs Mabel Thurston, 52
Isaacs, I F, 15
Isle of Skye, 12
Islington, 97
Italian Inspiration, 8
Iverson, William Henry, 92
Ivydene, 28, 31, 34, 35, 38

J

Jackley Wonders, 50
Jackley, George, 50, 52, 117
Jackley, Nathan, 50
Jackman, George, 55, 117, 118
Jackman, James, 22, 35
Jackman, Mary, 21, 41
Jackman, Michael, 48
Jackman, Miss Mary, 40
Jackman, Mrs Ellen Florence, 35
Jackman, Percy, 117

Jackman, Walter H, 95
Jackman, Walter Henry, 118
Jackman, William, 40
Jackman's Nursery, 55
Jackson, Albert, 93, 94, 118
Jackson, David, 52
Jackson, George A, 25
Jackson's Cold Meat Stores, 3
Jeffrey, John Henry, 48
Jeffreys, Minnie Gertrude Ellis, 118
Jelley, Daniel, 50
Jelley, Thomas, 50
Jelly, Daniel, 118
Jelly, Mrs Mabel, 118
Jenks, William Henry, 35
Jennings, Miss Amelia, 4
Jermyn Street, 104
Johnson, Arthur, 11, 12
Johnson, J P, 48
Jones, J O, 106
Jones, John, 80
Jones, Thomas G, 107
Jones, Urban, 10
Jones, William Henry, 107
Jordan, Frederick, 36
Jordan, Mrs Flory M, 104
Jordan, William Henry, 103, 119
Jubilee Cottage, 103
Jung, Princess Shumshere, 72
Jungle, The, 11

K

K A Rylance, 5
K G Hartley Ltd, 42
Keelan-Westall, 6
Keep, The, 100
Keller, Roderick Leopold M.C., 119
Kelly, Thomas George, 22
Kemp, Frederick V, 42
Kent, 2
Kersbrook, 34, 35
Kiely, Henry, 12
Kiln Bridge, 2, 5, 37, 44, 45, 47
Kiln Cottage, 39
Kiln House, 39, 40
Kilnbridge House, 9, 10
Kimber, Alfred, 102, 103, 107
Kimber, Mrs Jane Louise, 102, 103
Kingfield Cottages, 15, 16
Kingham, George Henry, 119
Kingham, George Henry Theodore, 119
Kington Magna, 60
Kinrara, 27
Kitchener Club, 42
Kitchener Comrades' Clubs, 41
Knaphill, 2, 4, 19, 49, 66, 97
Knight, G, 58
Knight, John Alfred, 119
Kohler, Leonard Arthur, 76
Kurn, James George, 119

L

Lacey, Victor A, 30
 Lamb, Francis W, 95
 Laney, Arthur R, 34
 Laney, Denis, 10, 21
 Langley, Matthew J, 93
 Langman, Thomas Brooking, 26
 Lavendar Cottage, 71
 Lay, George T W, 9
 Lay, Mrs Maud A, 10
 Le Chalet, 71, 72, 73, 74
 Ledger, James, 83
 Lee, Joseph, 15
 Lee, Joseph James, 14
 Lee, Mrs Jane, 15
 Legg, John, 91
 Leggett, Burrice William, 89
 Linden Cottage, 95, 96, 97
 Linthorpe, 61
 Lintott, Frank A L, 83
 Lintott, Frederick William, 119
 Lintott, Mrs Doris G, 84
 Lintott, Sidney J, 81, 84
 Little Ellingham, 100
 Little Thurlow, 73
 Loader, Sydney, 14
 Lock, William Absalom, 120
 Lockfield Drive, 18, 19
 Lody, William Thomas, 12
 London, 62, 97, 104, 132, 133
 London & South Western Railway, 87
 London Necropolis & National Mausoleum Company,
 30, 49, 61, 68
 Lotus, 6, 7
 Lowe, Major Thomas M O, 73
 Lower Guildford Road, 97
 Lowfield, 61
 Lucas, Henry, 17
 Lunerva, 61
 Lunn, William Ernest, 25
 Luxton, Doris, 107
 Luxton, Doris F, 107
 Luxton, S, 107
 Lyceum Theatre, 50
Lye Cottage, 101
 Lye Cottages, 79, 80, 81, 82, 83, 84
 Lye End, 80
 Lye End Cottage, 72, 83, 84, 86
 Lye End House, 72, 85, 86, 87
 Lye End Nursery, 72
 Lye View Cottages, 90, 91, 92, 97
 Lynn, Walter, 26
 Lynthorpe, 53
 Lynton, 28, 29, 38

M

MacDonald, John Doran, 120
 MacPherson, John, 92
 Maddox, Evelyn W, 49
 Madoca Furniture, 8

Mahoney, Frederick Charles George, 26
 Mahoney, Mrs Alice, 25, 26
 Majestra, 30
 Malvern, 53, 54
 Manning, Bernard, 53
 Manor Way, 97
 Mansell, Andrew, 96
 Mant, Alfred, 107
 Marchant, Robert H, 54
 Marden, 20, 21
 Marriott, William Kenaz, 120
 Marshall, Mary, 84
 Martin, A E, 58
 Marton, 72, 76
 Martyr, Joseph, 47, 120
 Martyr's Cottages, 45, 47, 48
 Masters, Edward Godfrey, 86
 Mathis, Ernest F, 79
 Mathis, Mrs Eliza, 79
 Mathis, Mrs Violet E, 79
 Matthews, Colin, 29
 Matthews, James, 80, 81
 Matthews, James Edwin, 81
 Matthews, Mrs E M, 81
 Matthews, Robert, 107
 Matthews, William, 49
 May Cottage, 102, 103
 May, Betty, 73
 May, Edward C, 107
 May, Ellen, 25
 May, George Edgar, 25, 120
 May, Marjorie E, 25
 May, Mrs Louisa Ethel, 120
 May, William Arthur, 120
 Maybury Road, 64
 Maybury Spray Painting & Cellulosing Co., 5
 Maycock, Maria, 121
 Mayer, Henry, 3
 Mayes, Henry, 16
 Maynard, K, 43
 McDonald, Edna M, 24
 McDonnell, Frederick Oswald, 120
 McGavin, P, 33
 McGonagle, Edward Joseph, 76
 McGonagle, Mrs Rose, 76
 McGonagle, Patrick, 76
 McLaurin, Thomas A, 79
 McLeod, Roderick George, 120
 Mead, Charles John Albert, 121
 Mears, R A, 83
 Melita Villa, 60, 61
 Melville Brothers, 50
 Mephram, Arthur F, 3
 MERITyre, 46, 47
 Merlin, 61, 62
 Mersh, William, 53
 Mervyn Instruments Ltd, 59, 64
 Mervyn Sound & Vision Co. Ltd, 59, 62
 Methven, Arthur Edward, 45, 46, 47
 Middlesex, 107
 Miller, George, 88
 Miller, James, 48

Mills Garage, 4, 5
 Mills, Christopher E, 43
 Mills, Cyril, 20, 21
 Mills, Frank William, 3, 4, 5, 38, 45
 Mills, Miss Millie, 4
 Mills, The Misses, 3, 4
 Miniature Electronic Components Limited, 97
 Miniature Electronic Components Limited, 60, 65, 98
 Ministry of Works, 65
 Mitchell, David Stuart, 121
 Moir, John, 17
 Molyneux, John, 92
 Molyneux, Mrs Grace Froud, 25
 Monin, Hilda H, 48
 Moody, Philip C, 14
 Moore, Mr, 33
 Moore, Mrs Lily, 121
 Moore, Owen Ernest, 121
 Morgan, James, 26
 Morley, Marmaduke Robert Hood, 121
 Mortimer, William, 11
 Moses, James, 83
 Moto-Bitz, 7
 Moulding, Henry, 11, 35, 97, 104, 105
 Moulding, Walter William, 121
 Mount, J, 33
 Mount, Michael V, 33
 Mount, The, 74
 Munds, Elizabeth, 43
 Munds, John, 43
 Munds, Mrs Elizabeth, 42

N

National Graphical Association, 5
 Nepal, 72
 Nevile, Marjorie Evelyn, 122
 Newey, Samuel, 79, 81
 Newman, Edgar, 91
 Newman, Edward, 90
 Newman, George, 35
 Nicholls, I K, 38
 Nicholls, Lillian, 52
 Nicholls, Ron, 52
 NJK Interiors, 6
 Norfolk Gardens, 20, 21
 Norfolk House, 20, 21, 57
 Norfolk, Cynthia Irene, 122
 Norley Cottage, 26
 Norley Cottages, 25, 26
 Norley Villas, 25, 26
 Normandy Park, 2, 9
 Northcott, George E C, 94
 Norton, John, 25, 26
 Not Just Kitchen Ideas, 6
 Nursery Cottages, 83, 84
 Nutter, Thomas, 89
 Nyasa, 22, 23
 Nyaso, 22

O

O'Rourke, Alice, 82
 Oak Cottage, 16, 17
 Old Hayloft, The, 73
 Old Woking, 97
 Oliphant, Revd Frederick James, 32, 122
 Oliver Cox Ltd, 46, 47
 Onslow, Earl of, 39
 Orchard Nursery, 55, 56
 Ordnance Survey, 132
 Ormlie, 108
 Orr, David, 16
 Overmass, Mrs Sarah Ellen, 26, 35

P

Packer, Glen D, 43
 Pafford, George, 14
 Page, James, 76
 Palmer, T A G, 89
 Pamphilon, Frederick, 16
 Pannel, T, 12
 Pannell, Stephen, 122
 Parker, Robert, 9
 Parker, Thomas, 9
 Pask, Albert T, 49
 Peacock, Kenneth Reginald, 52
 Peacock, William, 43
 Pearce, Annie M, 83
 Pearce, Francis Attwooll, 26
 Pearce, Henry, 80
 Pears, Andrew, 122
 Peatman, Thomas A, 43
 Peel, John, 35
 Pegg, Robert W, 23
 Pegman, James T, 83
 Penley, William Sydney, 122
 Penny, William Byers, 17
 Percival, Stanley, 122
 Percy, David, 40
 Pet Doctors, 38
 Peterkin, Maria J, 42
 Petrie, D W, 54
 Pezaro, P D, 33
 Phayre, Col. R, 32
 Piesse, Ernest William, 12, 122
 Piesse, Mrs Susan, 122
 Pike, Meshack, 105
 Pilbeam, H R, 48
 Pine Cottage, 29
 Pines, The, 29, 30
 Pinner, George J, 54
Pirbright Camp, 45
 Pitt, Ronald V, 83
 Pitts, Derek, 25
 Pitts, Samuel H, 89
 Platter, H B, 91
 Player, John, 3
 Playfoot, J, 17
 Pole, Miss Rose Beatrice, 71, 72, 73, 76, 84, 86
 Pond, Ida, 32

Pond, Miss Annie Oriana Ruthven, 32, 33
 Poppy Cottage, 94
 Potter, Florence H, 26
 Poulter, Mrs Ellen F, 81
 Poulter, William John, 81
 Povey, James, 58
 Powell, Michael, 101
 Powney, Joshua W, 29
 Preece, Edgar William, 38
 Prince Hill, 37
 Prince Hill Stores, 46, 47
 Prince of Wales, 49, 50
 Prince of Wales Inn, 30, 37, 44, 47, 49, 50, 51, 52, 61
Prince of Wales Tavern, 50
 Princes Hill Cottages, 43
 Princess Victoria Louise Sophia Augusta Amelia
 Helena, 74
 Prior, George, 14, 33
 Prison Path, 19, 30, 31
 Prout, George, 91
 Providence Street, 85
 public convenience, 77
 Publicover, Peter D, 25
 Pudney, Edward, 23, 38, 123
 Pudney, Mrs Elizabeth Mary, 23, 24, 123
 Pullen, Barry J, 81
 Pullen, C R, 81
 Pullen, William, 97

Q

Queen Victoria, 42
Queen's Head, Byfleet, 52
Queen's Head, Knaphill, 50
 Quinlan, A J, 33

R

Raeburn, Sir William H, 123
 Raeburn, Sir William Norman Bart, 74
 Railway Cottage, 87
 Railway Cottages, 87, 88, 89, 90
 Rainbow, A, 58
 Rainbow, Arthur Ernest, 35
 Rainbow, Ernest F, 88
 Randall, George Harold, 22, 35, 54
 Randall, Leslie R, 48
 Randall, William H, 54
 Randolph, Mrs Mary, 105
 Ranger, P C, 8
 Ranns, Agnes S, 91
 Raphael, 73
 Rathbone, Arthur, 123
 Ravenswood, 53
 Reader, George J, 94
 Reader, George James, 104
 Reading, 66
 Redway Cottages, 78, 79, 80, 82
 Redway, Charles, 17, 80, 95, 123
 Redway, Charles A, 97
 Redway, Henry, 123
 Redway, Joseph, 123

Redway, Peter A, 80
 Redway, Philip, 123
 Reed, John A, 81, 84
Regency Directory of Woking, 5
 Reid, Miss Charlotte Stuart, 23
 Rendel, George, 34
 Renshaw, Arthur James, 14
 Renshaw, Charles, 12, 123
 Renshaw, John Charles, 61, 107
 Renshaw, Sidney Charles, 53
 Renshaw, Sydney Charles, 53, 61
 Renshaw, William, 9
 Richards, Albert M, 12, 54
 Ring-a-Roses, 6, 7
 Ripley, 133
 Roberts, James, 41
 Robin Hood Close, 42
 Robin Hood Road, 1, 3, 4, 37, 38, 39, 48, 49, 52, 56, 57,
 61, 65, 71
 Robinson, Miss, 86
 Robinson, Miss Lottie, 71, 72
 Rogers, Mrs Rhoda, 123
 Rogers, Rennie Ross, 123
 Romford, 17
 Rookley, John, 125
 Rose, Herbert H P, 106
 Rose, Mrs Mary Ann, 35
 Rose, William, 97
 Roshier, George, 17
 Rousseau, Annie, 36
 Rousseau, William Louis Edward, 34
 Rowan Property Company Ltd, 66, 67
 Royal West Surrey Regiment, 19
 Roydon, 76
 Russell, Michael F, 83
 Russell, William, 84

S

Salter, Thomas, 30, 31, 49, 50, 51
 Salter's Cottages, 30, 31, 32, 33, 34, 35
 Sandeman, Lionel Fraser, 41, 42
 Sandland, Thomas, 43
 Sandon, George, 107
 Sandon, Mrs Charlotte, 107
 Saulsters, William, 16
 Saunders, George, 91
 Savage, Emily, 124
 Savage, Frederick, 20, 21, 124
 Savage, George Bellas, 25, 71, 72, 73, 76, 124
 Savage, Jane, 124
 Savage, Job, 20, 21, 57, 124
 Savage, Miss Beatrix Annie, 72, 73, 74
 Savage, Mrs Jane, 57
 Savage, Mrs Rosina, 41, 71, 73, 74, 124
 Savage, Rosa, 124
 Schleswig-Holstein, 74
 Scobie-Trumpers, P M, 33
 Scotland, 23
 Scott, Robert, 76
 Seadon, William James, 46
 Searle, George Barker, 125, 126

Sears, John Humphrey, 86
 Sellwell, 80
 Selsby, George, 11
 Senior Officers' School, 25
 Senior, Lt Col Victor James, 73
 Senior, Maj Victor James M.C., 125
 Sexton, Thomas G, 81
 Shaldon House, 34, 35
 Sharp, John Moverly, 104
 Sheilds, Norman, 25
 Shepherd, Walter Horace, 23
 Sherman, William H, 58
 Sherwin, Charles, 82
 Sherwin, Percy, 30
 Shrubsole, Ashton J C, 57, 58
 Shrubsole, Henry, 58
 Shurven, Charles P, 81
 Shurven, Charles Richard, 93
 Sim, Walter, 43
 Simmonds, Catherine Miriam, 124
 Skeffington, Dr Paul, 16
 Skelton, Herbert, 126
 Skilling, Albert Ernest, 91, 94
 Skinner, John, 88
 Skinner, Mrs Mary J, 88
 Skipper, Leonard, 91
 Sleigh, Frederick Campbell, 52
 Slocock, Walter Ashley, 26
 Slocock, Walter Charles, 25, 126
 Slocombe, Alfred E, 25
 Small, Edwin, 61
 Smellie, William Buchanan, 126
 Smith, Alfred, 80
 Smith, Arthur, 80, 82
 Smith, Ebenezer, 9
 Smith, Eleanor H, 80
 Smith, Eleanor M, 80
 Smith, Ernest W, 3
 Smith, George, 55
 Smith, H W, 106
 Smith, John, 14, 83
 Smith, Leonard W, 80
 Smith, Mr, 31, 32
 Smith, Richard Drewitt, 23
 Smith, Samuel, 81, 83, 86
 Smith, Samuel John, 41
 Smith, Trevor R, 80
 Smith, William, 92
 Smithers, Alfred, 80
 Smithers, Edward J, 14
 Smithers, Ethelbert, 126
 Smithers, Mrs Elspeth, 126
 Smithers, William, 9
 Snelling, Reginald G, 53
 South Close, 78, 79
 South Cottage, 78, 79, 84
 Sparke, Henry William, 21
 Spicer, Fred S, 92
 Spooner, Edward Stephen, 125
 Spooner, Emily, 127
 Spooner, Harry, 76, 126, 127
 Spooner, Mrs Emily, 71, 126
 Spooner, Mrs Mary Elizabeth, 126
 Spooner, Samuel, 88
 Spooner, Stephen, 16, 48, 70, 71, 126, 127
 Spooner, William, 88
 Spooner, William James, 16
 St Agnes, 61, 62
 St James' House, 122
 St John the Baptist church, 68
 St John's, 74
 St John's and District Working Men's Club, 42, 65, 66
 St John's Bakery, 2, 3
 St John's Cottage, 12, 13
 St John's Cricket Club, 69
 St John's Football Club, 69, 129, 130, 131
 St John's Garage, 4, 37, 38
 St John's Green, 44, 45
 St John's Hill Road, 13, 24, 74
 St John's Lye, 1, 11, 68, 69, 70, 71, 72, 85, 97, 98
 St John's Men's Club & Institute, 66
 St John's Poultry Farm, 4
 St John's Road, 37, 98
St John's School, 13, 24
 St John's Lye, 75, 77, 79
 St John's Memorial Hall, 73, 74, 75
 St John's Products Ltd, 97, 98
 St John's Surgery, 38
 St John's Village Society, 75
 St Johns Waterside, 59, 64
 Stables, Harold Rolleston, 127
 Stacey, William, 9
 Staffordshire, 49
 Standing, Peter J, 54
 Stanley Villa, 31, 34, 35
 Stanley, George William, 12
 Stedman, Alfred J, 58
 Steele, William, 57
 Stent, Stanley R J, 93
 Stent, Thomas, 11
 Steteca, 30
 Stevens, 106
 Stevens, Caleb, 127
 Stevens, M M J, 95
 Stevens, Maurice R, 95
 Stevens, Miss Maria, 111
 Stevens, Mrs Fanny Ellen, 20, 21
 Stevens, Robert, 20, 21
 Stimpson, Mrs Mary Ann, 25
 Stimpson, Sgt George William, 25
 Stoke D'Abernon, 4
 Stoker, Joseph, 71
 Stokes, Joseph John, 73
 Stokes, William, 12
 Storrs, Revd A Harold, 22
 Stoughton, 87
 Street, Charles Shoesmith, 22, 23
 Strudwick, George, 102
 Strudwick, George William, 23
 Strudwick, Henry, 95
 Strudwick, Miss Edith Lottie, 102
 Strudwick, Miss Florence, 102
 Strudwick, Mrs Betsy, 102
 Strudwick, William, 41

Styer, W B, 43
 Sultan, Charmaine M, 58
 Sultan, M, 58
 Sunderland, 60, 65
 Sunny Bank, 57, 58
 Sunnyside, 101
 Suntana, 8
 Surrey County Asylum, 20
 Surrey History Centre, 132
 Sussex, 40
 Sutherland, George Ernest William, 105
 Swallow, William, 12

T

Tally Ho, 100
 Tarrant, Mrs Daisy K, 33
 Taunton, Thomas, 49, 50
 Taylor, Marianne, 33
 Taylor, Paul G, 16
 Telfer, Eric C, 57
 Temple, Miss Emma Amelia, 113, 114
 The Bungalow, 55
 The Gables, 72
 Thirlmere, 28, 38
 Thomas, Madge, 54
 Thomas, Mrs Jennie, 9, 104
 Thompson, Sir Henry, 127
 Thorn Cottage, 103
 Thorn, George, 106
 Thornash Road, 64
 Thorndene, 103
 Thorne Cottages, 103, 104
 Thorp, William J, 14
 Thorpe Lodge, 17
 Tillman, George Frederick, 104
 Tilly, Stephen, 47
 Tolnhurst, Frederick W, 84
 Tomlin, E, 7
 Townsend, John Russell, 128
 Toynton, Clement, 41
 Trelye, 108
 Trigg, Mr, 33
 Trigg, Mrs, 32, 33
 Trowbridge, Arthur C, 41
 Trowbridge, Jonathen A, 41
 Tsavo, 34, 35
 Tuck, T B, 52
 Turnbull, Hubert Maitland, 127
 Turnbull, Nicholas S, 92
 Turner, Henry, 94
 Turner, John, 25
 Turner, Joseph, 16
 Tutty, Edward Samuel, 92
 Tyerman, Harry, 106
 Tyler, Henry, 2
 Tyler, Mrs Sarah, 2
 Tyningham, 22, 23, 24
 Tyrrell, Raymond P, 91

U

Uncle Tom's Cabin, 46, 47
 Underwood, Henry, 80
 Underwood, William, 2
 United States, 50

V

Valdo brothers, 128
 Valdo Brothers, 127
 Valdo the Clown, 38
 Van Reysen, P F F, 101
 Vanity House, 99
 Vansittart, Col Eden D.S.O., 128
 Veness, Thomas, 2
 Veness, Thomas George, 2
 Victoria Orchard, 55, 56
 Vidler, Richard David, 43
 Villiers, Miss Edith, 42
 Vincent, Stimshlane, 82

W

Walker, John, 14
 Walker, Mrs Esther, 14
 Walker's Cottages, 14
 Wall, William Archibald, 12
 Wallace, Joseph, 33, 34
 Wallace, Mrs Julia, 34
 Wanstall, Edward, 48
 War Office, 19
 Ward, Thomas A, 21
 Warrell-Bowring, Walter John, 128
 Warren, Frank H, 88
 Warwick Lane, 100, 102, 106
 Warwick Lodge, 104, 105, 108
 Waterer, George, 37, 38
 Waterer, Miss Maria, 128
 Waterer, Mrs Maria, 111
 Waters, G R, 9
 Watson, Grant, 54
 Wayte, James D, 106
 Wayteover, 108
 Webb, Frederick George, 48
 Webb, Michael R, 41, 91
 Webster, John Charles, 30
 Webster, William Frederick Reed, 128
 Weedon, Edith M, 91
 Welcome Cottage, 94, 97
 Welcome, The, 94
 Weller, Albert John, 107
 Weller, William, 29, 30, 34
 Weller, William H, 48
 Wells, Dennis A, 26
 Wells, James, 48
 Wells, Mrs Mary Ann, 61
 Welman, Joseph, 9
 Welman's Villas, 9
 West Byfleet, 72
 West, Albert E, 88
 West, Eliza, 88

West, Mrs Ellen, 88
 West, Thomas, 69, 70, 88
 Westfield, 71
 Weston, J P, 12
 Weston, John Michael, 15
 Weston, V D, 25
 Wheeler, Alfred H W, 81
 White, C F, 28
 White, George, 33, 41, 42
 White, James Henry, 88
 White, Mrs Sarah, 30
 Wickens, William, 51
 Wickes, 4
 Wilkie, June Stuart Fleming, 128
 Williams, William H, 17
 Willis, Thomas, 33
 Willoughby, Maj Gen Michael Edward C.M.G C.B. C.S.I.,
 128
 Willoughby, William Henry, 89
 Wilson, James A, 104
 Wilson, Julianna, 17
 Wilson, Mrs Frances H, 43
 Windsor, B, 53
 Windsor, Ernest John, 12
 Winslade, Richard J H, 52
 Woking, 1, 4, 32, 38, 39, 42, 49, 60, 64, 65, 66, 68, 71,
 72, 74, 85, 92, 107, 133
 Woking Borough Council, 75
 Woking Crematorium, 72
 Woking Female Convict Prison, 19, 29, 31, 34
 Woking Golf Club, 87
 Woking Invalid Convict Prison, 2, 12, 16, 19, 20, 30
 Woking Print, 98
 Woking Railway Station, 19
 Woking Soldiers' Home, 32, 33
 Woking Urban District Council, 60, 69, 77
 Wolverhampton, 49
 Wood, Henry, 15, 16
 Wood's Terrace, 15, 16, 17
 Wooden Spoon, 5
 Woods, Augustus R, 92

Woods, Augustus Raymond, 11
 Woods, Katherine N, 10
 Woods, Violet M, 92
 Woodside, 26, 27
 Woolley, John, 85, 86
 Woolnough, Wallace, 34
 Woosley, Robert J, 29
 Worcestershire, 4
 Worplesdon, 2, 9, 98
 Wrattton, Mrs E A, 30
 Wye, George, 82
 Wye, J, 80
 Wye, John, 105
 Wye, Miss Lizzie M, 83
 Wye, Thomas R, 82

Y

Y.M.C.A., 32, 74
 Yeatman, Alice, 116
 Yeo, William, 32
 Young, 32, 81
 Young Men's Christian Association, 74
 Young, Andrew, 57, 58
 Young, Arthur, 57, 58
 Young, Arthur Andrew, 57, 58
 Young, Beatrice, 61
 Young, Charles Edwin, 86
 Young, Ernest Ewart, 88
 Young, Leslie, 61
 Young, Miss Isabella, 57
 Young, Mrs Annie Theresa, 57
 Young, Philip K, 101
 Ypres, 103

Z

Zambra, Marcus Warren, 129
 Zambra, Marcus William, 129